



Pacific Southwest Aviation Information Bulletin



No. IB 2015-01

January 30, 2015

Subject: Pacific Southwest 2015 Initial Attack Air-to-Ground and
2015 FM Air Tactics Allocations

Distribution: All Aviation Users

Issue: The Regional Frequency Manager has issued new FM Air Tactics Frequencies for the following Forests; Six Rivers, Klamath, Lake Tahoe Basin, Stanislaus, Sierra, Sequoia, Angeles, San Bernardino, and the Cleveland.

Solution: The Pacific Southwest Regional Aviation Group (RAG) collaborated with the Regional Frequency Manager to ensure that Air Operations SAFETY and Efficiency would not be compromised because of the new changes.

The RAG and Regional Frequency Manager developed this Information Bulletin to ensure all are aware of the changes that will go into effective April 1st, 2015.

Key Talking Points:

2015 Pacific Southwest Initial Attack Air-to-Ground frequencies and naming convention have not changed.

2015 Pacific Southwest new FM Air Tactics frequency will be effective on April 1, 2015.

- FM Air Tactics Frequencies/name changes for the Six Rivers, Klamath, Lake Tahoe Basin, Stanislaus, Sierra, Sequoia, Angeles, San Bernardino and the Cleveland.

2015 Pacific Southwest Region Air Tactics frequency allocation and maps are attached.

This [Information Bulletin](#) should be given wide distribution.

ftp://ftp.nifc.gov/Incident_Specific_Data/CALIF_N/z_Aviation/2015-1_IB_Air_Ground_FM_Air_Tactics_Final.pdf
OR ftp://ftp.nifc.gov/Incident_Specific_Data/CALIF_S/z_Aviation/2015-1_IB_Air_Ground_FM_Air_Tactics_Final.pdf



/s/ Pete Duncan
PETE DUNCAN

Regional Fire Operations
Risk Management

/s/ Yolanda R. Saldana
YOLANDA R. SALDANA

Regional Aviation Safety Manager

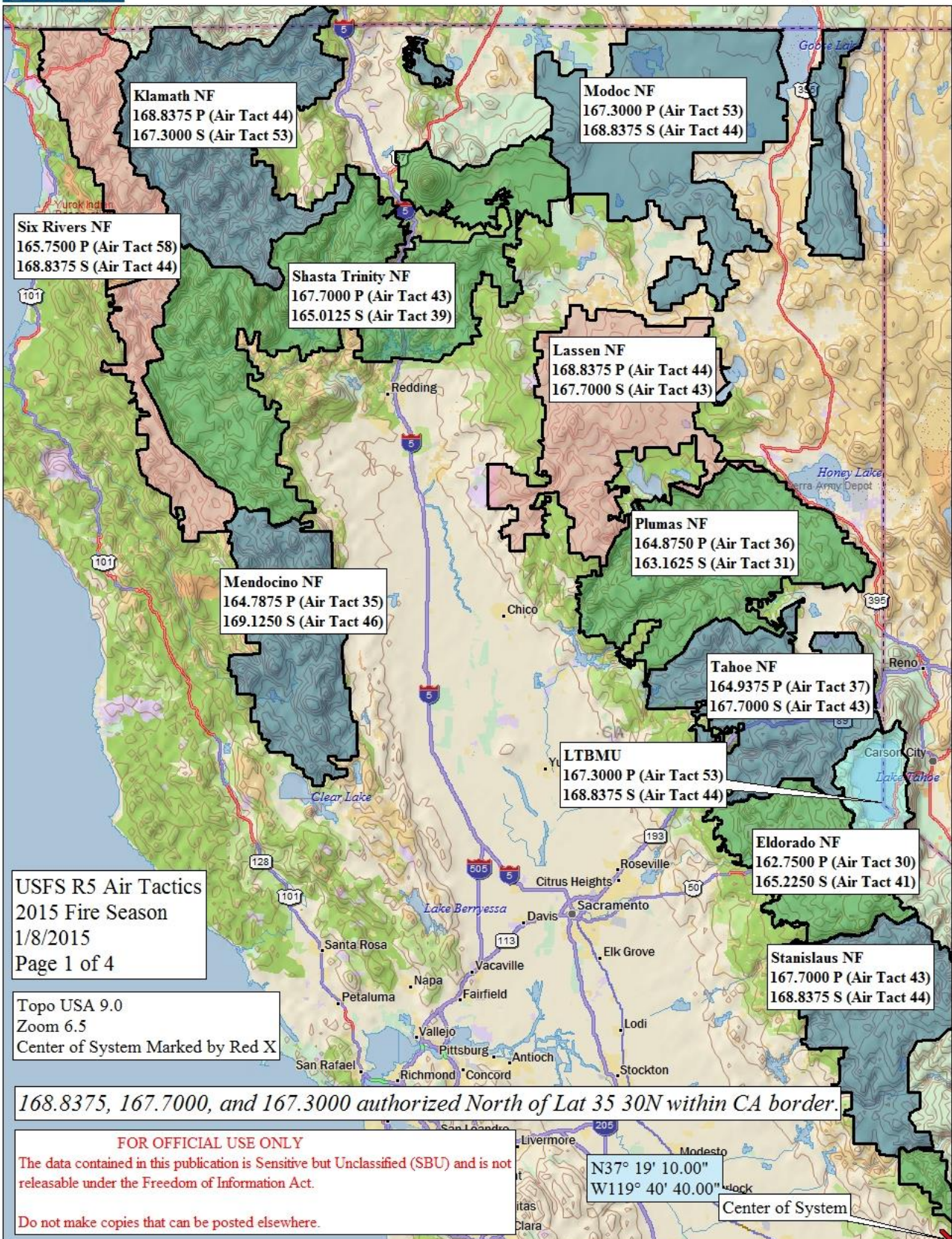
2015 Pacific Southwest Region Initial Attack Air-to-Ground “NO CHANGES”

<u>Zone Name</u>	<u>Frequency Number</u>	<u>Frequency Name</u>
CA01 P	167.6000	AG-43
CA01 S	166.8750	AG-08
CA02 P	167.5000	AG-14
CA02 S	169.1125	AG-59
CA03 P	167.4750	AG-41
CA03 S	168.6375	AG-24
CA04 P	169.1125	AG-59
CA04 S	168.4875	AG-53

2015 FM Air Tactics Frequency Allocations

<u>Forest Name</u>	<u>Frequency Name</u>	<u>Frequency Number</u>	<u>Frequency Allocation</u>
Angeles N. F.	Air Tact 36 (NEW)	164.8750	Angeles Primary
	Air Tact 60 (NEW)	173.7750	Angeles Secondary
	Air Tact 55 (NEW)	168.3875	Angeles Tertiary
Cleveland N.F.	Air Tact 56 (NEW)	164.8000	Cleveland Primary
	Air Tact 59 (NEW)	171.1375	Cleveland Secondary
	Air Tact 34 (NEW)	164.5000	Cleveland Tertiary
Eldorado N.F.	Air Tact 30	162.7500	Eldorado Primary
	Air Tact 41	165.2250	Eldorado Secondary
Inyo N.F.	Air Tact 46	169.1250	Inyo Primary
	Air Tact 44	168.8375	Inyo Secondary
Klamath N.F.	Air Tact 44 (NEW)	168.8375	Klamath Primary
	Air Tact 53 (NEW)	167.3000	Klamath Secondary
Lake Tahoe Basin M.U.	Air Tact 53 (NEW)	167.3000	Lake Tahoe Basin Primary
	Air Tact 44 (NEW)	168.8375	Lake Tahoe Basin Secondary
Lassen N.F.	Air Tact 44	168.8375	Lassen Primary
	Air Tact 43	167.7000	Lassen Secondary
Los Padres N.F.	Air Tact 54	168.3125	Los Padres Primary
	Air Tact 47	169.1750	Los Padres Secondary
Mendocino N.F.	Air Tact 35	164.7875	Mendocino Primary
	Air Tact 46	169.1250	Mendocino Secondary
Modoc N.F.	Air Tact 53	167.3000	Modoc Primary
	Air Tact 44	168.8375	Modoc Secondary
Plumas N.F.	Air Tact 36	164.8750	Plumas Primary
	Air Tact 31	163.1625	Plumas Secondary

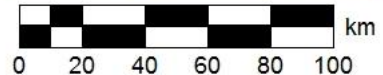
San Bernardino N.F.	Air Tact 33 (NEW)	164.1375	San Bernardino Primary
	Air Tact 46 (NEW)	169.1250	San Bernardino Secondary
Sequoia N.F.	Air Tact 57 (NEW)	165.7000	Sequoia Primary
	Air Tact 43	167.7000	Sequoia Secondary
Shasta Trinity N.F.	Air Tact 43	167.7000	Shasta-Trinity Primary
	Air Tact 39	165.0125	Shasta-Trinity Secondary
Sierra N.F.	Air Tact 53 (NEW)	167.3000	Sierra Primary
	Air Tact 35 (NEW)	164.7875	Sierra Secondary
Six Rivers N.F.	Air Tact 58 (NEW)	165.7500	Six Rivers Primary
	Air Tact 44 (NEW)	168.8375	Six Rivers Secondary
Stanislaus N.F.	Air Tact 43 (NEW)	167.7000	Stanislaus Primary
	Air Tact 44 (NEW)	168.8375	Stanislaus Secondary
Tahoe N.F.	Air Tact 37	164.9375	Tahoe Primary
	Air Tact 43	167.7000	Tahoe Secondary



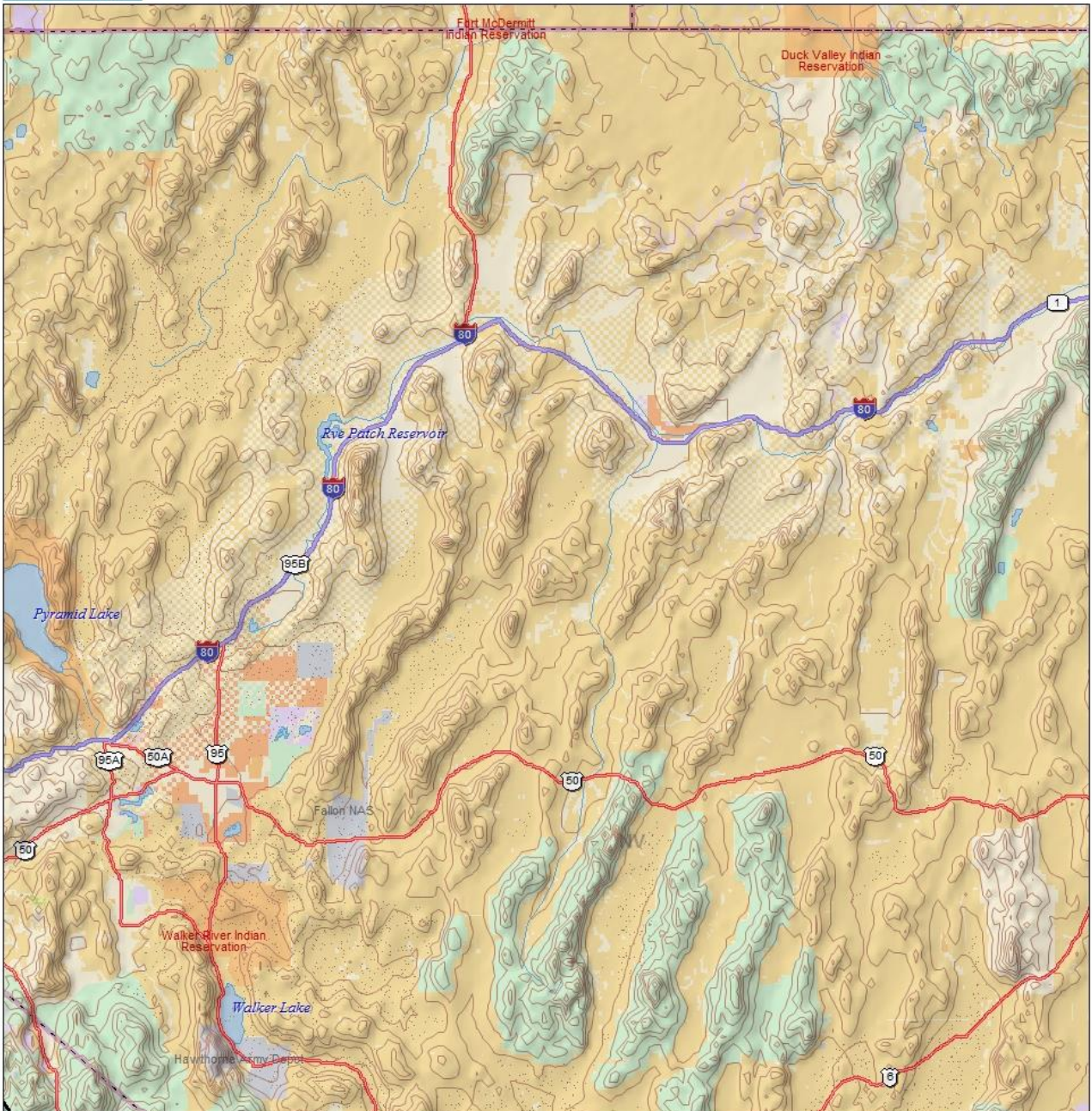
Data use subject to license.

© DeLorme. Topo North America™ 9.

www.delorme.com



Data Zoom 6-5



168.8375, 167.7000, and 167.3000 authorized North of Lat 35 30N within CA border.

Inyo NF
 169.1250 P (Air Tact 46)
 168.8375 S (Air Tact 44)

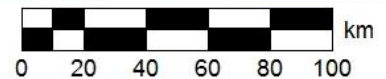
USFS R5 Air Tactics
 2015 Fire Season
 1/8/2015
 Page 2 of 4

FOR OFFICIAL USE ONLY
 The data contained in this publication is Sensitive but Unclassified (SBU) and is not releasable under the Freedom of Information Act.
 Do not make copies that can be posted elsewhere.

Data use subject to license.

© DeLorme. Topo North America™ 9.

www.delorme.com



Data Zoom 6-5

FOR OFFICIAL USE ONLY
 The data contained in this publication is Sensitive but Unclassified (SBU) and is not
 releasable under the Freedom of Information Act.
 Do not make copies that can be posted elsewhere.

USFS R5 Air Tactics
 2015 Fire Season
 1/8/2015
 Page 3 of 4

Los Padres NF
 168.3125 P (Air Tact 54)
 169.1750 S (Air Tact 47)

168.8375, 167.7000, and 167.3000 authorized North of Lat 35 30N within CA border.

166.9875 authorized South of Lat 35 30N within CA border.

Los Padres NF
 168.3125 P (Air Tact 54)
 169.1750 S (Air Tact 47)

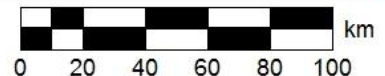
Data use subject to license.

© DeLorme. Topo North America™ 9.

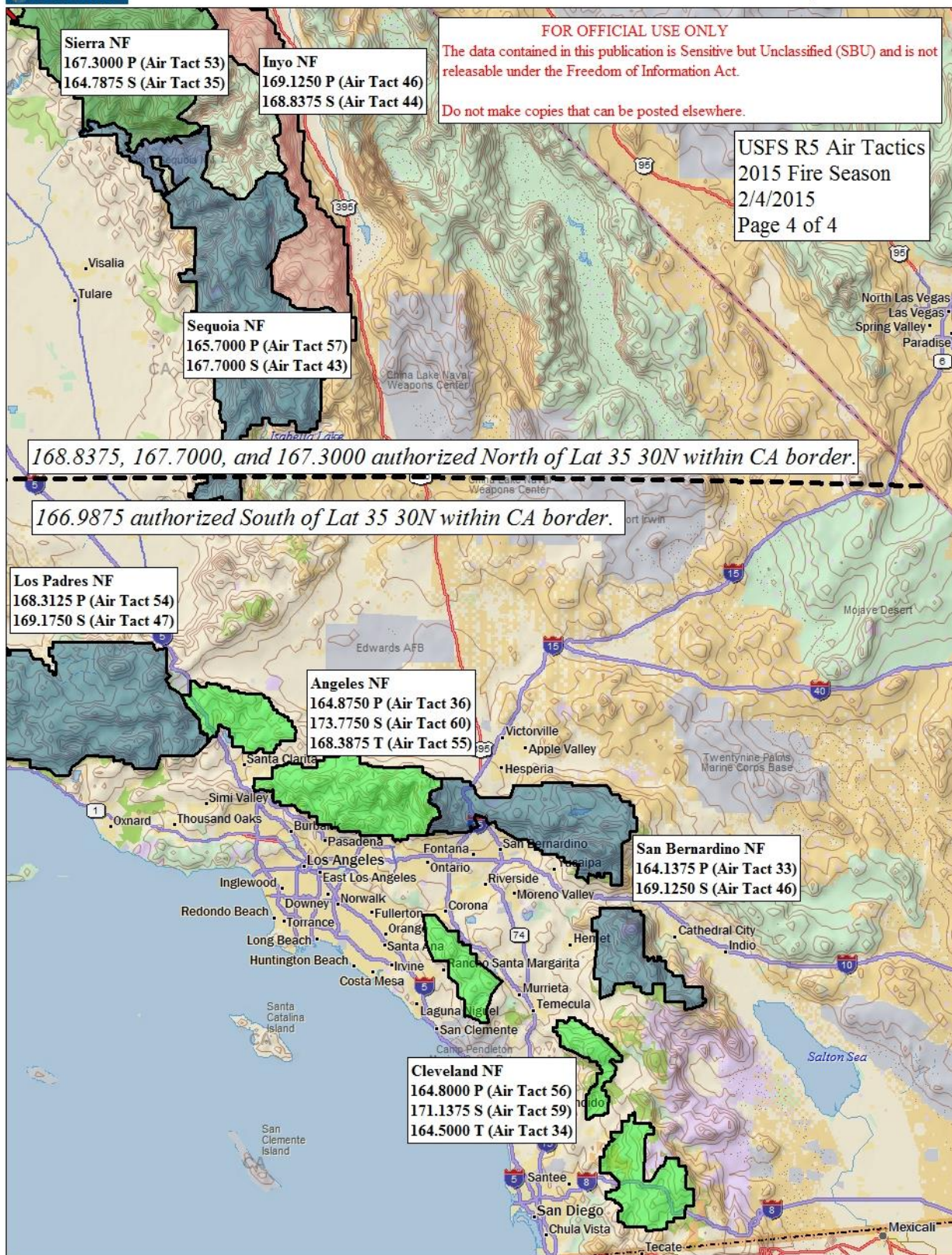
www.delorme.com



MN (13.1° E)



Data Zoom 6-5



Data use subject to license.

© DeLorme. Topo North America™ 9.

www.delorme.com

