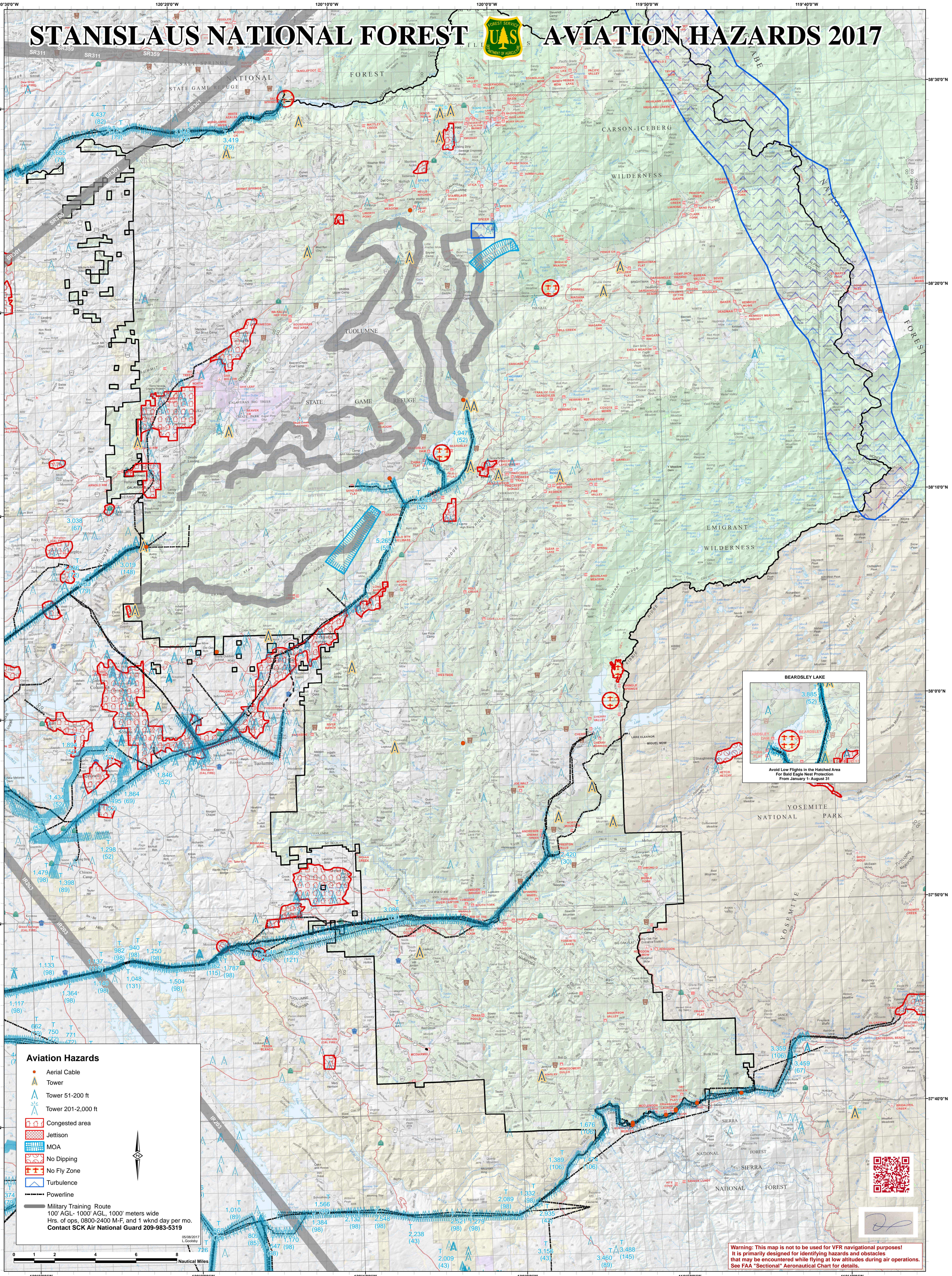


STANISLAUS NATIONAL FOREST AVIATION HAZARDS 2017



BEARDSLEY LAKE

Avoid Low Flights in the Hatched Area
For Bald Eagle Nest Protection
From January 1-August 31

Aviation Hazards

- Aerial Cable
- Tower
- Tower 51-200 ft
- Tower 201-2,000 ft
- Congested area
- Jettison
- MOA
- No Dipping
- No Fly Zone
- Turbulence
- Powerline
- Military Training Route
100' AGL - 1000' AGL, 1000' meters wide
Hrs. of ops. 0800-2400 M-F and 1 wknd day per mo.
Contact SCK Air National Guard 209-983-5319

05/08/2017
L. Coakley



Warning: This map is not to be used for VFR navigational purposes!
It is primarily designed for identifying hazards and obstacles
that may be encountered while flying at low altitudes during air operations.
See FAA "Sectional" Aeronautical Chart for details.