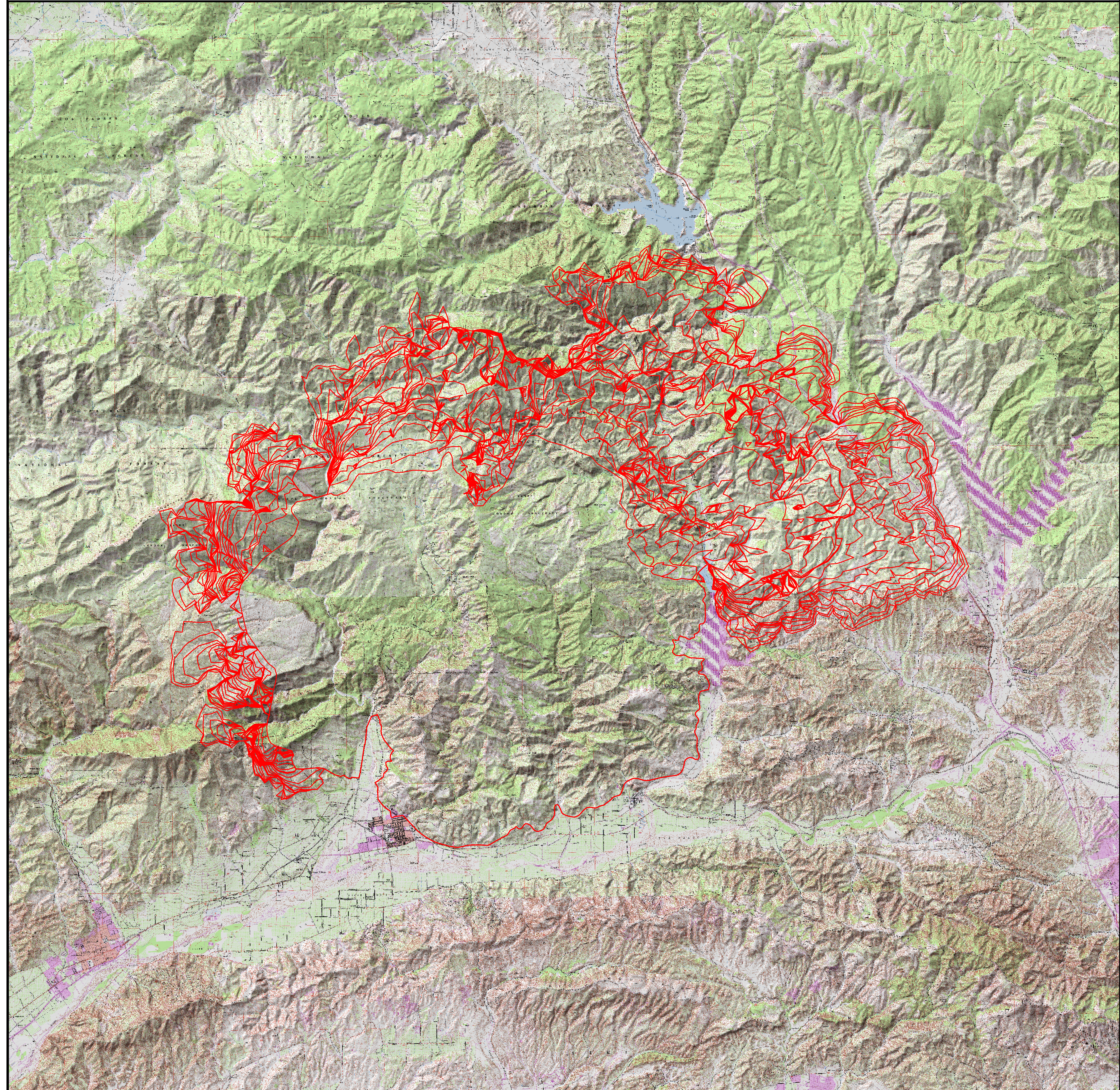



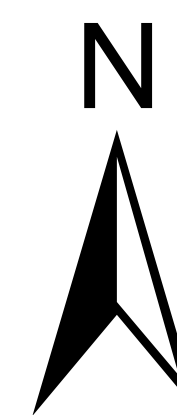
# PIRU 3 DAY PROJECTION 10/30-11/02



Fire Size start 70,000  
Fire Size end 150,000  
Simulation conditions  
NO RAIN  
RH Low 31%  
RH High 86%  
Temp Low 40 deg  
Temp High 75 deg  
Wind Speed 7-12 mph S,SW,W  
Wind Gust 20 mph SW  
Burning Period 1200hrs-2000hrs  
90 meter cell

## Legend

 Two hour time stamp



Miles

