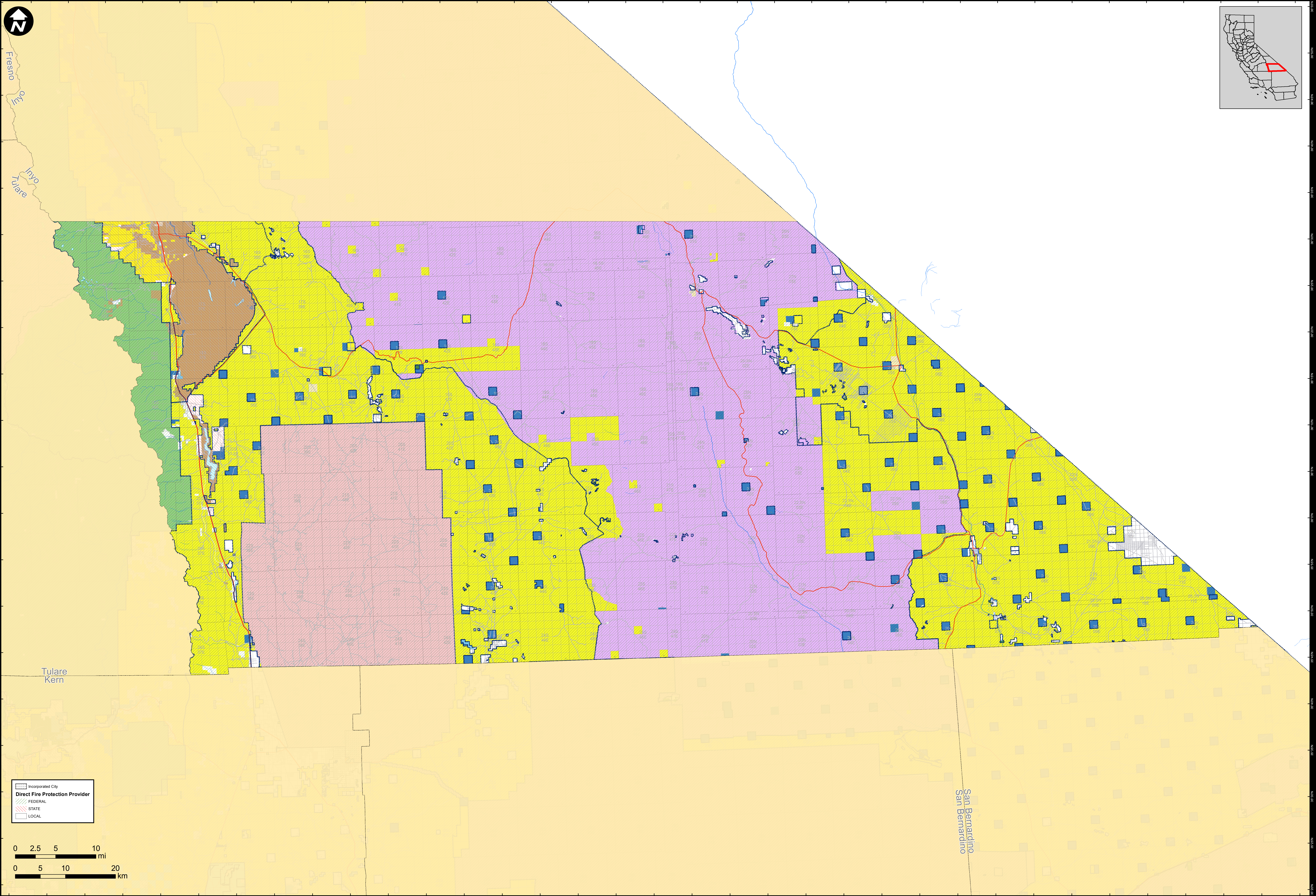
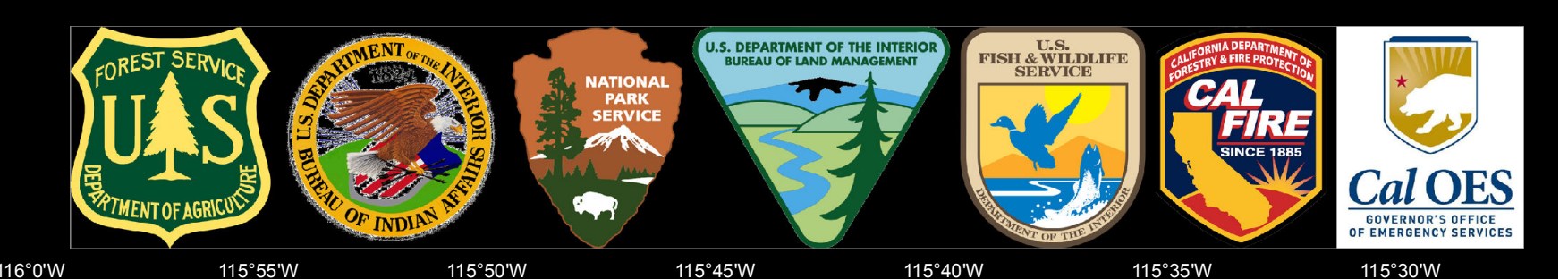


# DIRECT PROTECTION AREAS for WILDLAND FIRE PROTECTION

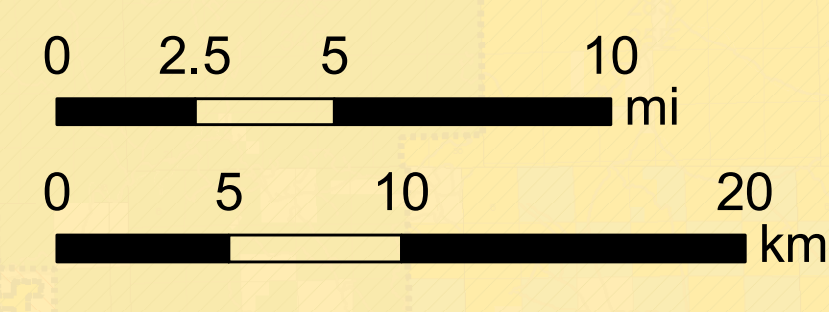
Produced for the California Wildfire Coordinating Group



**Incorporated City**

**Direct Fire Protection Provider**

- FEDERAL
- STATE
- LOCAL



# INYO COUNTY SOUTH

Data Sources:  
Direct Protection Areas (DirectProtectionAreas\_23\_2)  
Land Ownership (Ownership\_23\_1)  
Incorporated Cities (Incorp\_23\_1)

DPA2023\_CountyMaps\_ArchE\_land\_5/9/2023  
NAD 1983 California Teale Albers

**DIRECT PROTECTION AREA**  
That area which, by law or pursuant to the terms of a cooperative agreement, is provided wildland fire protection by the State, Local or Federal Agencies. Direct protection areas may include a mixture of State, Federal, and Local responsibility areas.

This map was produced by the USFS Region 5 Fire and Aviation Geospatial Program. GIS data and product accuracy may vary. The Forest Service reserves the right to update, modify, or replace any or all of this data without notifying the users. The most current version of DPA can be found at: <https://gacc.nifc.gov/osco/cwcc/gis/>