
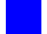




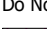

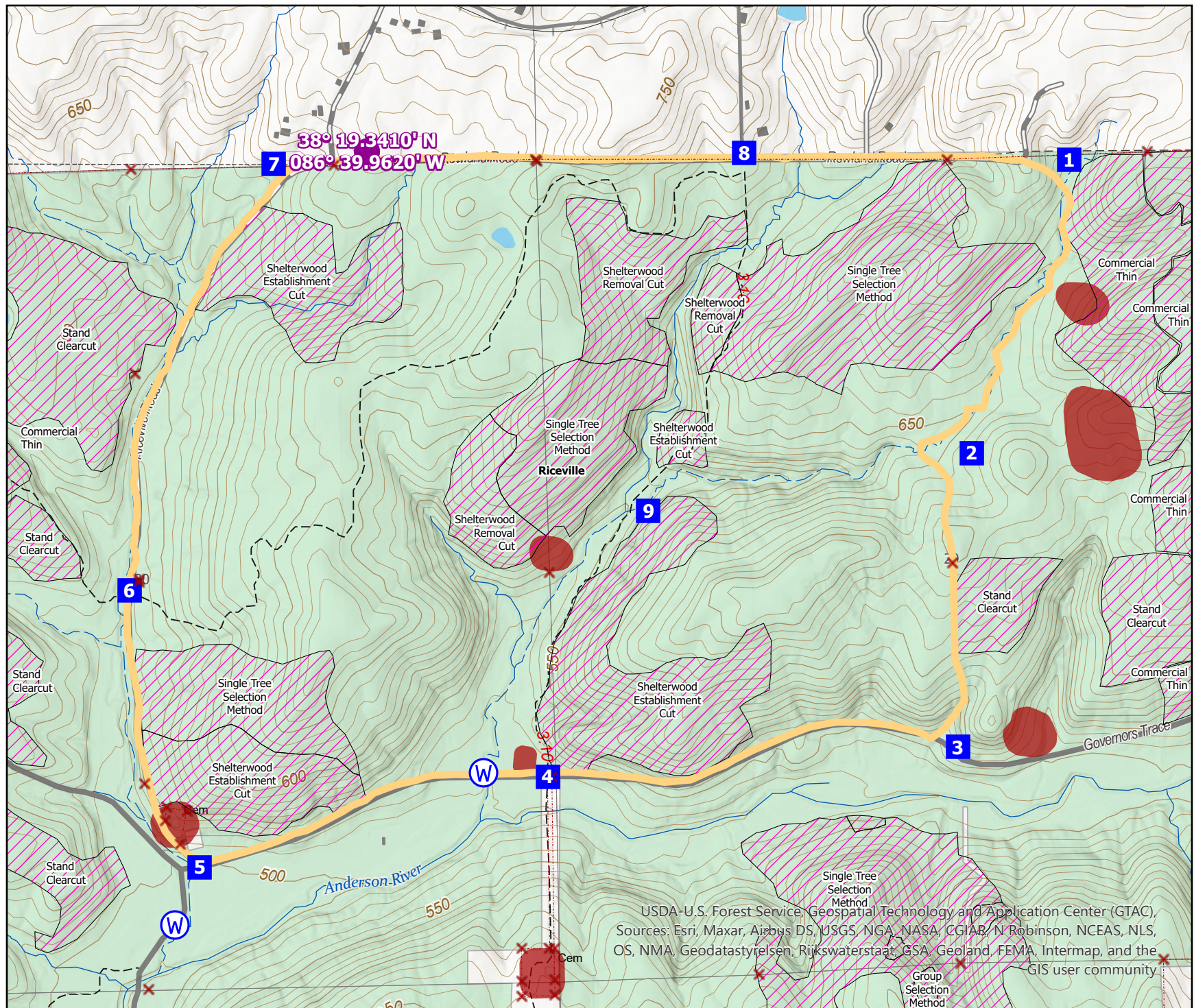


Riceville

503 Acres
3.69 Line Miles

-  Burn Units
-  Drop Point
-  Helispot
-  Water Source
-  Landlines Marked
-  Monuments
-  Do Not Burn, Mow or Dig
-  Silviculture



Hoosier National Forest
Tell City Ranger District
Crawford County

Cartography by:
Logan Scherschel
8/4/2025

USDA-U.S. Forest Service, Geospatial Technology and Application Center (GTAC),
Sources: Esri, Maxar, Airbus DS, USGS, NGA, NASA, CGIAR, N Robinson, NCEAS, NLS,
OS, NMA, Geodatastyrelsen, Rijkswaterstaat, GSA, Geoland, FEMA, Intermap, and the
GIS user community

