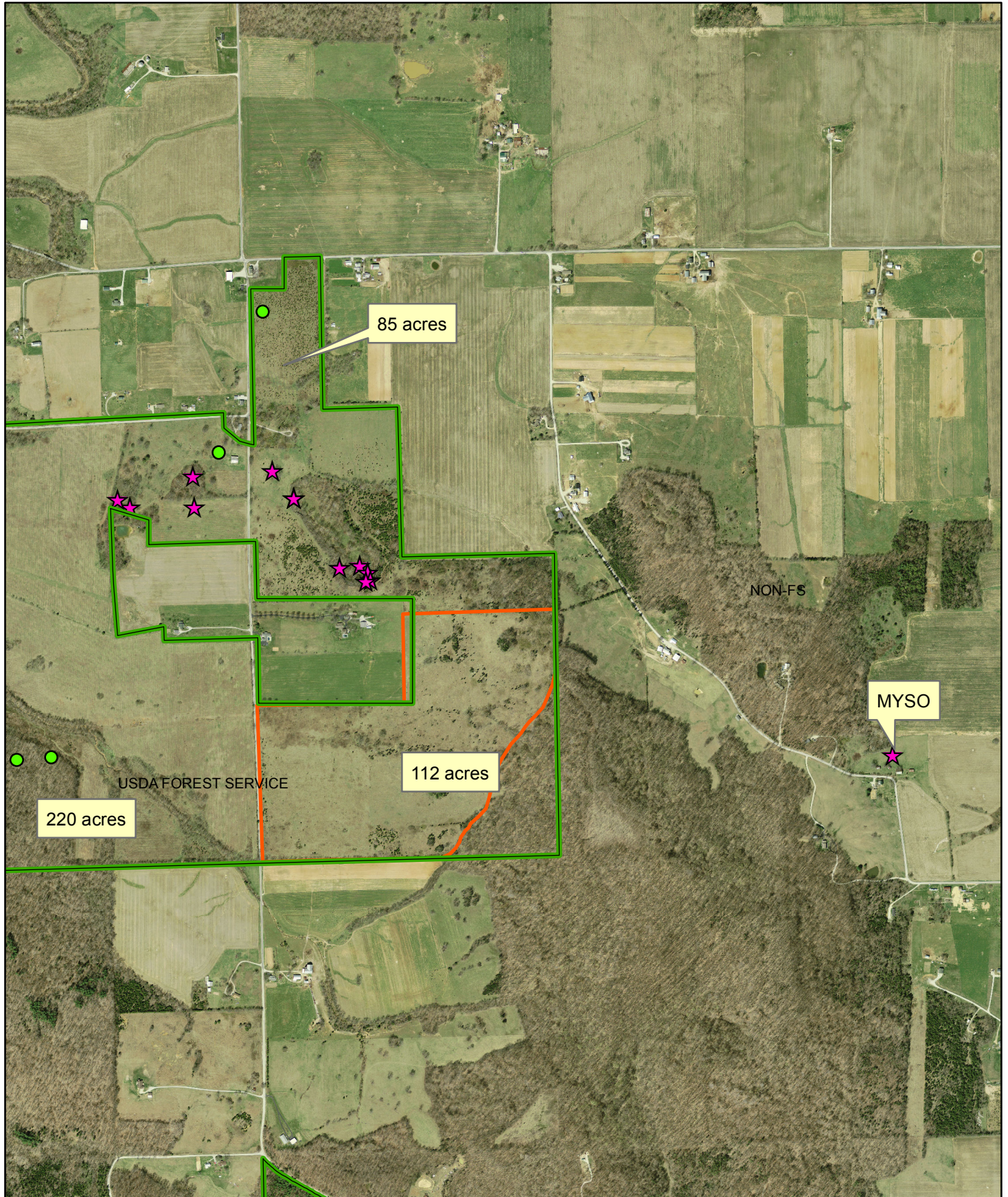




# WESLEY CHAPEL SPECIAL AREA - INTERNAL USE ONLY



**Data Distribution Liability Statement**

This product is reproduced from geospatial information prepared by the U.S. Department of Agriculture, Forest Service. GIS data and product accuracy may vary. They may be: developed from sources of differing accuracy, accurate only at certain scales, based on modeling or interpretation, incomplete while being created or revised, etc. Using GIS products for purposes other than those for which they were created, may yield inaccurate or misleading results. This information was released on 07/01/2016. The Forest Service reserves the right to correct, update, modify, or replace, GIS products without notification. For more information, contact the Hoosier National Forest Supervisors Office: 812-275-5987.

Opening Boundary	
Caves	

Orange County

