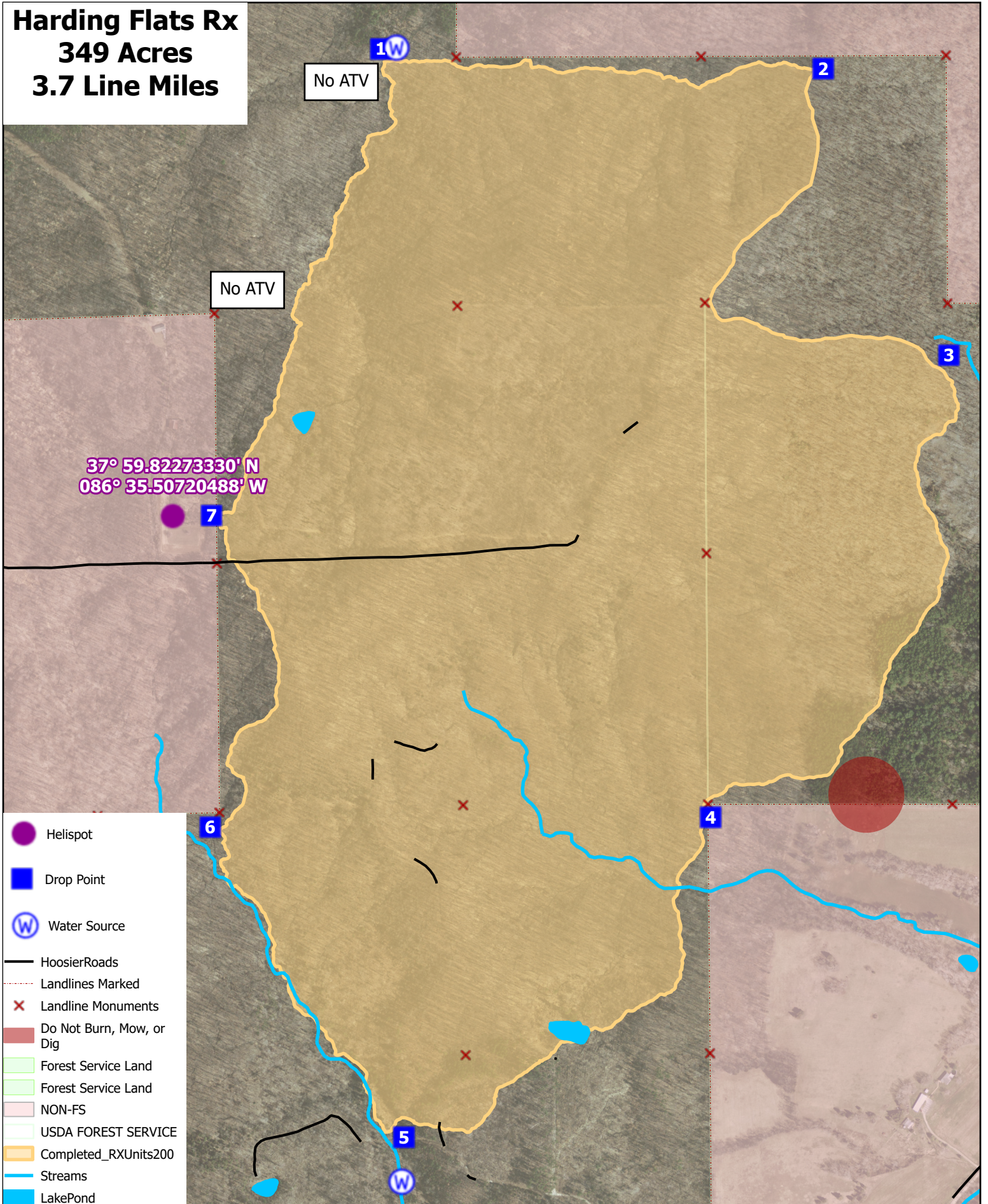


Harding Flats Rx
349 Acres
3.7 Line Miles



- Helispot
- Drop Point
- Water Source
- HoosierRoads
- Landlines Marked
- Landline Monuments
- Do Not Burn, Mow, or Dig
- Forest Service Land
- Forest Service Land
- NON-FS
- USDA FOREST SERVICE
- Completed_RXUnits200
- Streams
- LakePond



Hoosier National Forest
 Tell City Ranger District
 Perry County, IN



0

0.28

0.55

Miles

Cartography by: Logan Scherschel 03/01/2024