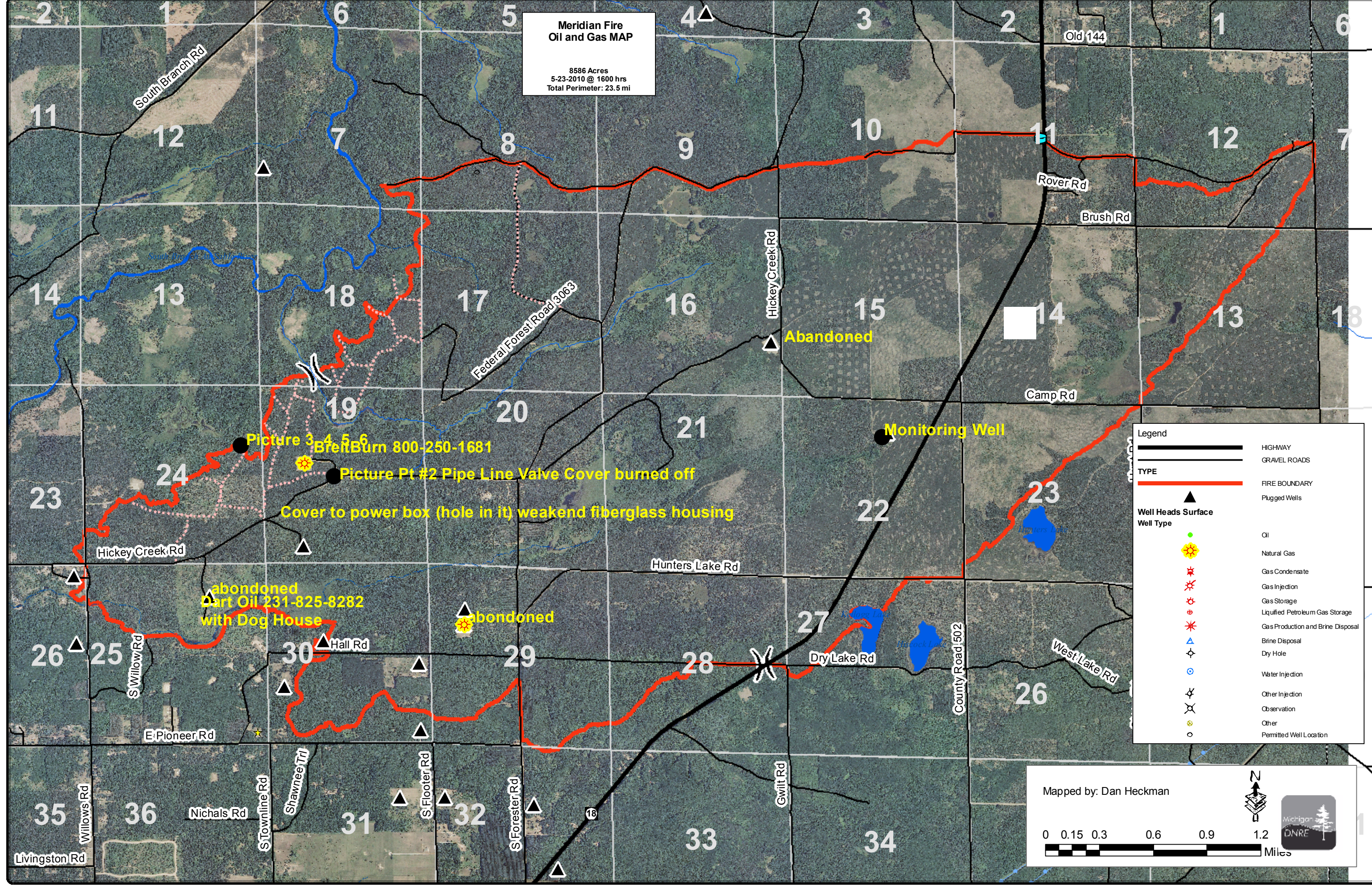


**Meridian Fire  
Oil and Gas MAP**

8586 Acres  
5-23-2010 @ 1600 hrs  
Total Perimeter: 23.5 mi



**Legend**

|                           |                                   |
|---------------------------|-----------------------------------|
|                           | HIGHWAY                           |
|                           | GRAVEL ROADS                      |
| <b>TYPE</b>               |                                   |
|                           | FIRE BOUNDARY                     |
|                           | Plugged Wells                     |
| <b>Well Heads Surface</b> |                                   |
| <b>Well Type</b>          |                                   |
|                           | Oil                               |
|                           | Natural Gas                       |
|                           | Gas Condensate                    |
|                           | Gas Injection                     |
|                           | Gas Storage                       |
|                           | Liquefied Petroleum Gas Storage   |
|                           | Gas Production and Brine Disposal |
|                           | Brine Disposal                    |
|                           | Dry Hole                          |
|                           | Water Injection                   |
|                           | Other Injection                   |
|                           | Observation                       |
|                           | Other                             |
|                           | Permitted Well Location           |

Mapped by: Dan Heckman

Picture 3  
Brent Burn 800-250-1681

Picture Pt #2 Pipe Line Valve Cover burned off

Cover to power box (hole in it) weekend fiberglass housing

abandoned  
Dart Oil 231-825-8282  
with Dog House

abandoned

Abandoned

Monitoring Well