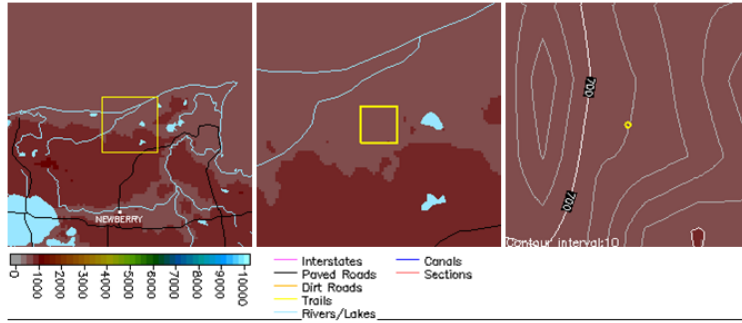


# Duck Lake New (WILDFIRE) (Requested: 1654 EDT 5/25/12)

Forecast complete at 1658 EDT 5/25/12

Requested by: DNR



**Location:** Legal: Lat/Lon: 46.63677/85.46130 Quad: (46°38'12"N 85°27'40"W) (BETSY LAKE NW MI)

Elevation: 670 Drainage: unknown Aspect: Flat Size: unknown

Fuel Type: unknown (Sheltering Unknown)

## Observations:

Place Elev Time Wind Temp Wetbulb RH Dewpt Remarks

### Requested Parameters Remarks

XXX Sky / Weather  
XXX Temperature  
XXX Relative Humidity  
XXX General Wind  
XXX Haines Index  
XXX Smoke Dispersion  
... Lightning Activity Level  
XXX Mixing Height  
... Wind Wave  
XXX Rainfall Amount

## FORECAST:

IF CONDITIONS BECOME UNREPRESENTATIVE,  
CONTACT THE NATIONAL WEATHER SERVICE.

SPOT FORECAST FOR DUCK LAKE NEW...MI DNR  
NATIONAL WEATHER SERVICE MARQUETTE MI  
458 PM EDT FRI MAY 25 2012

FORECAST IS BASED ON REQUEST TIME OF 1653 EDT ON MAY 25.  
IF CONDITIONS BECOME UNREPRESENTATIVE...CONTACT THE NATIONAL WEATHER SERVICE.

.DISCUSSION...THE LAKE SUPERIOR LAKE BREEZE IS SOUTH OF THIS SITE AS OF 5 PM EDT. BEHIND THE LAKE BREEZE..WINDS WILL BECOME NORTHWESTERLY. WINDS WILL DIMINISH THIS EVENING THROUGH TONIGHT...BECOMING LIGHT AND VARIABLE AROUND MIDNIGHT TONIGHT. EXPECT SOUTHEAST TO EAST WINDS SATURDAY...AS RELATIVE HUMIDITY VALUES FALL TO 35 TO 40 PERCENT. A WARM FRONT WILL MOVE THROUGH THE AREA SATURDAY EVENING...BRINGING INCREASING CHANCES OF RAIN LATE SATURDAY THROUGH SATURDAY NIGHT. THERE IS POTENTIAL FOR AROUND A QUARTER INCH OF RAIN SATURDAY NIGHT. CHANCES FOR RAIN THEN RETURN MONDAY AND MONDAY NIGHT.

.REST OF TODAY...

SKY/WEATHER.....MOSTLY SUNNY.  
MAX TEMPERATURE.....AROUND 69.  
MIN HUMIDITY.....49 PERCENT.  
GENERAL WINDS.....NORTHWEST WINDS 10 TO 15 MPH.  
HAINES INDEX.....3...OR VERY LOW POTENTIAL FOR LARGE PLUME  
DOMINATED FIRE GROWTH.  
TRANSPORT WINDS....WEST 21 TO 34 MPH.  
VENTILATION INDEX...GOOD (464).  
MIXING HEIGHT.....600-1900 FT AGL.  
RAINFALL AMOUNT.....0.00 INCHES.

TIME (EDT)	5PM	6PM	7PM
SKY (%)	27	29	31
WEATHER COV	....	....	....
WEATHER TYPE	....	....	....
TEMP	58	55	53
RH	52	57	62
GENERAL WIND DIR	NW	NW	NW
GENERAL WIND SPD	12	12	12
GENERAL WIND GST	25	25	25
VINDX KT-FT/100	464	261	128
MIX HGT (KFT)	1.9	1.1	0.6
HAINES INDEX	3	3	3

.TONIGHT...

SKY/WEATHER.....PARTLY CLOUDY.  
MIN TEMPERATURE.....AROUND 44.  
MAX HUMIDITY.....86 PERCENT.  
GENERAL WINDS.....WEST WINDS 5 TO 10 MPH EARLY IN THE EVENING  
BECOMING SOUTH 5 MPH OR LESS AFTER MIDNIGHT.  
HAINES INDEX.....3 TO 5...OR VERY LOW TO MODERATE POTENTIAL FOR  
LARGE PLUME DOMINATED FIRE GROWTH.  
TRANSPORT WINDS....WEST 12 TO 31 MPH DECREASING TO 11 TO 18 MPH

```

.....
VENTILATION INDEX...POOR (0).
MIXING HEIGHT.....0-300 FT AGL.
RAINFALL AMOUNT.....0.00 INCHES.

TIME (EDT)      8PM 9PM 10P 11P MID 1AM 2AM 3AM 4AM 5AM 6AM 7AM
SKY (%).....33 33 33 34 34 34 34 36 38 40 41 43
WEATHER COV....
WEATHER TYPE...
TEMP.....52 52 51 49 48 48 47 46 45 45 45 45
RH.....62 63 67 71 74 77 80 82 83 83 86 86
GENERAL WIND DIR..W  W  W  W  W  W  SW  SW  SW  S  S  S
GENERAL WIND SPD..8  8  8  6  6  6  4  4  4  4  4  4
GENERAL WIND GST..15 15 15 10 10 10 5  5  5  5  5  5
VINDX KT-FI/100.58 27 34 50 48 45 43 38 33 28 3  0
MIX HGT (KFT)...0.3 0.1 0.2 0.3 0.3 0.3 0.3 0.3 0.3 0.1 0.1
HAINES INDEX....3  4  4  5  5  5  5  5  4  4  4  3

```

```

.SATURDAY...

SKY/WEATHER.....PARTLY SUNNY. A SLIGHT CHANCE OF RAIN SHOWERS
AND THUNDERSTORMS IN THE AFTERNOON.
MAX TEMPERATURE.....AROUND 71.
MIN HUMIDITY.....38 PERCENT.
GENERAL WINDS.....VARIABLE WINDS 5 MPH OR LESS BECOMING SOUTHEAST
4 TO 9 MPH LATE IN THE MORNING...THEN SHIFTING
TO THE NORTHEAST 5 TO 10 MPH IN THE AFTERNOON.
GUSTY AND ERRATIC WINDS EXPECTED NEAR
THUNDERSTORMS IN THE AFTERNOON.
HAINES INDEX.....3...OR VERY LOW POTENTIAL FOR LARGE PLUME
DOMINATED FIRE GROWTH.
TRANSPORT WINDS....WEST 5 TO 13 MPH SHIFTING TO THE SOUTHEAST 1 TO
10 MPH LATE.
VENTILATION INDEX...GOOD (307).
MIXING HEIGHT.....300-1700 FT AGL INCREASING TO 2800-4400 FT AGL
LATE IN THE MORNING...THEN DECREASING TO
800-1700 FT AGL IN THE AFTERNOON.
RAINFALL AMOUNT.....0.03 INCHES.

```

```

TIME (EDT)      8AM 9AM 10A 11A 12P 1PM 2PM 3PM 4PM 5PM 6PM 7PM
SKY (%).....45 46 47 48 48 49 50 56 61 67 72 78
WEATHER COV....          SCH SCH SCH SCH SCH
WEATHER TYPE...          TSM TSM TSM TSM TSM
TEMP.....48 54 62 68 69 68 67 66 66 65 64 62
RH.....78 63 49 41 38 39 41 41 42 43 46 50
GENERAL WIND DIR..S  S  S  SE SE SE NE NE NE NE NE
GENERAL WIND SPD..3  3  3  5  5  5  6  6  6  7  7  7
GENERAL WIND GST..5  5  5          10 10 10 10 10
VINDX KT-FI/100.28 167 299 307 235 168 86 57 41 40 43 48
MIX HGT (KFT)...0.3 1.7 3.3 4.4 3.9 2.8 1.7 1.4 1.4 1.3 1.1 0.8
HAINES INDEX....3  3  3  3  3  3  3  3  3  3  3  3

```

**Please provide feedback:**

Send Feedback    CANCEL

[Printer Friendly Version of Forecast](#)

[Back to Spot List](#)   [Copy Info to New Spot Request](#)



National Oceanic and Atmospheric Administration (NOAA)

[Privacy Policy](#)

National Weather Service  
 Fire & Public Weather Services Branch  
 Page Author: NWS Internet Services Team  
 Page last updated at 8:57 am EST 3/5/07