

90°58'30"W

90°58'0"W

90°57'30"W

37°30'30"N

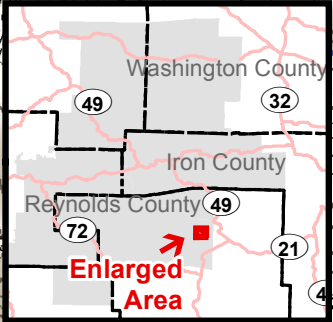
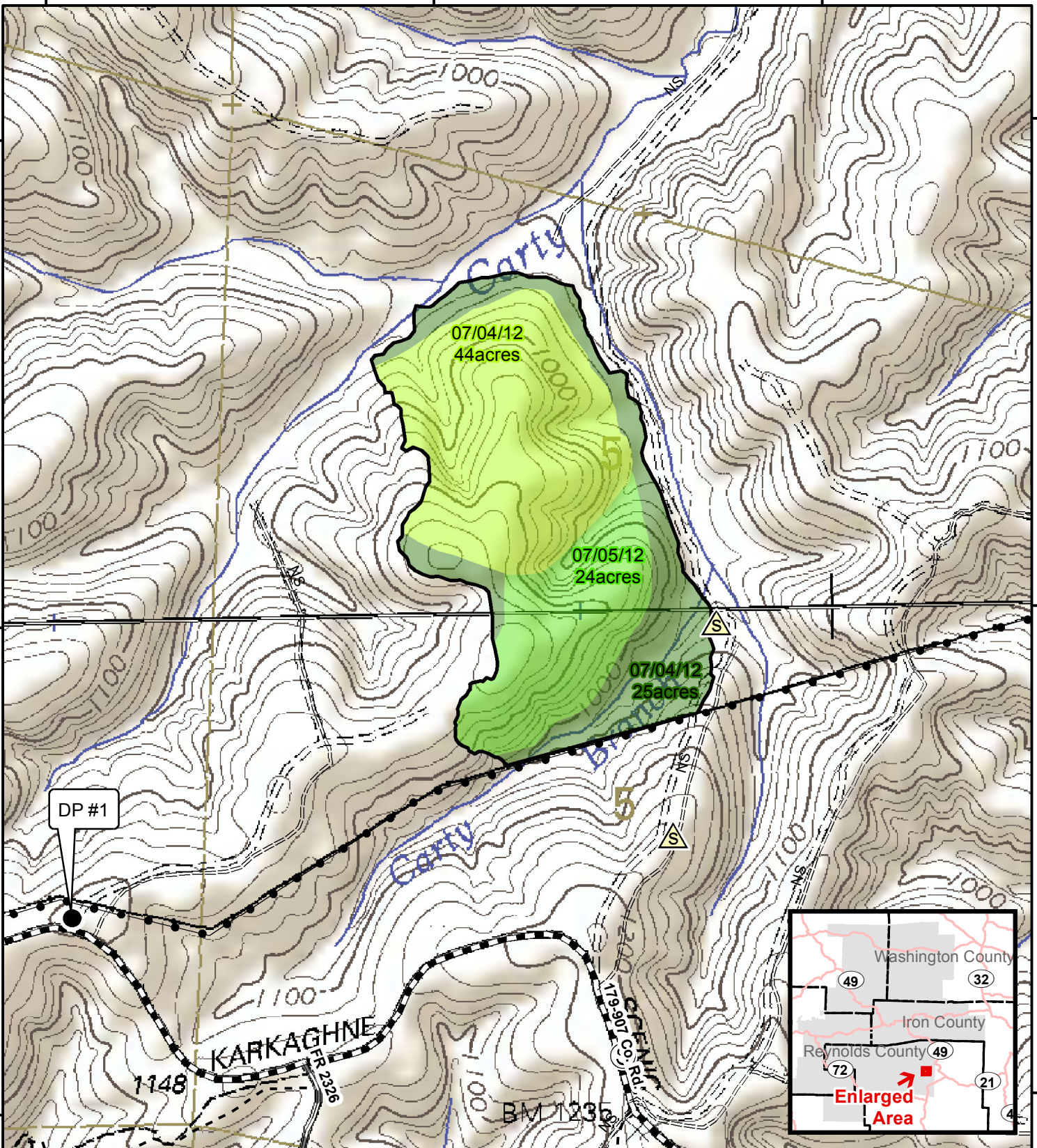
37°30'30"N

37°30'0"N

37°30'0"N

37°29'30"N

37°29'30"N



Sheet 1 of 1

References:
 Incident Number = MO-MTF-120013
 Pcode = P9G0Q0
 See Attached Text for References

Disclaimer
 The USDA Forest Service makes no warranty, expressed or implied regarding the data displayed on this map, and reserves the right to correct, update, modify, or replace this information without notification.

Scale = 1:10,000



- Little Sand Fire
- Forest Service
- FirePoint**
- Drop Point
- Safety Zone
- Staging Area
- Roads**
- County
- Forest Road
- Road
- State
- ATV Trails - Sutton Bluff System
- Powerline

Fire Growth By Day

- Cumulative Acres**
- 07/04/2012 @2300 - 44 Acres
 - 07/05/2012 @2130 - 68 Acres
 - 07/06/2012 @1800 - 93 Acres

Map Creation Date - 9 July 2012 DLT

Low Gap Wildfire

July 10th, 2012

Final Progression Map

T32N R1E Sec. 5
 5th Principal Meridian, Reynolds Co. MO
 Edge Hill & Centerville 7.5 Quadrangles

U.S. Forest Service - Region 9
 Mark Twain National Forest
 Salem/Potosi/Fredericktown RD
 U.S. Congressional District - Missouri, 8th District