

Southern Tier Flood 2017
MO-MTF-170313

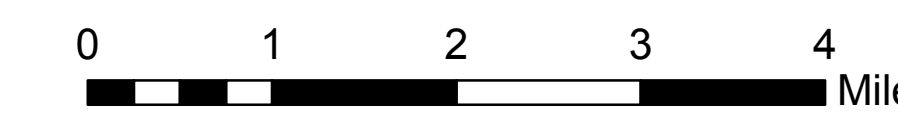
Assessment Map Branch Two



Divisions Eleven Point and Current River
Eleven Point/Doniphan Ranger District
Mark Twain National Forest



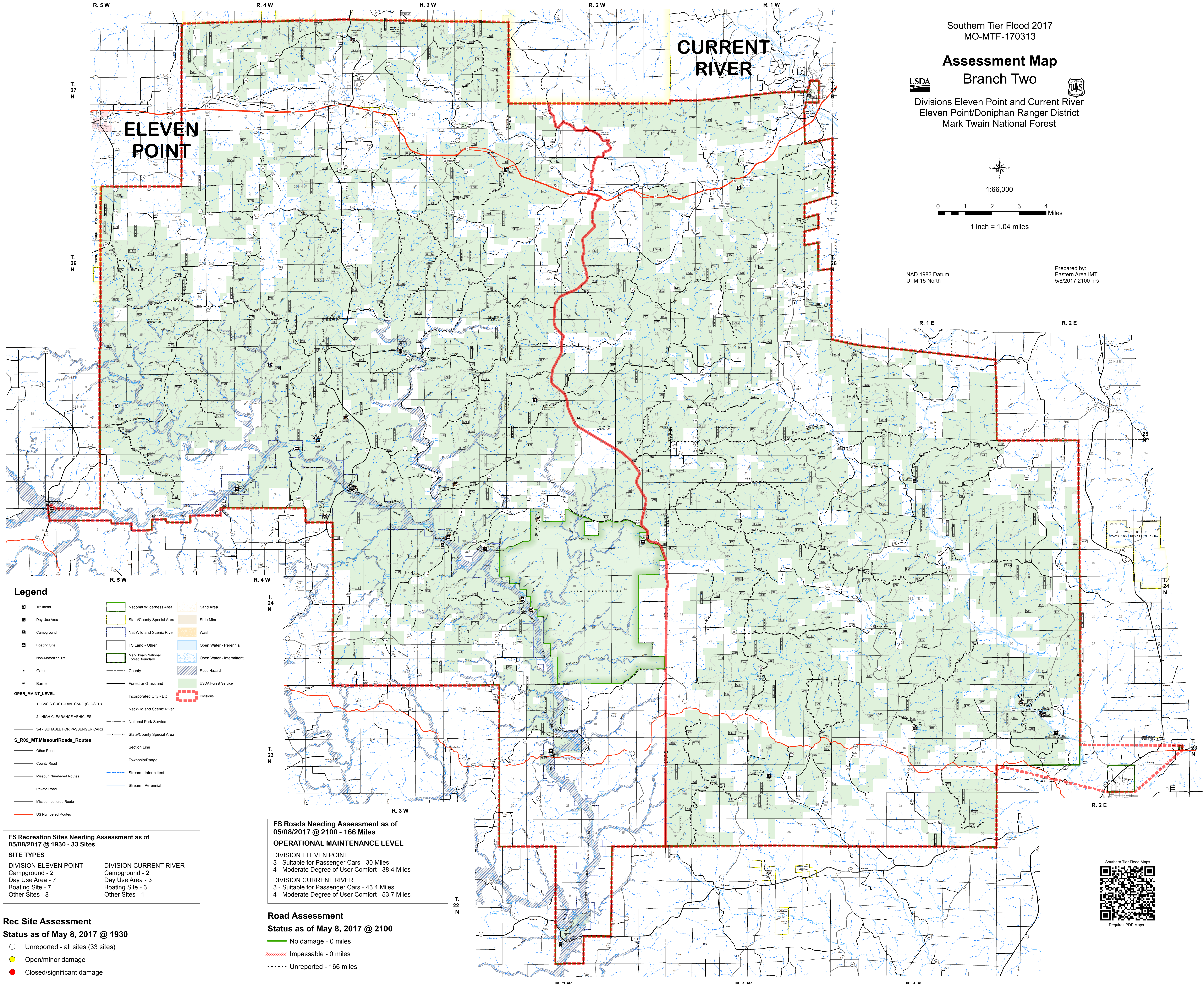
1:66,000



1 inch = 1.04 miles

NAD 1983 Datum
UTM 15 North

Prepared by:
Eastern Area IMT
5/8/2017 2100 hrs



Legend

Trailhead	National Wilderness Area	Sand Area
Day Use Area	State/County Special Area	Strip Mine
Campground	Nat Wild and Scenic River	Wash
Boating Site	FS Land - Other	Open Water - Perennial
Non-Motorized Trail	Mark Twain National Forest Boundary	Open Water - Intermittent
Gate	County	Flood Hazard
Barrier	Forest or Grassland	USDA Forest Service
1 - BASIC CUSTODIAL CARE (CLOSED)	Incorporated City - Etc	Divisions
2 - HIGH CLEARANCE VEHICLES	Nat Wild and Scenic River	
34 - SUITABLE FOR PASSENGER CARS	National Park Service	
S_R09_MT_MissouriRoads_Routes	State/County Special Area	
Other Roads	Section Line	
County Road	Township/Range	
Missouri Numbered Routes	Stream - Intermittent	
Private Road	Stream - Perennial	
Missouri Lettered Route		
US Numbered Routes		

FS Recreation Sites Needing Assessment as of 05/08/2017 @ 1930 - 33 Sites

SITE TYPES

DIVISION ELEVEN POINT	DIVISION CURRENT RIVER
Campground - 2	Campground - 2
Day Use Area - 7	Day Use Area - 3
Boating Site - 7	Boating Site - 3
Other Sites - 8	Other Sites - 1

FS Roads Needing Assessment as of 05/08/2017 @ 2100 - 166 Miles

OPERATIONAL MAINTENANCE LEVEL

DIVISION ELEVEN POINT	
3 - Suitable for Passenger Cars - 30 Miles	
4 - Moderate Degree of User Comfort - 38.4 Miles	
DIVISION CURRENT RIVER	
3 - Suitable for Passenger Cars - 43.4 Miles	
4 - Moderate Degree of User Comfort - 53.7 Miles	

Rec Site Assessment

Status as of May 8, 2017 @ 1930

	Unreported - all sites (33 sites)
	Open/minor damage
	Closed/significant damage

Road Assessment

Status as of May 8, 2017 @ 2100

	No damage - 0 miles
	Impassable - 0 miles
	Unreported - 166 miles

