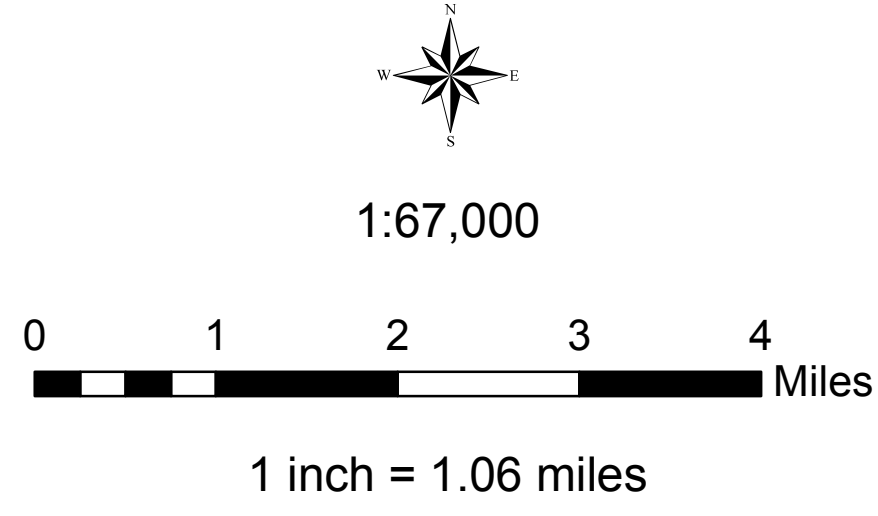


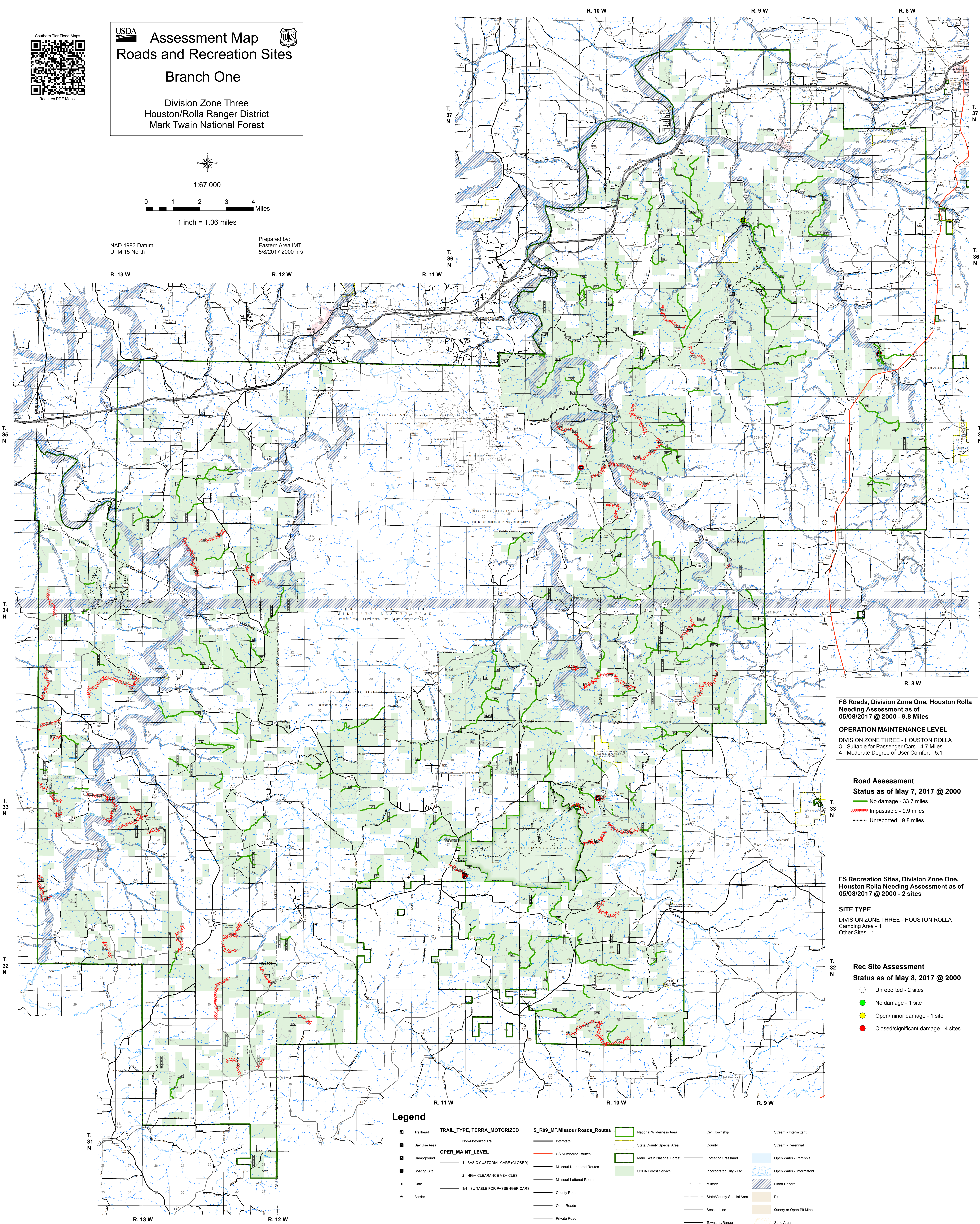


USDA **Assessment Map** **UAS**
Roads and Recreation Sites
Branch One
 Division Zone Three
 Houston/Rolla Ranger District
 Mark Twain National Forest



NAD 1983 Datum
 UTM 15 North

Prepared by:
 Eastern Area IMT
 5/8/2017 2000 hrs



FS Roads, Division Zone One, Houston Rolla
 Needing Assessment as of
 05/08/2017 @ 2000 - 9.8 Miles

OPERATION MAINTENANCE LEVEL
 DIVISION ZONE THREE - HOUSTON ROLLA
 3 - Suitable for Passenger Cars - 4.7 Miles
 4 - Moderate Degree of User Comfort - 5.1

Road Assessment
 Status as of May 7, 2017 @ 2000
 - No damage - 33.7 miles
 - Impassible - 9.9 miles
 - Unreported - 9.8 miles

FS Recreation Sites, Division Zone One, Houston Rolla
 Needing Assessment as of
 05/08/2017 @ 2000 - 2 sites

SITE TYPE
 DIVISION ZONE THREE - HOUSTON ROLLA
 Camping Area - 1
 Other Sites - 1

Rec Site Assessment
 Status as of May 8, 2017 @ 2000
 - Unreported - 2 sites
 - No damage - 1 site
 - Open/minor damage - 1 site
 - Closed/significant damage - 4 sites

Legend

- | | | | | | |
|--|-------------------------------------|--|--|--|--|
| | TRAIL_TYPE, TERRA, MOTORIZED | | | | |
| | | | | | |
| | OPER_MAINT_LEVEL | | | | |
| | | | | | |
| | | | | | |
| | | | | | |
| | | | | | |
| | | | | | |
| | | | | | |
| | | | | | |