

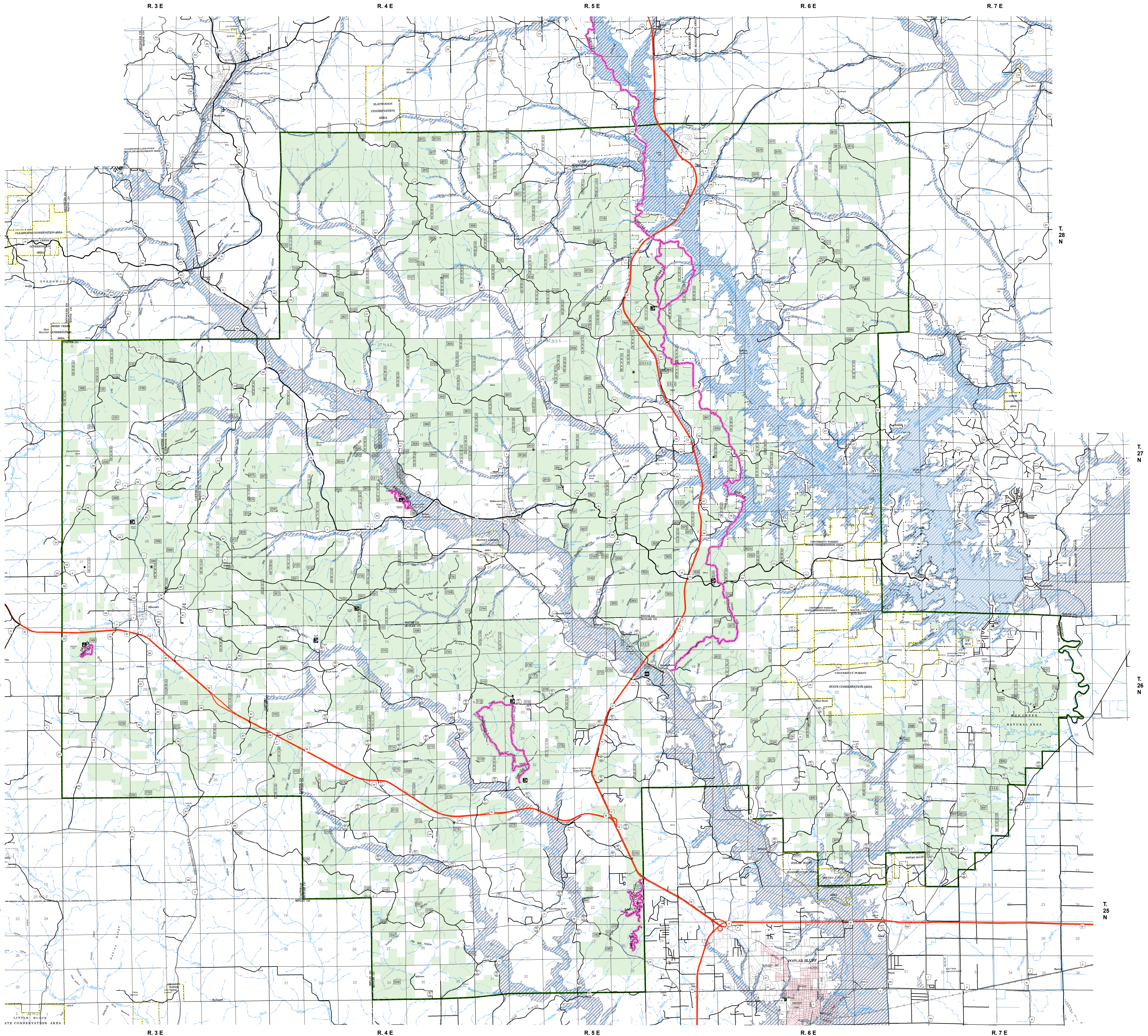


# Assessment Map Trails



## Branch Two

Division Black River  
Poplar Bluff Ranger District  
Mark Twain National Forest



### Legend

- |                                    |                                   |                                      |                            |                         |                            |
|------------------------------------|-----------------------------------|--------------------------------------|----------------------------|-------------------------|----------------------------|
| Trailhead                          | <b>OPER_MAINT_LEVEL</b>           | <b>S_R09_MT.MissouriRoads_Routes</b> | State/County Special Area  | Civil Township          | Canal/Aque/Ditch           |
| Boating Site                       | 1 - BASIC CUSTODIAL CARE (CLOSED) | US Numbered Routes                   | Mark Twain National Forest | County                  | Stream - Intermittent      |
| Gate                               | 2 - HIGH CLEARANCE VEHICLES       | Missouri Numbered Routes             | USDA Forest Service        | Missouri Lettered Route | Stream - Perennial         |
| Barrier                            | 3/4 - SUITABLE FOR PASSENGER CARS | County Road                          | Incorporated City - Etc    | National Wildlife Area  | Land Subject to Inundation |
| <b>TRAIL_TYPE, TERRA_MOTORIZED</b> |                                   | Other Roads                          | Special Area (Old Code)    | Open Water - Perennial  | Open Water - Intermittent  |
| Non-Motorized Trail                |                                   | Private Road                         | State/County Special Area  | Flood Hazard            | Sand Area                  |
|                                    |                                   | Railroad                             | Section Line               | Strip Mine              |                            |
|                                    |                                   |                                      | Township/Range             |                         |                            |

**FS Trails, Zone Black River, Poplar Bluff,  
Needing Assessment as of  
05/08/2017 @ 2000 - 50.2 Miles**

**TRAIL TYPE**  
DIVISION ZONE BLACK RIVER - POPLAR BLUFF  
Equestrian - 39.7 miles  
Bicycle - 40.4 miles  
Hiking - 41.5 miles

**Status as of May 8, 2017 @ 2100**  
Unreported - 50.2 miles

