

R. 20 W

R. 19 W

R. 18 W



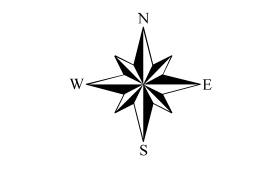
Southern Tier Flood 2017
MO-MTF-170313



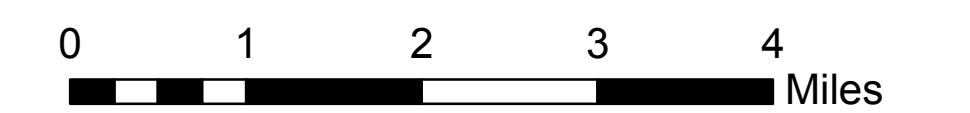
Assessment Map Trails

Branch One

Division Zone 3
Ava Ranger District
Mark Twain National Forest



1:69,238



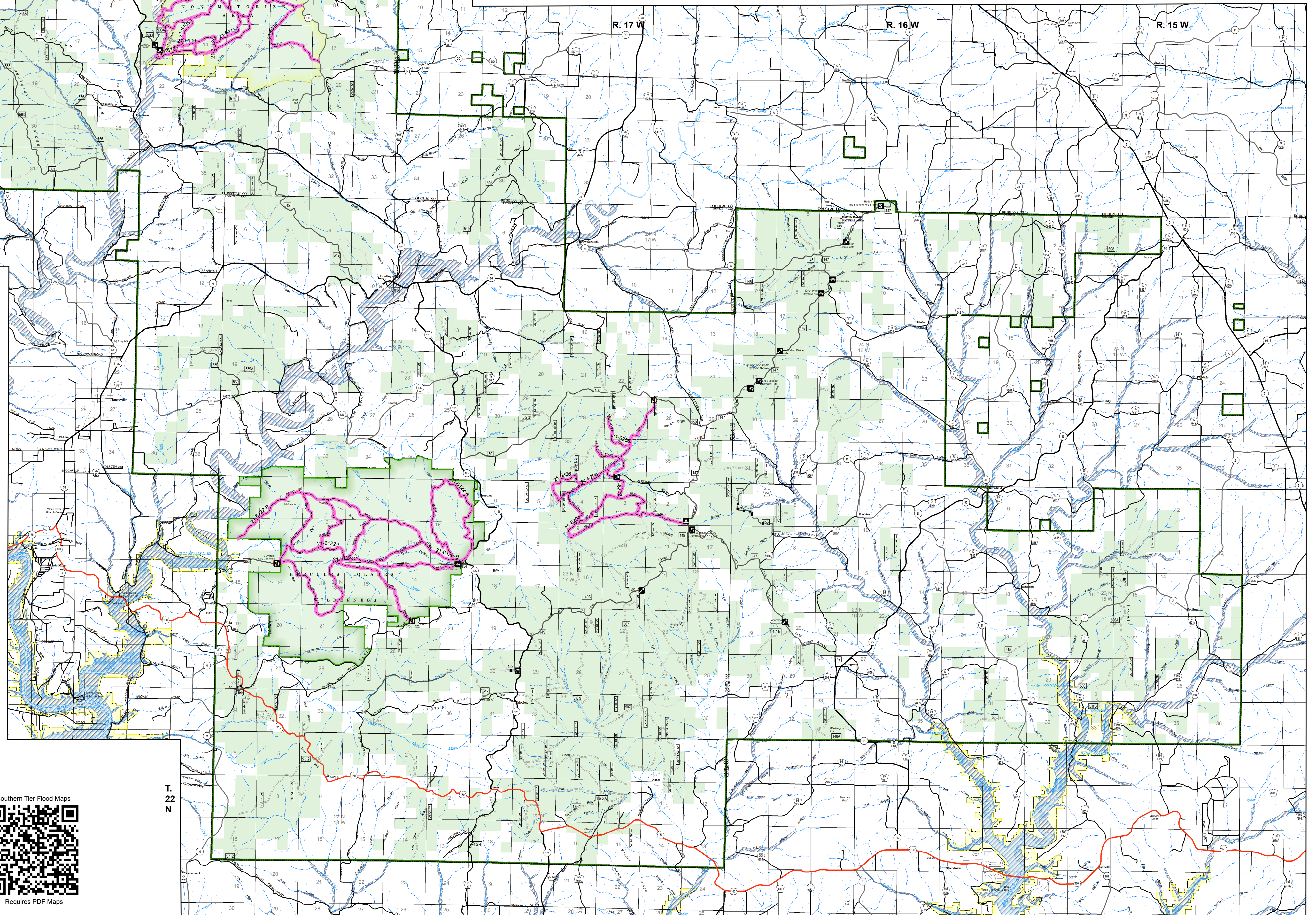
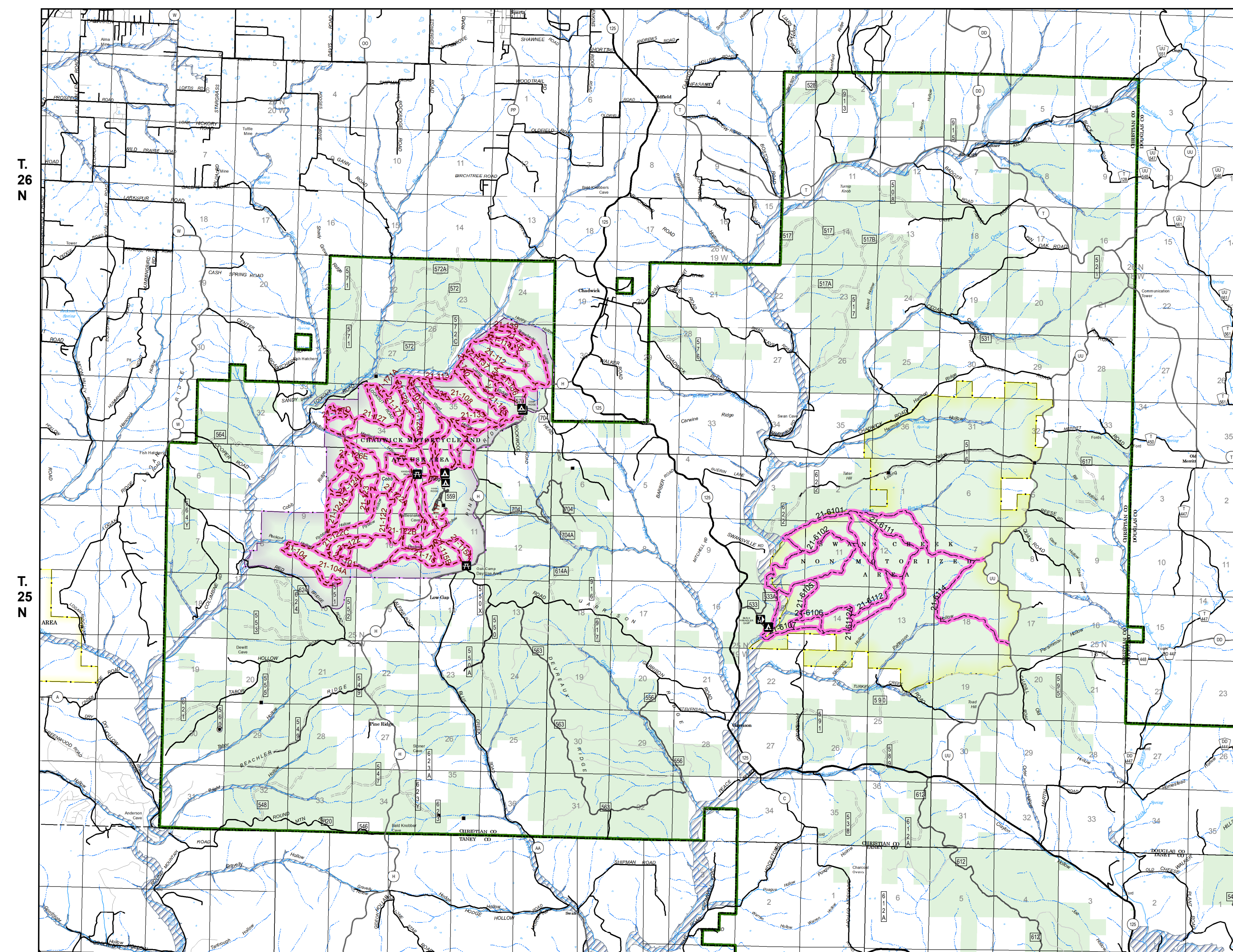
1 inch = 1.09 miles

NAD 1983 Datum
UTM 15 North

Prepared by:
Eastern Area IMT
5/8/2017 2000 hrs

Legend

- Trailhead
 - Observation Site
 - Info Site/Fee Station
 - Day Use Area
 - Campground
 - Non-Motorized Trail
 - Motorized Trail
 - Gate
 - Barrier
- OPER_MAINT_LEVEL**
- 1 - BASIC CUSTODIAL CARE (CLOSED)
 - 2 - HIGH CLEARANCE VEHICLES
 - 3/4 - SUITABLE FOR PASSENGER CARS
- S_R09_MT.MissouriRoads_Routes**
- US Numbered Routes
 - Missouri Numbered Routes
 - Missouri Lettered Route
 - County Road
 - Other Roads
 - Private Road
- TRAIL_TYPE, TERRA_MOTORIZED**
- National Wilderness Area
 - State/County Special Area
 - FS Spec Mgt/Rec Area
 - Mark Twain National Forest
 - County
 - Incorporated City - Etc
 - State/County Special Area
 - Section Line
 - Township/Range
 - Channel in Water Area
 - Stream - Intermittent
 - Stream - Perennial
 - Pit
 - Sand Area
 - Land Subject to Inundation
 - Open Water - Perennial
 - Open Water - Intermittent
 - Flood Hazard
 - USDA Forest Service



**FS Trails, Division Zone 3 Ava, Needing
Assessment as of 05/08/2017 @ 2000 - 136.7 Miles**

TRAIL TYPE

- DIVISION ZONE 3 - AVA
- ATV Trails - 57.4 Miles
- Motorcycle Trails - 67.1 Miles
- Equestrian Trails - 69.6 Miles
- Bicycle Trails - 99.6 Miles
- Hiking Trails - 69.6 Miles

Status as of May 8, 2017 @ 2100

Unreported - 136.7 miles



Requires PDF Maps