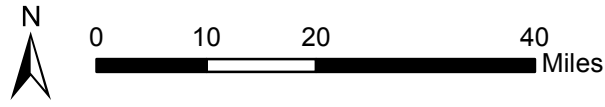


**USDA** **Mark Twain NF Flood Support**  
**MO-MTF-170313**  
**Briefing Map**  
 Operational Period  
 May 9, 2017

Prepared by EA IMT  
 May 8, 2017, 2200 hrs

NAD83 UTM 15N

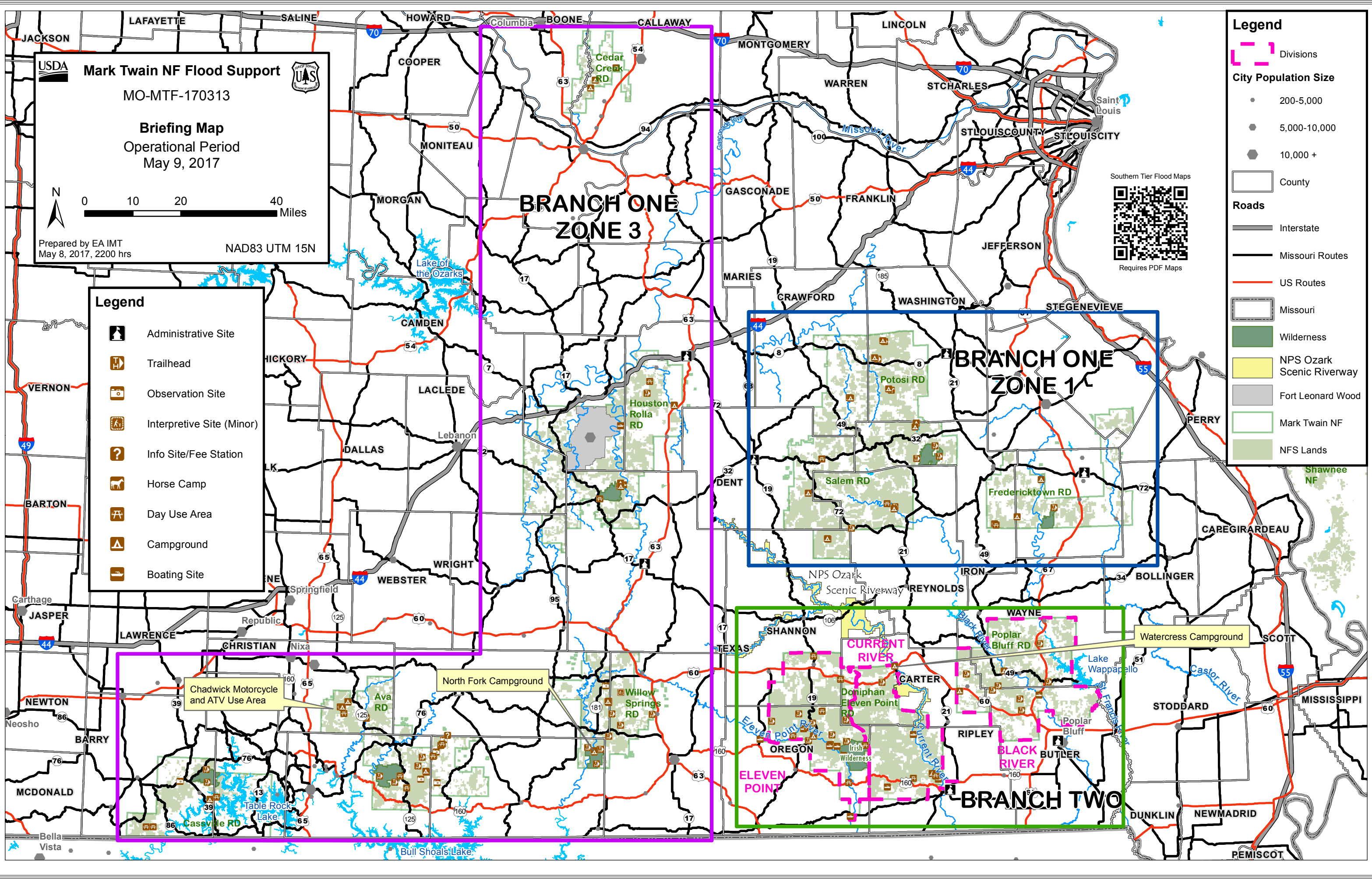


**Legend**

- Administrative Site
- Trailhead
- Observation Site
- Interpretive Site (Minor)
- Info Site/Fee Station
- Horse Camp
- Day Use Area
- Campground
- Boating Site

**Legend**

- Divisions
- City Population Size**
  - 200-5,000
  - 5,000-10,000
  - 10,000+
- County
- Roads**
  - Interstate
  - Missouri Routes
  - US Routes
- Missouri
- Wilderness
- NPS Ozark Scenic Riverway
- Fort Leonard Wood
- Mark Twain NF
- NFS Lands



Chadwick Motorcycle and ATV Use Area

North Fork Campground

Watercross Campground

CURRENT RIVER

ELEVEL POINT

BLACK RIVER

BRANCH TWO

BRANCH ONE  
ZONE 3

BRANCH ONE  
ZONE 1