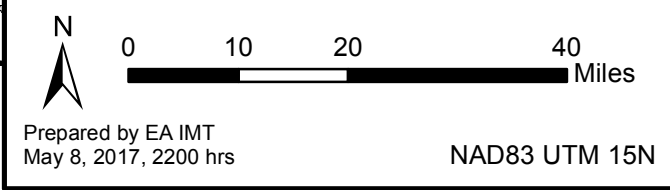


USDA Mark Twain NF Flood Support
MO-MTF-170313
Incident Action Plan Map
Operational Period
May 9, 2017



- Legend**
- Administrative Site
 - Trailhead
 - Observation Site
 - Interpretive Site (Minor)
 - Info Site/Fee Station
 - Horse Camp
 - Day Use Area
 - Campground
 - Boating Site

- Legend**
- City Population Size**
- 200-5,000
 - 5,000-10,000
 - 10,000 +
- Roads**
- Interstate
 - Missouri Routes
 - US Routes
- Other Features**
- Missouri
 - Wilderness
 - NPS Ozark Scenic Riverway
 - Fort Leonard Wood
 - Mark Twain NF
 - NFS Lands

