

Southern Tier Flood 2017
MO-MTF-170313

Assessment Map

May 10, 2017 0700



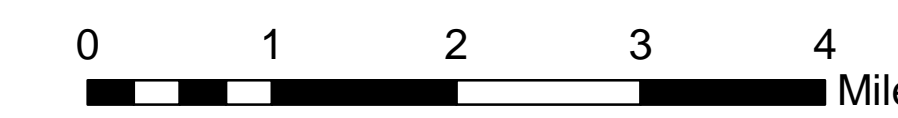
Branch Two



Divisions Eleven Point and Current River
Eleven Point/Doniphan Ranger District
Mark Twain National Forest



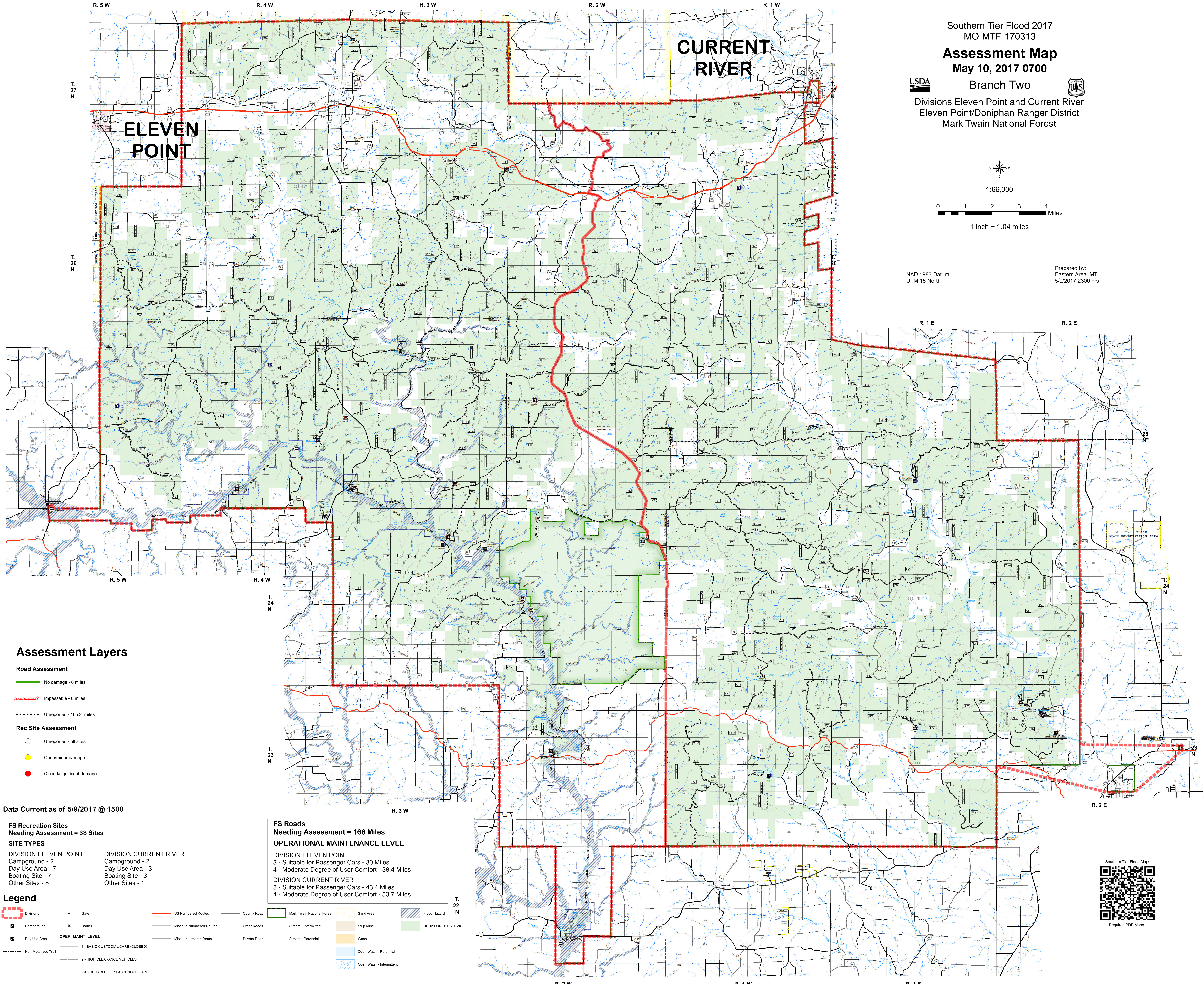
1:66,000



1 inch = 1.04 miles

NAD 1983 Datum
UTM 15 North

Prepared by:
Eastern Area IMT
5/9/2017 2300 hrs



Assessment Layers

Road Assessment

- No damage - 0 miles
- Impassable - 0 miles
- Unreported - 165.2 miles

Rec Site Assessment

- Unreported - all sites
- Open/minor damage
- Closed/significant damage

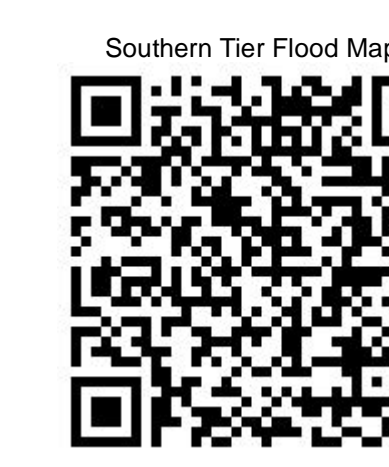
Data Current as of 5/9/2017 @ 1500

FS Recreation Sites Needing Assessment = 33 Sites	
SITE TYPES	
DIVISION ELEVEN POINT	DIVISION CURRENT RIVER
Campground - 2	Campground - 2
Day Use Area - 7	Day Use Area - 3
Boating Site - 7	Boating Site - 3
Other Sites - 8	Other Sites - 1

Legend

 Divisions	• Gate	— US Numbered Routes	— County Road	— Mark Twain National Forest	 Sand Area	 Flood Hazard
 Campground	• Barrier	— Missouri Numbered Routes	— Other Roads	— Stream - Intermittent	 Strip Mine	 USDA FOREST SERVICE
 Day Use Area	— Non-Motorized Trail	— Missouri Lettered Route	— Private Road	— Stream - Perennial	 Wash	 Open Water - Perennial
 	 	 	 	 	 	 Open Water - Intermittent
 	 	 	 	 	 	
 	 	 	 	 	 	
 	 	 	 	 	 	
 	 	 	 	 	 	

FS Roads Needing Assessment = 166 Miles	
OPERATIONAL MAINTENANCE LEVEL	
DIVISION ELEVEN POINT	DIVISION CURRENT RIVER
3 - Suitable for Passenger Cars - 30 Miles	3 - Suitable for Passenger Cars - 43.4 Miles
4 - Moderate Degree of User Comfort - 38.4 Miles	4 - Moderate Degree of User Comfort - 53.7 Miles



Requires PDF Maps