

R. 20 W

R. 19 W

R. 18 W



Southern Tier Flood 2017  
MO-MTF-170313

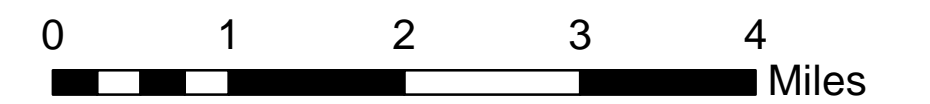


# Assessment Map Roads, Recreation Sites

May 10, 2017 0700  
Branch One  
Division Zone 3  
Ava Ranger District  
Mark Twain National Forest



1:69,238



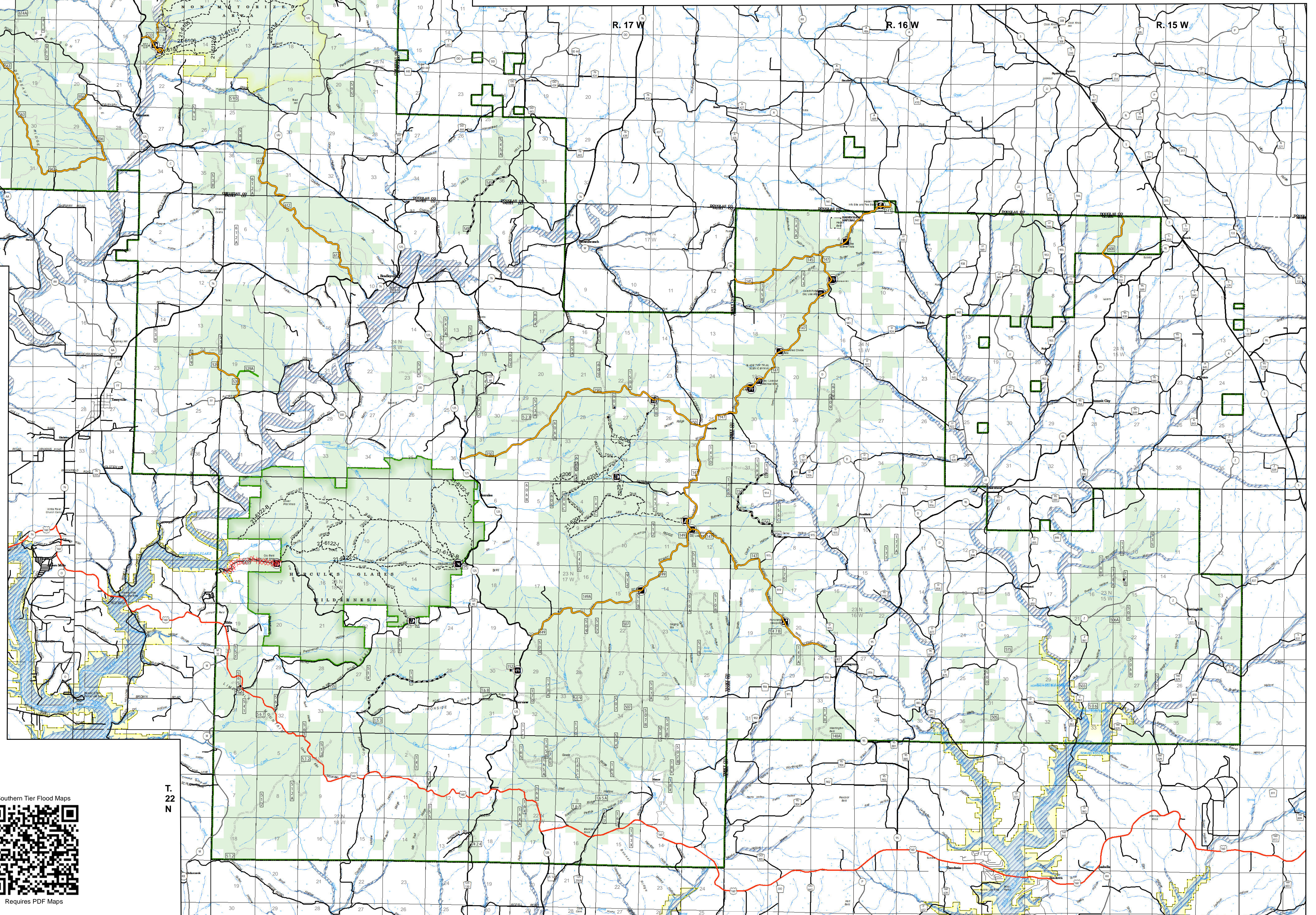
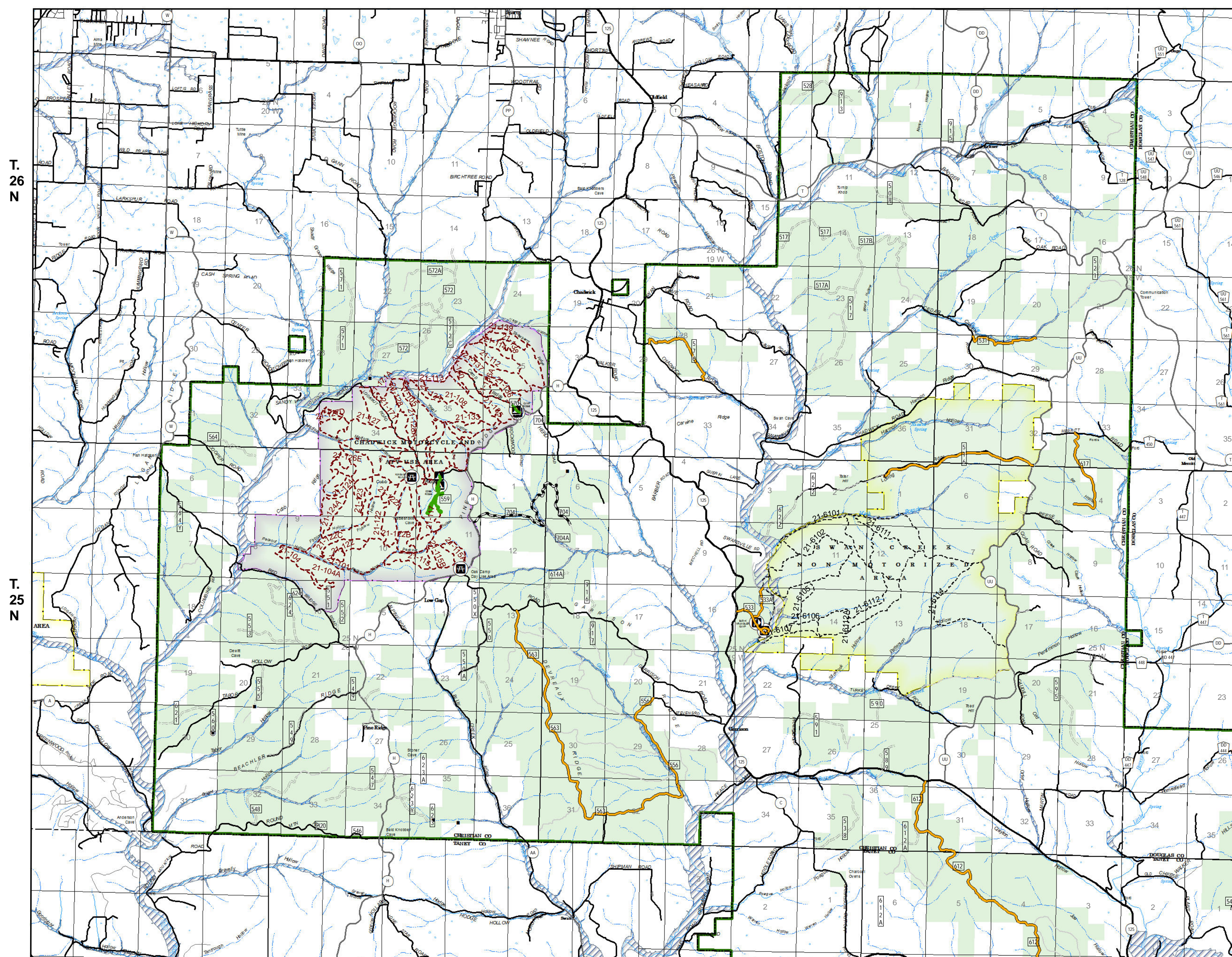
1 inch = 1.09 miles

NAD 1983 Datum  
UTM 15 North

Prepared by:  
Eastern Area IMT  
5/2017 2330 hrs

## Legend

- Trailhead
  - Observation Site
  - Interpretive Site (Minor)
  - Info Site/Fee Station
  - Horse Camp
  - Day Use Area
  - Campground
  - Boating Site
  - Non-Motorized Trail
  - Motorized Trail
  - Gate
  - Barrier
- OPER. MAINT. LEVEL**
- 1 - BASIC CUSTODIAL CARE (CLOSED)
  - 2 - HIGH CLEARANCE VEHICLES
  - 3/4 - SUITABLE FOR PASSENGER CARS
  - Interstate
  - US Numbered Routes
  - Missouri Numbered Routes
  - Missouri Lettered Route
  - County Road
  - Other Roads
  - Private Road
  - Railroad
- Mark Twain National Forest
  - Canal/Aqueduct
  - Channel in Water Area
  - Dam Carrying Road
  - Stream - Intermittent
  - Stream - Perennial
  - Waterfall
  - Mine Dump
  - Pit
  - Quarry or Open Pit Mine
  - Sand Area
  - Strip Mine
  - Tailings
  - Tailings Pond
  - Wash
  - Land Subject to Inundation
  - Open Water - Perennial
  - Open Water - Intermittent
  - Rapids
  - Flood Hazard
  - USDA FOREST SERVICE



Data Current as of 5/9/2017 @ 1500

**FS Roads, Zone 3 Ava,  
Needing Assessment = 10.8 Miles**  
**OPERATIONAL MAINTENANCE LEVEL**

DIVISION ZONE 3 - AVA  
3 - Suitable for Passenger Cars - 10.4 Miles  
4 - Moderate Degree of User Comfort - 0.4 Miles

**FS Recreation Sites, Zone 3 Ava, Needing  
Assessment as of 05/08/2017 @ 2000 - 28 Sites**

### SITE TYPES

DIVISION ZONE 3 - AVA  
Campground - 6  
Day Use Area - 7  
Picnic Site - 5  
Other Sites - 10

### Assessment Layers

#### Road Assessment

- Impassible - 1.5 miles
- Passable with Damage - 49.5 miles
- No damage - 2.3 miles
- Unreported - 10.8 miles

#### Rec Site Assessment

- Unreported - all sites
- Open/minor damage
- Closed/significant damage



Requires PDF Maps