



Requires PDF Maps

R. 27 W

R. 26 W

R. 25 W

R. 24 W

R. 23 W

T. 23 N

T. 22 N

T. 23 N

T. 22 N

T. 21 N

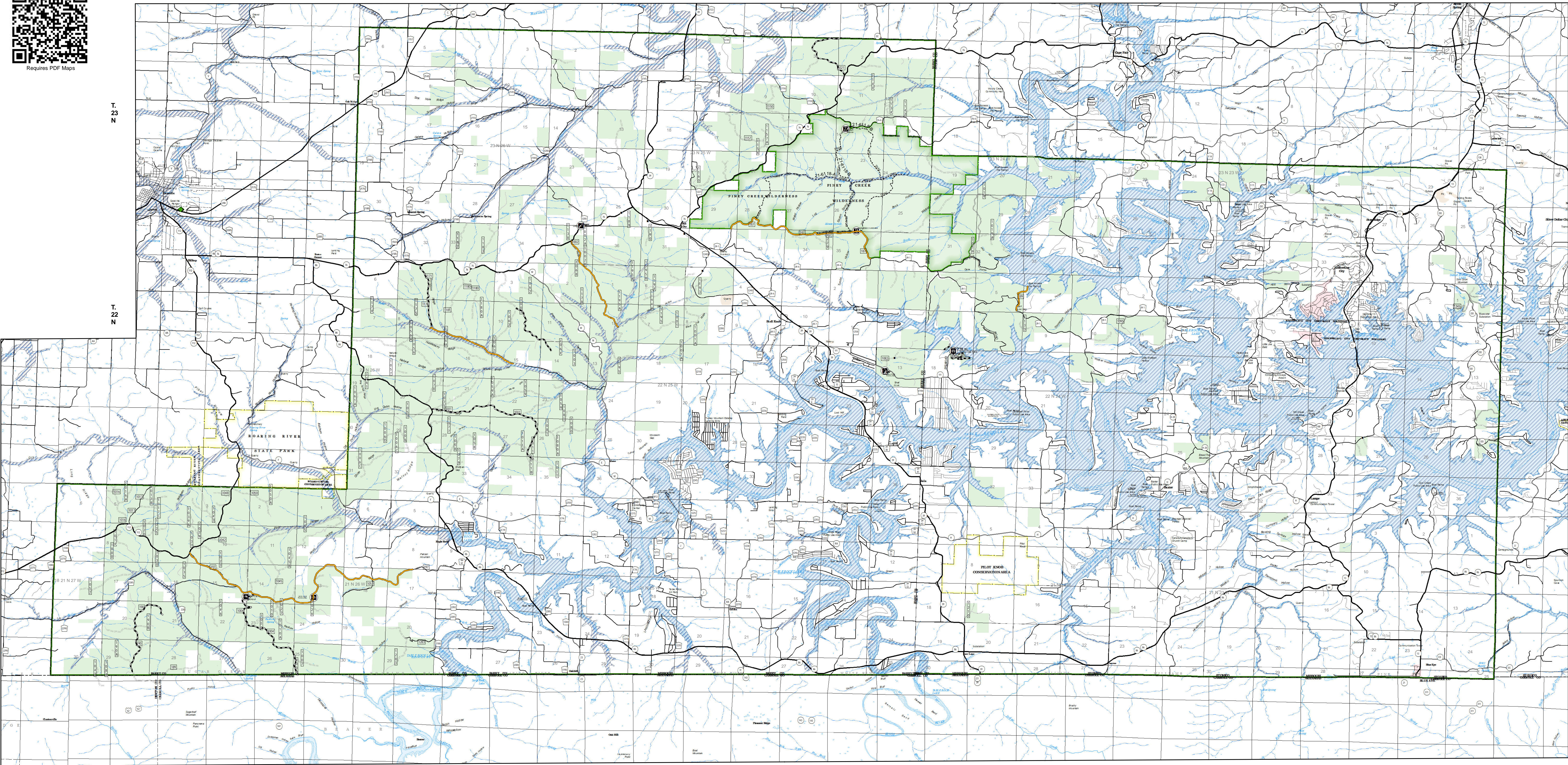
R. 27 W

R. 26 W

R. 25 W

R. 24 W

R. 23 W



USDA Southern Tier Flood 2017
MO-MTF-170313
Assessment Map
Roads & Recreation Sites
May 10, 2017 0700
Branch One
Division Zone 3
Cassville Ranger District
Mark Twain National Forest

Data Current as of 5/9/2017 @ 2130

FS Roads, Zone 3 - Cassville, Needing Assessment = 16.4 Miles

OPERATIONAL MAINTENANCE LEVEL
3 - Suitable for Passenger Cars - 14.9 Miles
4 - Moderate Degree of User Comfort - 1.5 Miles

FS Recreation Sites, Zone 3 - Cassville, Needing Assessment = 7 sites

SITE TYPES
Day Use Area - 4
Observation Site - 1
Trailhead - 2

Assessment Layers

Road Assessment

- Impassable - 0 miles
- Passable with Damage - 17.8 miles
- No damage - 0.2 miles
- Unreported - 16.4 miles

Rec Site Assessment

- Unreported - all sites
- Open/minor damage
- Closed/significant damage

Legend

OPER. MAINT. LEVEL

- 1 - BASIC CUSTODIAL CARE (CLOSED)
- 2 - HIGH CLEARANCE VEHICLES
- 3/4 - SUITABLE FOR PASSENGER CARS

- Campground (1)
- Trailhead (2)
- Observation Site (1)
- Day Use Area (4)
- Non-Motorized Trail
- Gate

- Missouri Numbered Routes
- Missouri Lettered Route
- County Road
- Other Roads
- Private Road
- Railroad

- Mark Twain National Forest
- Channel in Water Area
- Stream - Intermittent
- Stream - Perennial
- Pit
- Quarry or Open Pit Mine
- Sand Area

- Land Subject to Inundation
- Open Water - Perennial
- Open Water - Intermittent
- Flood Hazard
- USDA FOREST SERVICE

North Arrow

1:63,360

0 1 2 3 4 Miles

1 inch = 1 miles

Contour Interval 20-Ft.

NAD 1983 Datum
UTM 15 North