

R 12 W

R 11 W

R 10 W

R 9 W

T 27 N

T 27 N

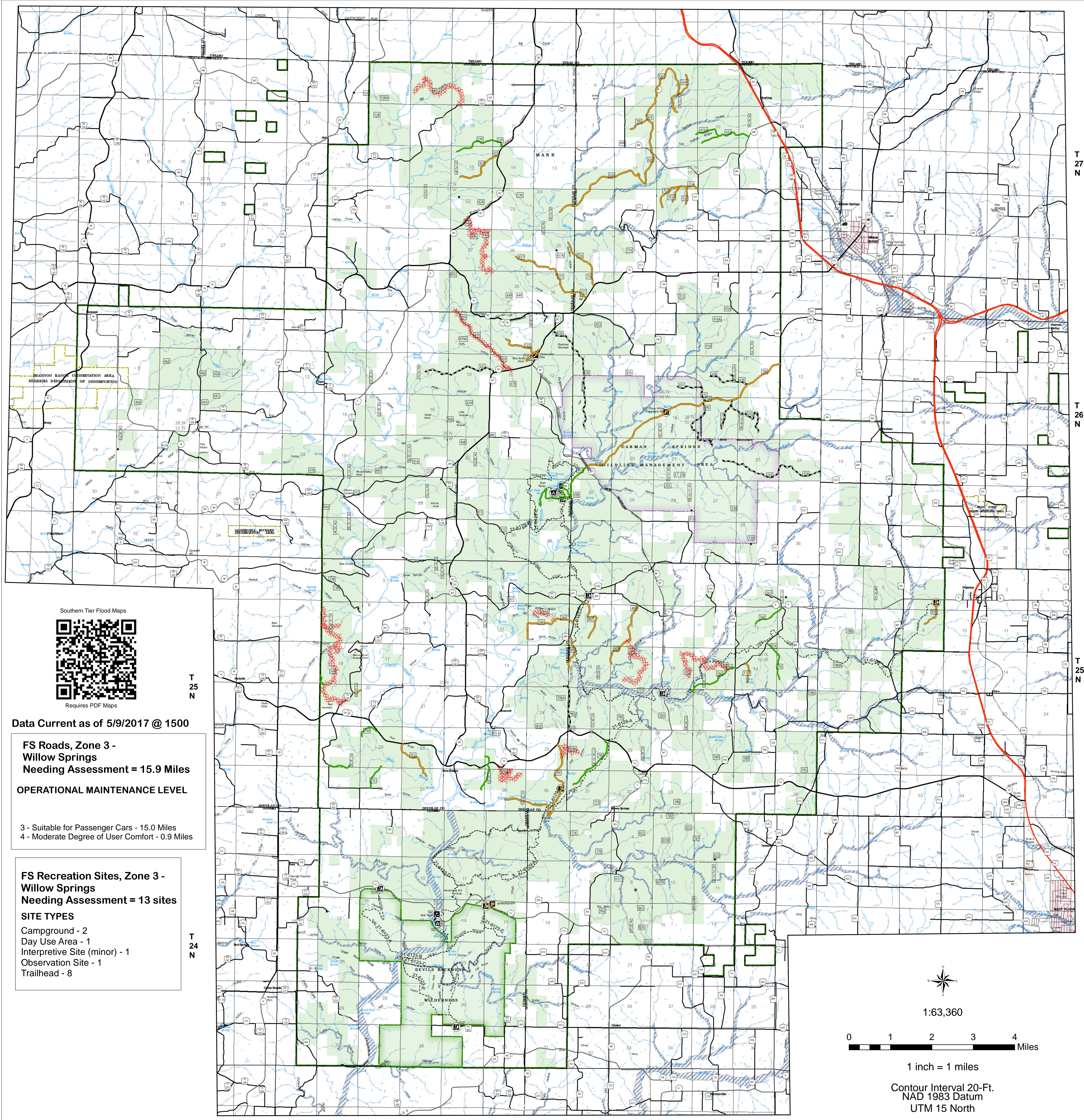
T 26 N

T 26 N

T 25 N

T 25 N

T 24 N



Requires PDF Maps

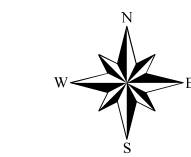
Data Current as of 5/9/2017 @ 1500

FS Roads, Zone 3 - Willow Springs
 Needing Assessment = 15.9 Miles
OPERATIONAL MAINTENANCE LEVEL

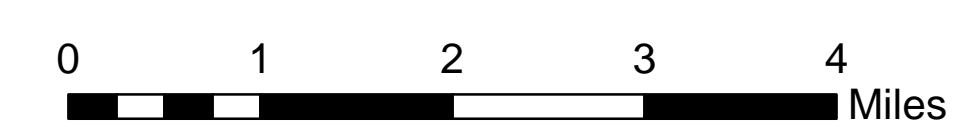
3 - Suitable for Passenger Cars - 15.0 Miles
 4 - Moderate Degree of User Comfort - 0.9 Miles

FS Recreation Sites, Zone 3 - Willow Springs
 Needing Assessment = 13 sites
SITE TYPES

Campground - 2
 Day Use Area - 1
 Interpretive Site (minor) - 1
 Observation Site - 1
 Trailhead - 8



1:63,360



1 inch = 1 miles

Contour Interval 20-Ft.
 NAD 1983 Datum
 UTM 15 North

USDA Southern Tier Flood 2017 MO-MTF-170313

Assessment Map Roads & Recreation Sites

May 10, 2017 0700

Branch One

Division Zone 3
 Willow Springs Ranger District
 Mark Twain National Forest

Assessment Layers

- Passable with Damage - 21.4 miles
- Impassable - 2.3 miles
- No damage - 2.9 miles
- Unreported - 15.9 miles
- Unreported - all sites (13)
- Open/minor damage (0)
- Closed/significant damage (0)

Legend

- Campground (2)
- Trailhead (9)
- Observation Site (1)
- Interpretive Site (Minor) (1)
- Day Use Area (1)
- Campground (1)
- Non-Motorized Trail
- Gate
- Barrier
- OPER_MAINT_LEVEL**
- 1 - BASIC CUSTODIAL CARE (CLOSED)
- 2 - HIGH CLEARANCE VEHICLES
- 3/4 - SUITABLE FOR PASSENGER CARS
- US Numbered Routes
- Missouri Numbered Routes
- Missouri Lettered Route
- County Road
- Other Roads
- Private Road
- Railroad
- Mark Twain National Forest
- Stream - Intermittent
- Stream - Perennial
- Waterfall
- Open Water - Perennial
- Open Water - Intermittent
- Flood Hazard
- USDA FOREST SERVICE
- Quarry or Open Pit Mine
- Sand Area
- Strip Mine