

R. 20 W

R. 19 W

R. 18 W



Southern Tier Flood 2017  
MO-MTF-170313

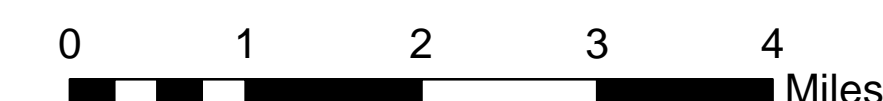


# Assessment Map Trails

May 10, 2017 0700  
Branch One  
Division Zone 3  
Ava Ranger District  
Mark Twain National Forest



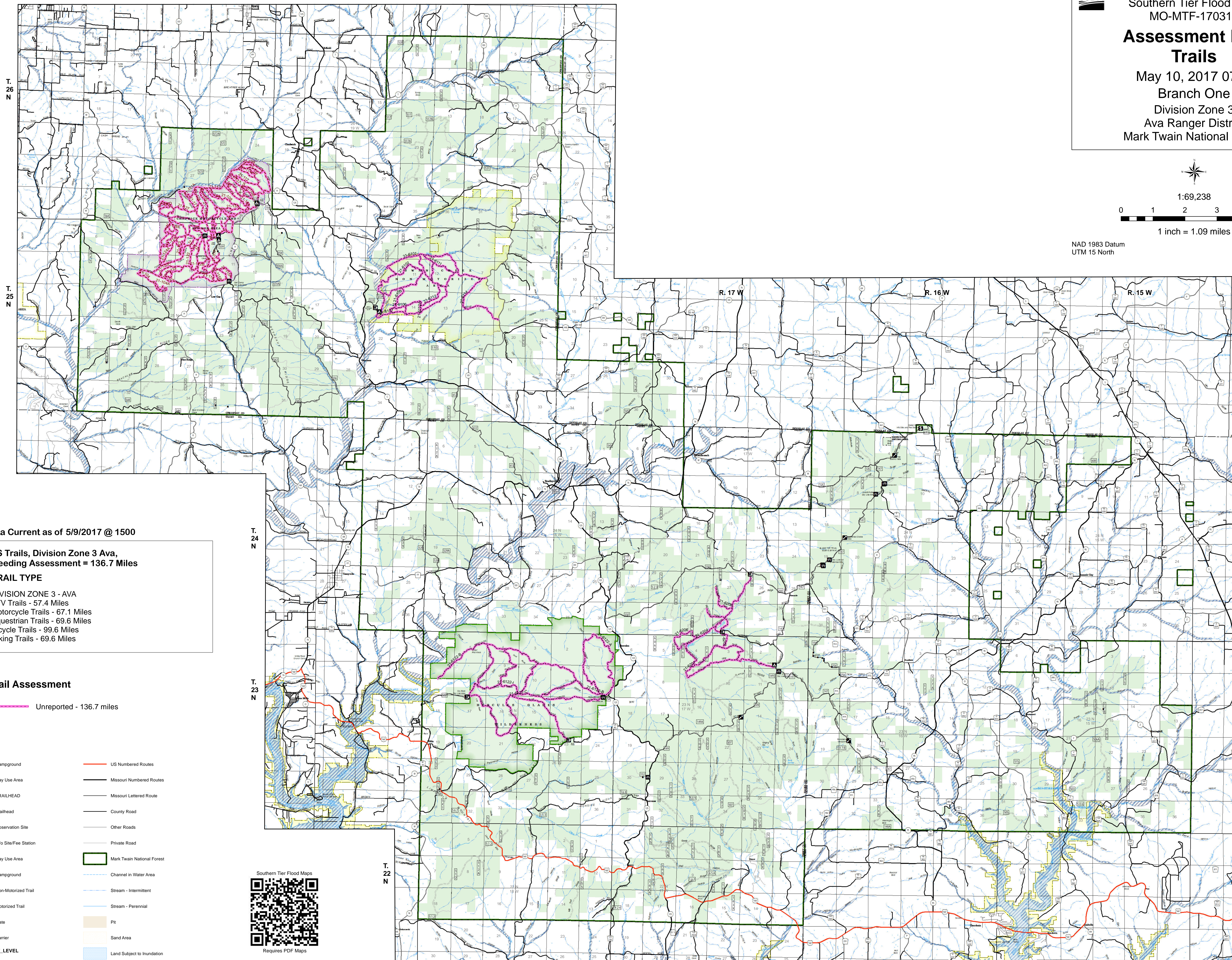
1:69,238



1 inch = 1.09 miles

NAD 1983 Datum  
UTM 15 North

Prepared by:  
Eastern Area IMT  
5/8/2017 2000 hrs



Data Current as of 5/9/2017 @ 1500

**FS Trails, Division Zone 3 Ava,  
Needing Assessment = 136.7 Miles**

### TRAIL TYPE

DIVISION ZONE 3 - AVA  
ATV Trails - 57.4 Miles  
Motorcycle Trails - 67.1 Miles  
Equestrian Trails - 69.6 Miles  
Bicycle Trails - 99.6 Miles  
Hiking Trails - 69.6 Miles

### Trail Assessment

Unreported - 136.7 miles

- Campground
- Day Use Area
- TRAILHEAD
- Trailhead
- Observation Site
- Info Site/Fee Station
- Day Use Area
- Campground
- Non-Motorized Trail
- Motorized Trail
- Gate
- Barrier
- OPER. MAINT. LEVEL**
- 1 - BASIC CUSTODIAL CARE (CLOSED)
- 2 - HIGH CLEARANCE VEHICLES
- 3/4 - SUITABLE FOR PASSENGER CARS
- US Numbered Routes
- Missouri Numbered Routes
- Missouri Lettered Route
- County Road
- Other Roads
- Private Road
- Mark Twain National Forest
- Channel in Water Area
- Stream - Intermittent
- Stream - Perennial
- Pit
- Sand Area
- Land Subject to Inundation
- Open Water - Perennial
- Open Water - Intermittent
- Flood Hazard
- USDA FOREST SERVICE



Requires PDF Maps