

R 12 W

R 11 W

R 10 W

R 9 W

T 27 N

T 27 N

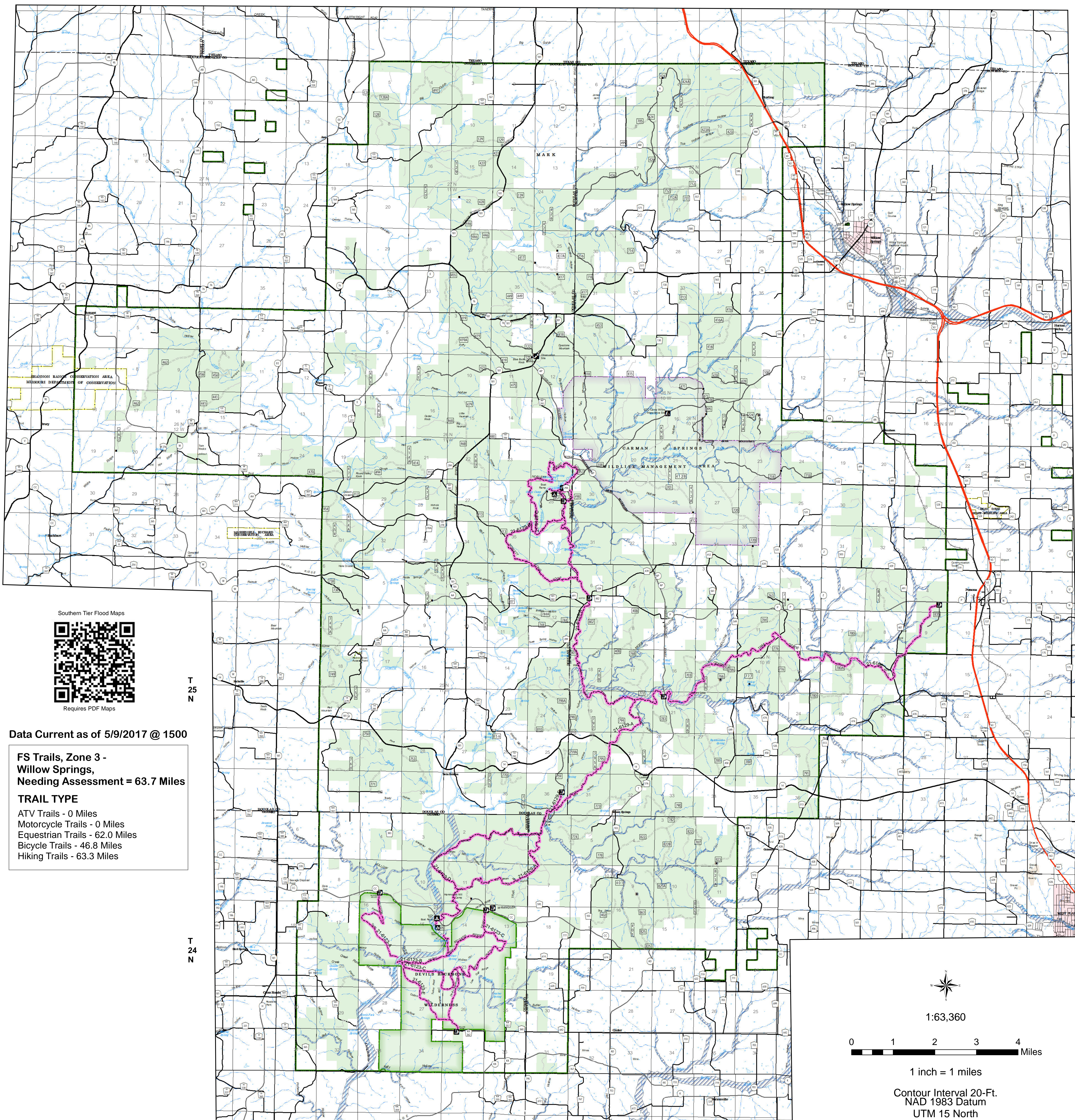
T 26 N

T 26 N

T 25 N

T 25 N

T 24 N

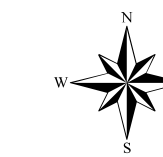


Data Current as of 5/9/2017 @ 1500

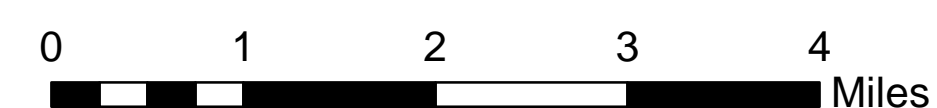
**FS Trails, Zone 3 - Willow Springs, Needing Assessment = 63.7 Miles**

**TRAIL TYPE**

- ATV Trails - 0 Miles
- Motorcycle Trails - 0 Miles
- Equestrian Trails - 62.0 Miles
- Bicycle Trails - 46.8 Miles
- Hiking Trails - 63.3 Miles



1:63,360



1 inch = 1 miles

Contour Interval 20-Ft.  
NAD 1983 Datum  
UTM 15 North

**USDA** Southern Tier Flood 2017  
MO-MTF-170313

**Assessment Map Trails**

May 10, 2017 0700

Branch One

Division Zone 3  
Willow Springs Ranger District  
Mark Twain National Forest



**Assessment Layers**

**Trail Assessment**

Unreported - 63.7 miles (22)

**Legend**

- |                               |                                   |                          |                            |                         |
|-------------------------------|-----------------------------------|--------------------------|----------------------------|-------------------------|
| Campground (2)                | Non-Motorized Trail               | US Numbered Routes       | Mark Twain National Forest | USDA FOREST SERVICE     |
| Trailhead (9)                 | Gate                              | Missouri Numbered Routes | Stream - Intermittent      | Quarry or Open Pit Mine |
| Observation Site (1)          | Barrier                           | Missouri Lettered Route  | Stream - Perennial         | Sand Area               |
| Interpretive Site (Minor) (1) | <b>OPER MAINT LEVEL</b>           | County Road              | Waterfall                  | Strip Mine              |
| Day Use Area (1)              | 1 - BASIC CUSTODIAL CARE (CLOSED) | Other Roads              | Open Water - Perennial     |                         |
| Campground (1)                | 2 - HIGH CLEARANCE VEHICLES       | Private Road             | Open Water - Intermittent  |                         |
|                               | 3/4 - SUITABLE FOR PASSENGER CARS | Railroad                 | Flood Hazard               |                         |