



Requires PDF Maps

R. 27 W

R. 26 W

R. 25 W

R. 24 W

R. 23 W

T. 23 N

T. 22 N

T. 23 N

T. 22 N

T. 21 N

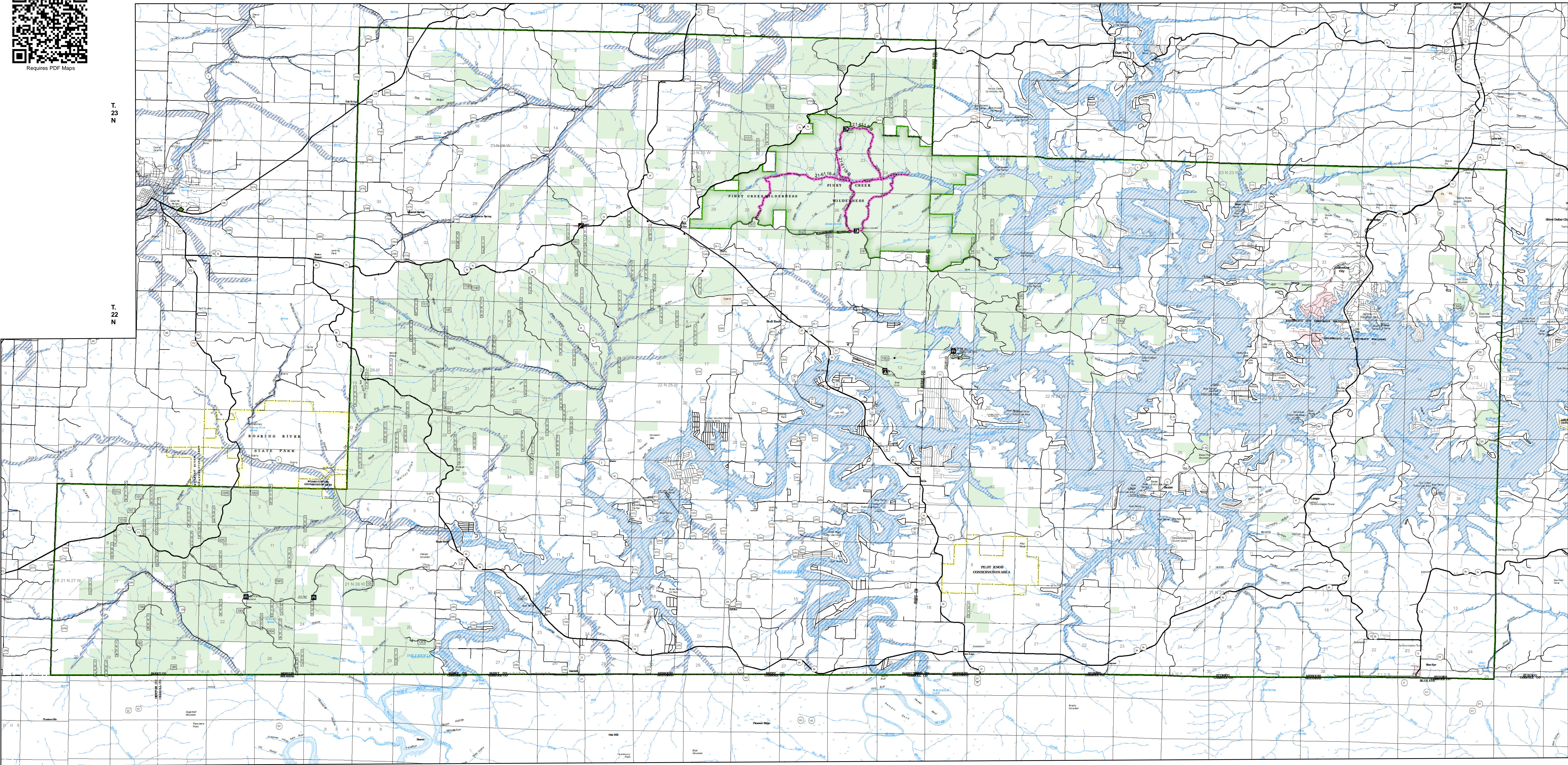
R. 27 W

R. 26 W

R. 25 W

R. 24 W

R. 23 W



Southern Tier Flood 2017  
MO-MTF-170313

# Assessment Map Trails

May 10, 2017 0700

Branch One

Division Zone 3

Cassville Ranger District  
Mark Twain National Forest



Data Current as of 5/9/2017 @ 1500

FS Trails, Zone 3 - Cassville,  
Needing Assessment = 12.1 Miles

### TRAIL TYPE

- ATV Trails - 0 Miles
- Motorcycle Trails - 0 Miles
- Equestrian Trails - 12.1 Miles
- Bicycle Trails - 0 Miles
- Hiking Trails - 12.1 Miles

### Assessment Layers

#### Trail Assessment

Unreported - 12.1 miles

### Legend

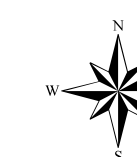
- Campground (1)
- Trailhead (2)
- Observation Site (1)
- Day Use Area (4)
- Non-Motorized Trail
- Gate

#### OPER\_MANT\_LEVEL

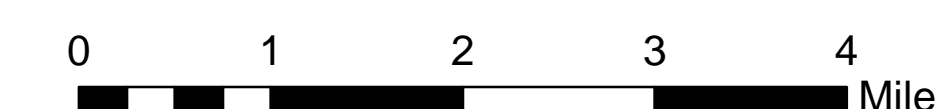
- 1 - BASIC CUSTODIAL CARE (CLOSED)
- 2 - HIGH CLEARANCE VEHICLES
- 3/4 - SUITABLE FOR PASSENGER CARS
- Missouri Numbered Routes
- Missouri Lettered Route
- County Road
- Other Roads
- Private Road
- Railroad

- Mark Twain National Forest
- Channel in Water Area
- Stream - Intermittent
- Stream - Perennial
- Pit
- Quarry or Open Pit Mine
- Sand Area

- Land Subject to Inundation
- Open Water - Perennial
- Open Water - Intermittent
- Flood Hazard
- USDA FOREST SERVICE



1:63,360



1 inch = 1 miles

NAD 1983 Datum  
UTM 15 North