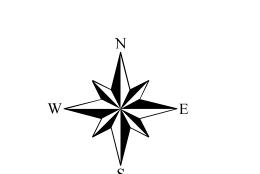


Assessment Map Roads & Recreation Sites

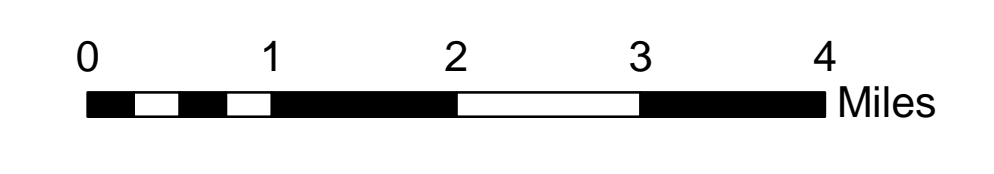
May 12, 2017 0700

Branch Two

Divisions Eleven Point and Current River
Eleven Point/Doniphan Ranger District
Mark Twain National Forest



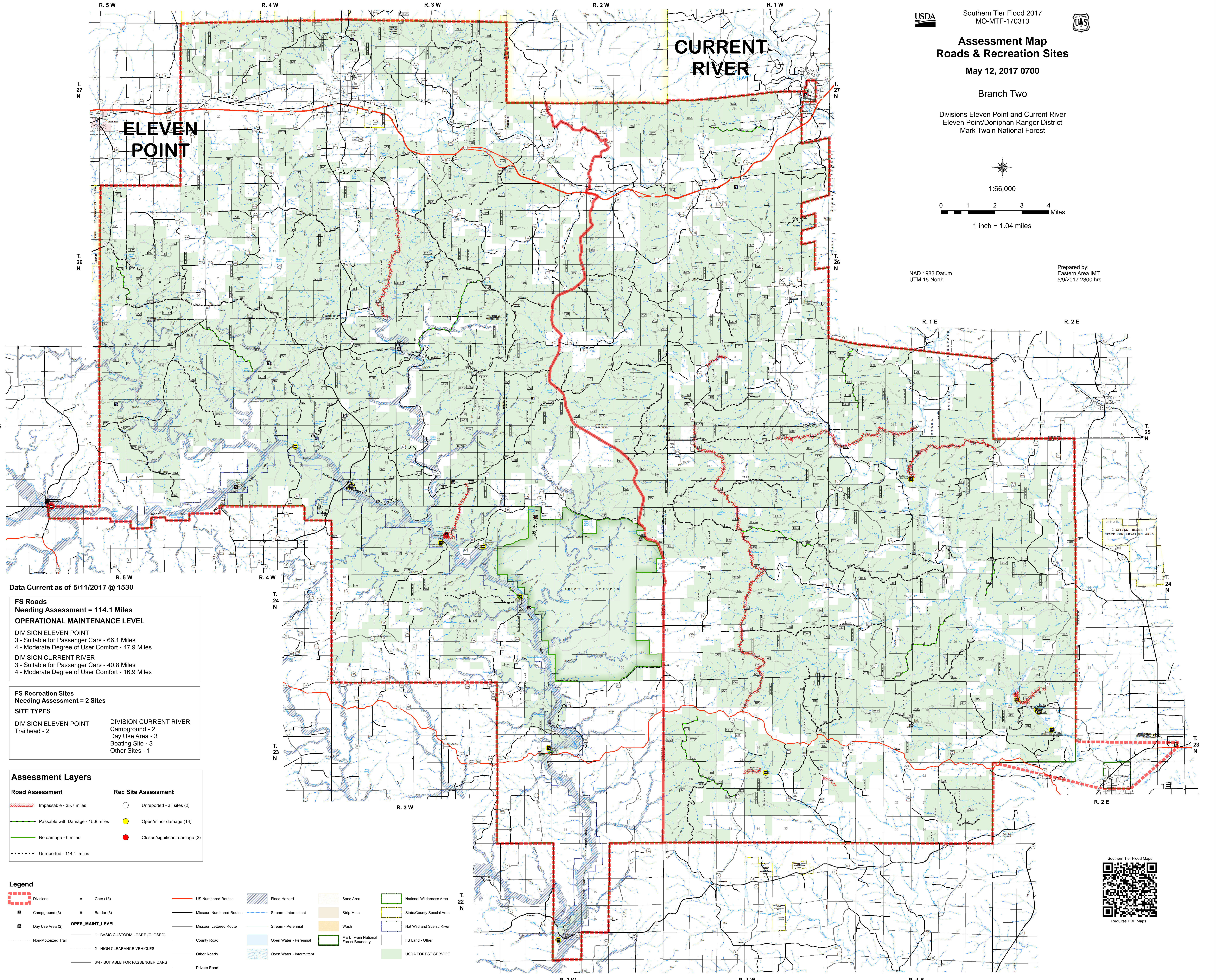
1:66,000



1 inch = 1.04 miles

NAD 1983 Datum
UTM 15 North

Prepared by:
Eastern Area IMT
5/9/2017 2300 hrs



Data Current as of 5/11/2017 @ 1530

FS Roads
Needing Assessment = 114.1 Miles
OPERATIONAL MAINTENANCE LEVEL
DIVISION ELEVEN POINT
3 - Suitable for Passenger Cars - 66.1 Miles
4 - Moderate Degree of User Comfort - 47.9 Miles
DIVISION CURRENT RIVER
3 - Suitable for Passenger Cars - 40.8 Miles
4 - Moderate Degree of User Comfort - 16.9 Miles

FS Recreation Sites
Needing Assessment = 2 Sites
SITE TYPES
DIVISION ELEVEN POINT
Trailhead - 2
DIVISION CURRENT RIVER
Campground - 2
Day Use Area - 3
Boating Site - 3
Other Sites - 1

Assessment Layers

Road Assessment	Rec Site Assessment
Impassible - 35.7 miles	Unreported - all sites (2)
Passable with Damage - 15.8 miles	Open/minor damage (14)
No damage - 0 miles	Closed/significant damage (3)
Unreported - 114.1 miles	

Legend

Divisions	Gate (18)	US Numbered Routes	Flood Hazard	Sand Area	National Wilderness Area
Campground (3)	Barrier (3)	Missouri Numbered Routes	Stream - Intermittent	Strip Mine	State/County Special Area
Day Use Area (2)	OPER_MAINT_LEVEL	Missouri Lettered Route	Stream - Perennial	Wash	Nat Wild and Scenic River
Non-Motorized Trail	1 - BASIC CUSTODIAL CARE (CLOSED)	County Road	Open Water - Perennial	Mark Twain National Forest Boundary	FS Land - Other
	2 - HIGH CLEARANCE VEHICLES	Other Roads	Open Water - Intermittent	USDA FOREST SERVICE	
	3/4 - SUITABLE FOR PASSENGER CARS	Private Road			



Requires PDF Maps