



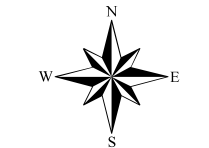
Southern Tier Flood 2017
MO-MTF-170313



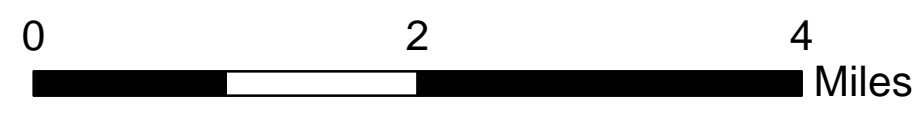
Assessment Map Roads & Recreation Sites

May 12, 2017 0700

Branch One
Division Zone 1
Fredericktown Ranger District
Mark Twain National Forest



1:63,360



1 inch = 1 miles

NAD 1983 Datum
UTM 15 North

Data Current as of 5/11/2017 @ 1530

FS Roads, Zone 1 - Fredericktown RD
Needing Assessment = 0 Miles

OPERATIONAL MAINTENANCE LEVEL

3 - Suitable for Passenger Cars - 0 Miles
4 - Moderate Degree of User Comfort - 0 Miles

Assessment Layers

Road Assessment

- Impassable - 0 miles
- Passable with Damage - 11.0 miles
- No damage - 13.0 miles
- Unreported - 0 miles

Rec Site Assessment

- Unreported - all sites (4)
- Open/minor damage (0)
- Closed/significant damage (0)

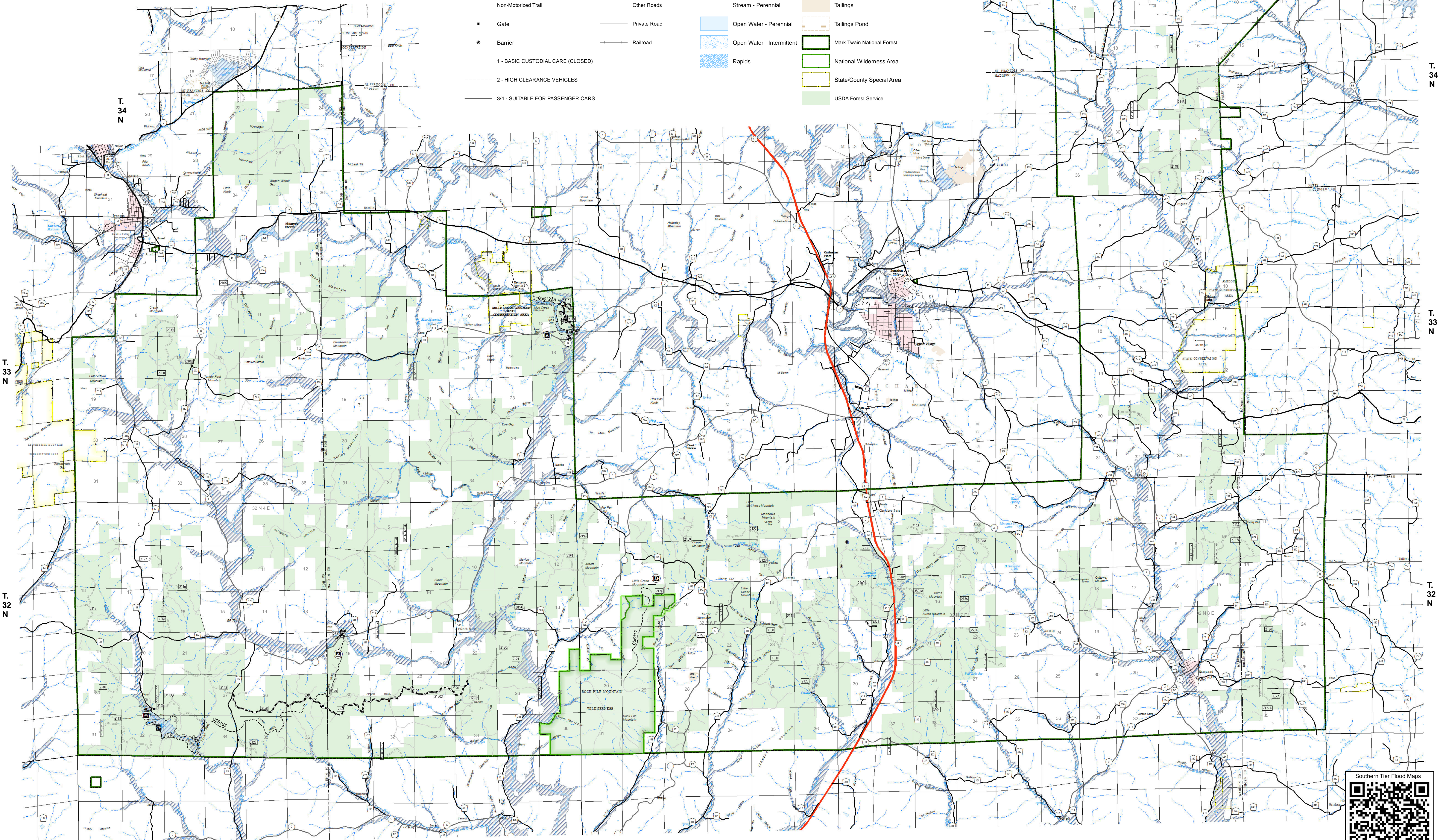
FS Recreation Sites, Zone 1 - Fredericktown RD
Needing Assessment = 4 sites

SITE TYPES

Campground - 2
Day Use Area - 1
Trailhead - 1

Legend

- | | | | |
|-----------------------------------|--------------------------|---------------------------|----------------------------|
| Campground (2) | US Numbered Routes | Flood Hazard | Mine Dump |
| Day Use Area (1) | Missouri Numbered Routes | Canal/Aque/Ditch | Pit |
| Trailhead (1) | Missouri Lettered Route | Dam Carrying Road | Sand Area |
| Day Use Area (1) | County Road | Stream - Intermittent | Strip Mine |
| Non-Motorized Trail | Other Roads | Stream - Perennial | Tailings |
| Gate | Private Road | Open Water - Perennial | Tailings Pond |
| Barrier | Railroad | Open Water - Intermittent | Mark Twain National Forest |
| 1 - BASIC CUSTODIAL CARE (CLOSED) | | Rapids | National Wilderness Area |
| 2 - HIGH CLEARANCE VEHICLES | | | State/County Special Area |
| 3/4 - SUITABLE FOR PASSENGER CARS | | | USDA Forest Service |



R. 4 E

R. 5 E

R. 6 E

R. 7 E

R. 8 E



Southern Tier Flood Maps
Requires PDF Maps