

R 12 W

R 11 W

R 10 W

R 9 W

T 27 N

T 27 N

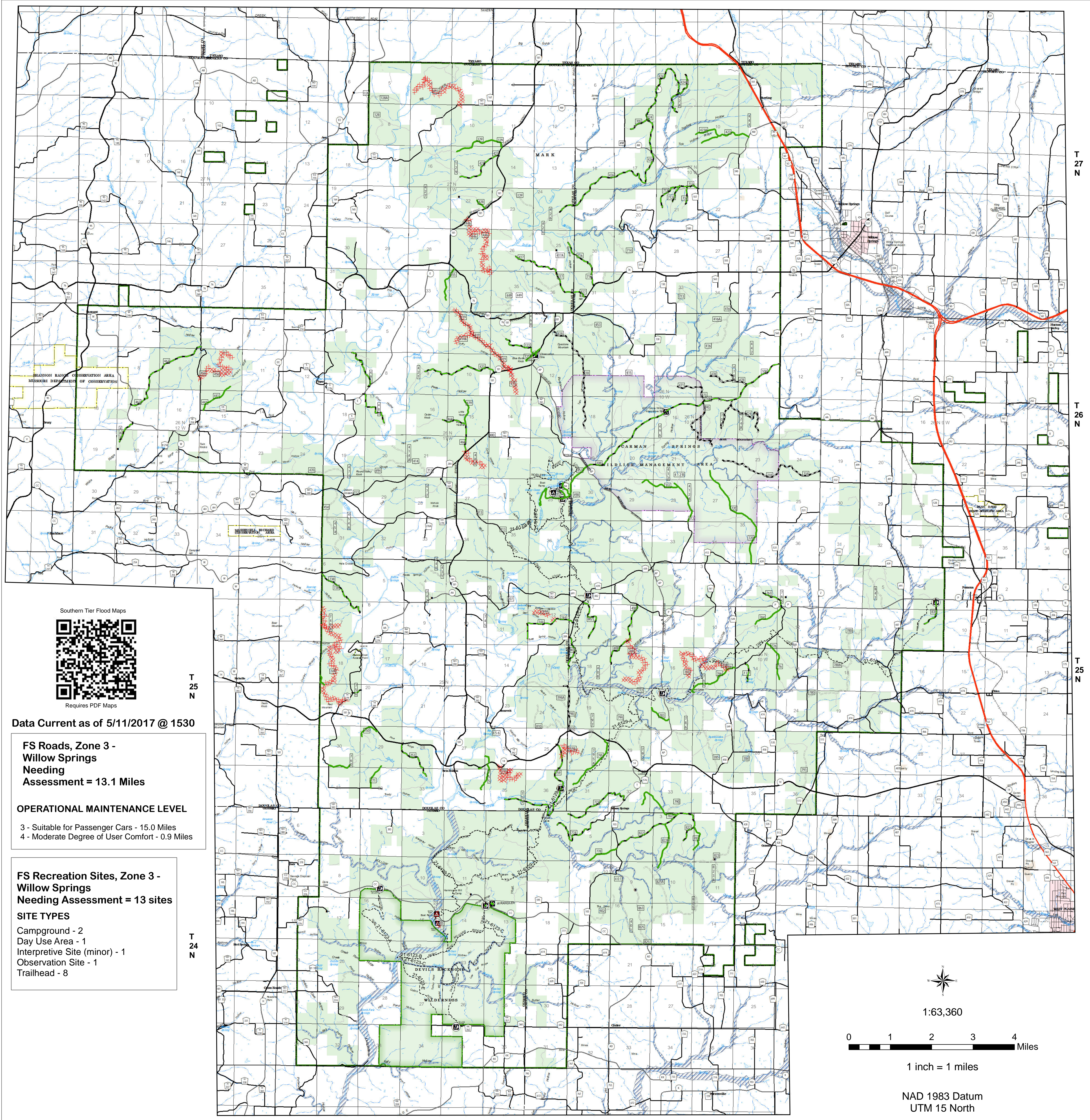
T 26 N

T 26 N

T 25 N

T 25 N

T 24 N



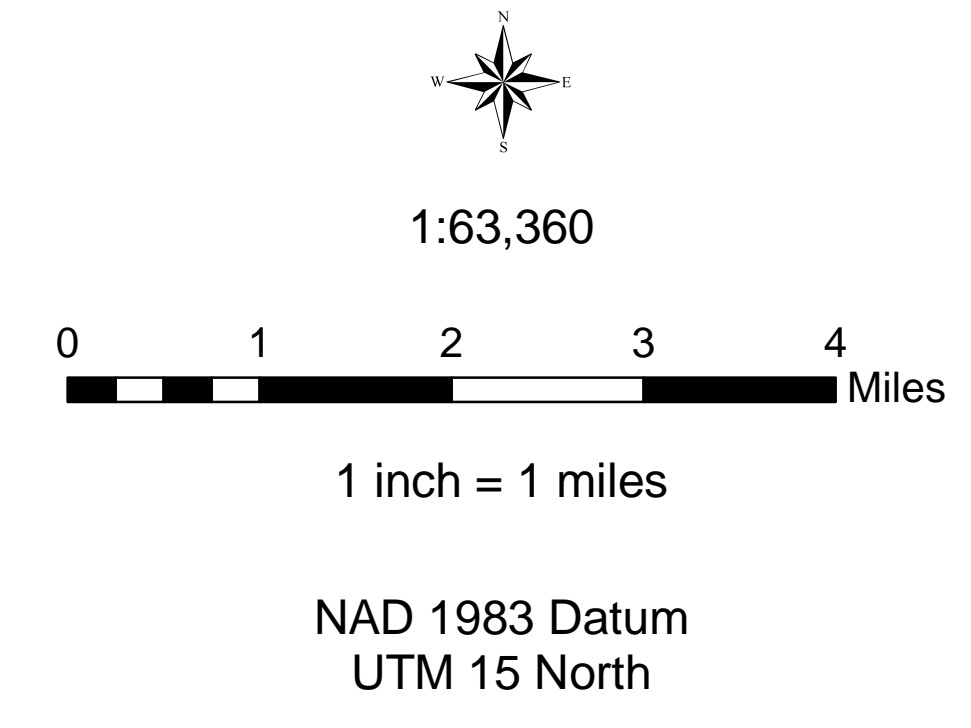
Data Current as of 5/11/2017 @ 1530

FS Roads, Zone 3 - Willow Springs
Needing Assessment = 13.1 Miles

OPERATIONAL MAINTENANCE LEVEL
 3 - Suitable for Passenger Cars - 15.0 Miles
 4 - Moderate Degree of User Comfort - 0.9 Miles

FS Recreation Sites, Zone 3 - Willow Springs
Needing Assessment = 13 sites

SITE TYPES
 Campground - 2
 Day Use Area - 1
 Interpretive Site (minor) - 1
 Observation Site - 1
 Trailhead - 8



USDA Southern Tier Flood 2017 MO-MTF-170313

Assessment Map Roads & Recreation Sites

May 12, 2017 0700

Branch One

Division Zone 3
 Willow Springs Ranger District
 Mark Twain National Forest

Assessment Layers

XXXXXX	Impassable - 3.2 miles	○	Unreported - all sites (13)
—	Passable with Damage - 19.8 miles	●	Open/minor damage (0)
—	No damage - 6.4 miles	●	Closed/significant damage (0)
---	Unreported - 13.1 miles		

Legend

▲	Campground (2)	---	Non-Motorized Trail
■	Trailhead (9)	▪	Gate (31)
■	Observation Site (1)	●	Barrier (5)
▲	Interpretive Site (Minor) (1)		OPER_MAINT_LEVEL
■	Day Use Area (1)	---	1 - BASIC CUSTODIAL CARE (CLOSED)
▲	Campground (1)	---	2 - HIGH CLEARANCE VEHICLES
		---	3/4 - SUITABLE FOR PASSENGER CARS

—	US Numbered Routes	▨	Flood Hazard	□	Sand Area
—	Missouri Numbered Routes	—	Stream - Intermittent	□	Strip Mine
—	Missouri Lettered Route	—	Stream - Perennial	□	Mark Twain National Forest
—	County Road	—	Waterfall	□	National Wilderness Area
—	Other Roads	—	Open Water - Perennial	□	State/County Special Area
—	Private Road	—	Open Water - Intermittent	□	FS Spec Mgt/Rec Area
—	Railroad	—	Quarry or Open Pit Mine	□	USDA Forest Service