



Southern Tier Flood 2017  
MO-MTF-170313



# Assessment Map Trails

May 12, 2017 0700

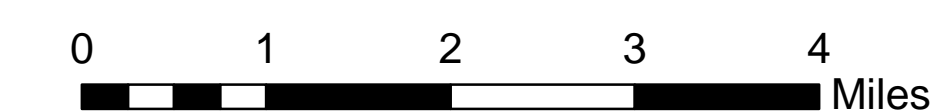
Branch Two

Divisions Eleven Point and Current River

Eleven Point/Doniphan Ranger District  
Mark Twain National Forest



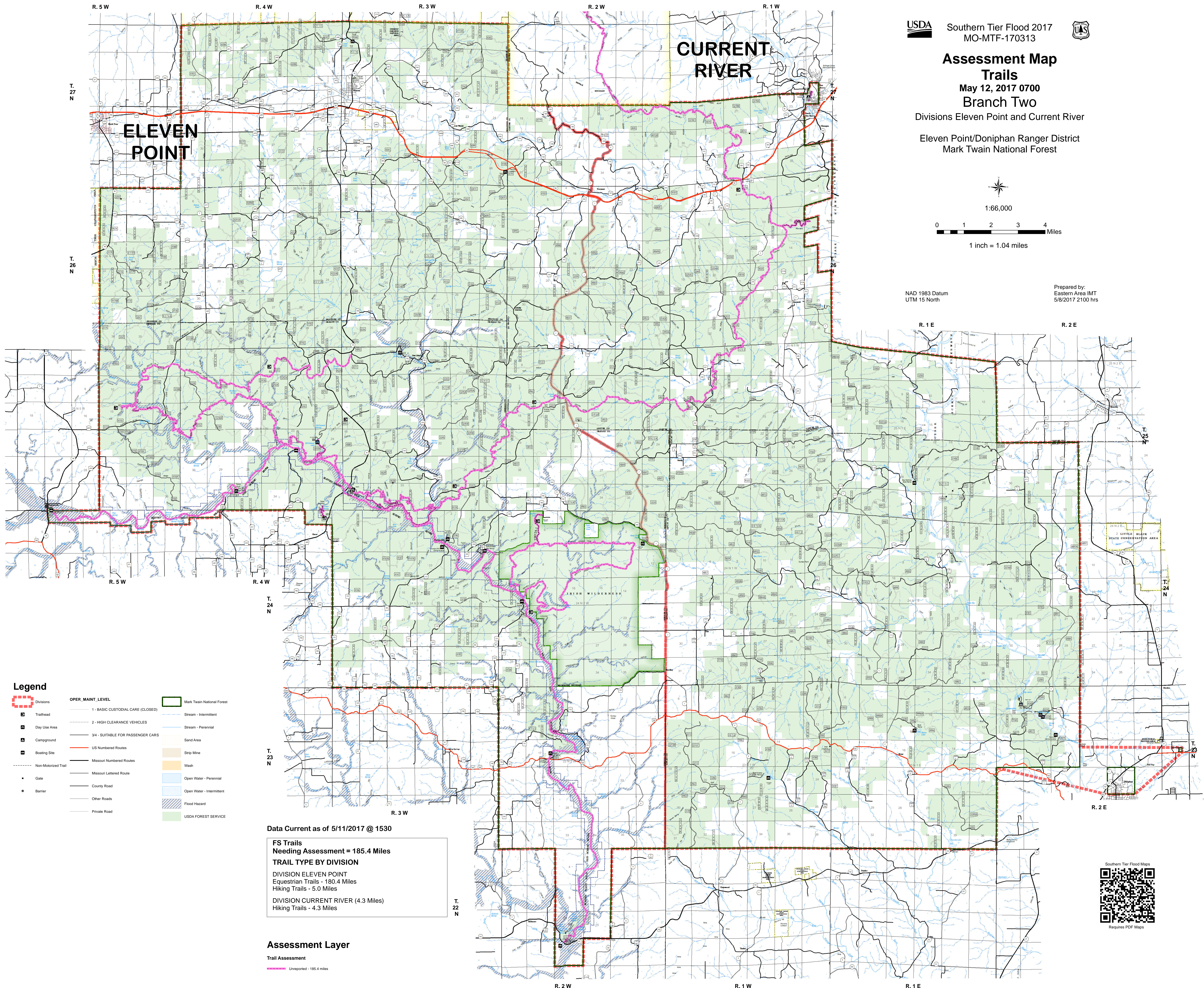
1:66,000



1 inch = 1.04 miles

NAD 1983 Datum  
UTM 15 North

Prepared by:  
Eastern Area IMT  
5/8/2017 2100 hrs



### Legend

- |                     |                                   |                            |
|---------------------|-----------------------------------|----------------------------|
| Divisions           | <b>OPER. MAINT. LEVEL</b>         | Mark Twain National Forest |
| Trailhead           | 1 - BASIC CUSTODIAL CARE (CLOSED) | Stream - Intermittent      |
| Day Use Area        | 2 - HIGH CLEARANCE VEHICLES       | Stream - Perennial         |
| Campground          | 3/4 - SUITABLE FOR PASSENGER CARS | Sand Area                  |
| Boating Site        | US Numbered Routes                | Strip Mine                 |
| Non-Motorized Trail | Missouri Numbered Routes          | Wash                       |
| Gate                | Missouri Lettered Route           | Open Water - Perennial     |
| Barrier             | County Road                       | Open Water - Intermittent  |
|                     | Other Roads                       | Flood Hazard               |
|                     | Private Road                      | USDA FOREST SERVICE        |

Data Current as of 5/11/2017 @ 1530

**FS Trails  
Needing Assessment = 185.4 Miles**

#### TRAIL TYPE BY DIVISION

DIVISION ELEVEN POINT  
Equestrian Trails - 180.4 Miles  
Hiking Trails - 5.0 Miles

DIVISION CURRENT RIVER (4.3 Miles)  
Hiking Trails - 4.3 Miles

#### Assessment Layer

Trail Assessment  
 Unreported - 185.4 miles

