

R 12 W

R 11 W

R 10 W

R 9 W

T 27 N

T 27 N

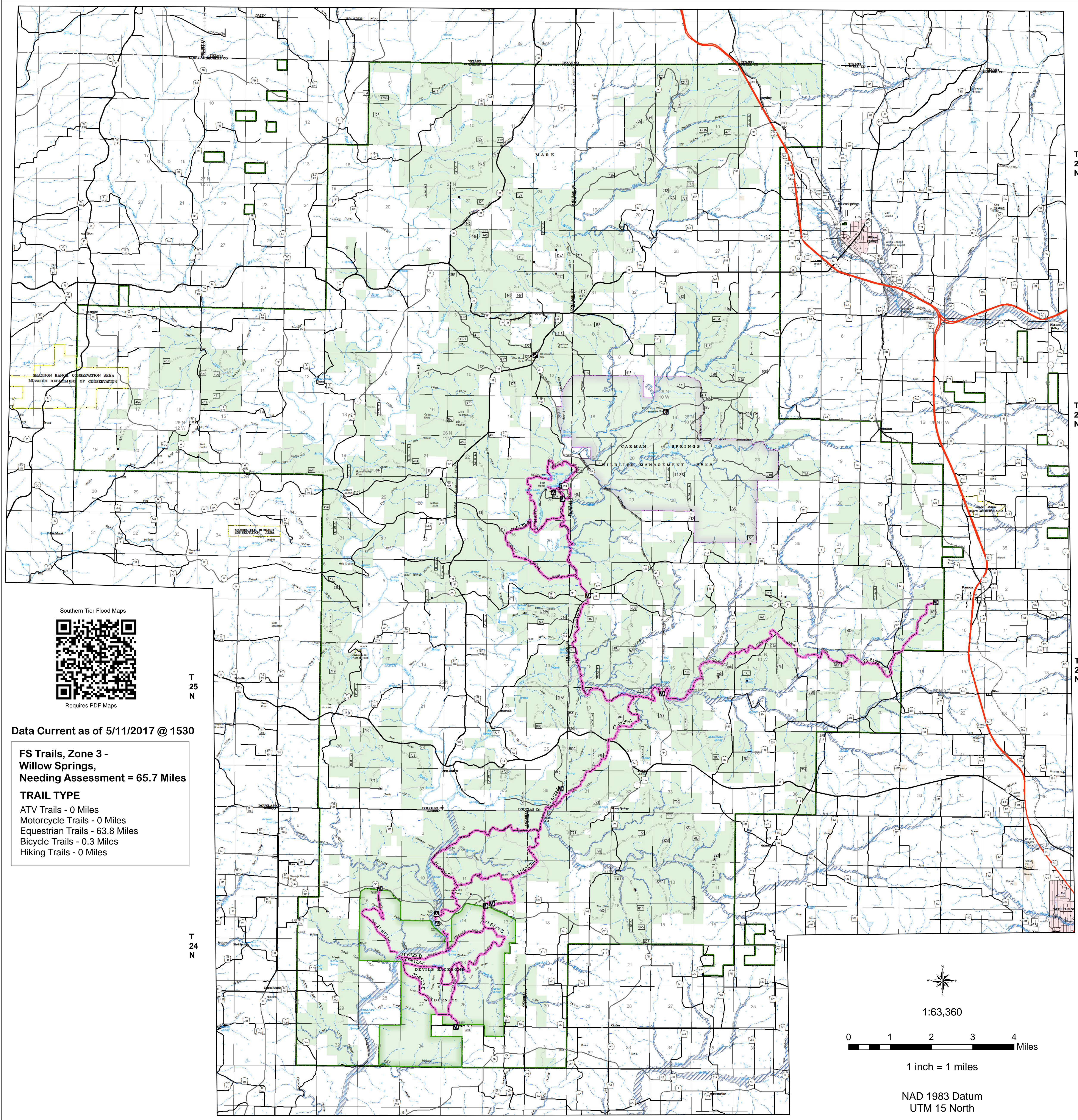
T 26 N

T 26 N

T 25 N

T 25 N

T 24 N



Data Current as of 5/11/2017 @ 1530

**FS Trails, Zone 3 - Willow Springs, Needing Assessment = 65.7 Miles**

**TRAIL TYPE**  
 ATV Trails - 0 Miles  
 Motorcycle Trails - 0 Miles  
 Equestrian Trails - 63.8 Miles  
 Bicycle Trails - 0.3 Miles  
 Hiking Trails - 0 Miles

USDA Southern Tier Flood 2017 MO-MTF-170313

**Assessment Map Trails**

May 12, 2017 0700

Branch One  
 Division Zone 3  
 Willow Springs Ranger District  
 Mark Twain National Forest

**Assessment Layers**

**Trail Assessment**

Unreported - 65.7 miles (25)

**Legend**

- |                               |                                   |                          |                           |                         |                            |
|-------------------------------|-----------------------------------|--------------------------|---------------------------|-------------------------|----------------------------|
| Campground (2)                | Non-Motorized Trail               | US Numbered Routes       | Flood Hazard              | Quarry or Open Pit Mine | Mark Twain National Forest |
| Trailhead (9)                 | Gate (31)                         | Missouri Numbered Routes | Stream - Intermittent     | Sand Area               | National Wilderness Area   |
| Observation Site (1)          | Barrier (5)                       | Missouri Lettered Route  | Stream - Perennial        | Strip Mine              | State/County Special Area  |
| Interpretive Site (Minor) (1) | <b>OPER_MAINT_LEVEL</b>           | County Road              | Waterfall                 |                         | FS Spec Mgt/Rec Area       |
| Day Use Area (1)              | 1 - BASIC CUSTODIAL CARE (CLOSED) | Other Roads              | Open Water - Perennial    |                         | USDA Forest Service        |
| Campground (1)                | 2 - HIGH CLEARANCE VEHICLES       | Private Road             | Open Water - Intermittent |                         |                            |
|                               | 3/4 - SUITABLE FOR PASSENGER CARS | Railroad                 |                           |                         |                            |