

R 12 W

R 11 W

R 10 W

R 9 W

T 27 N

T 27 N

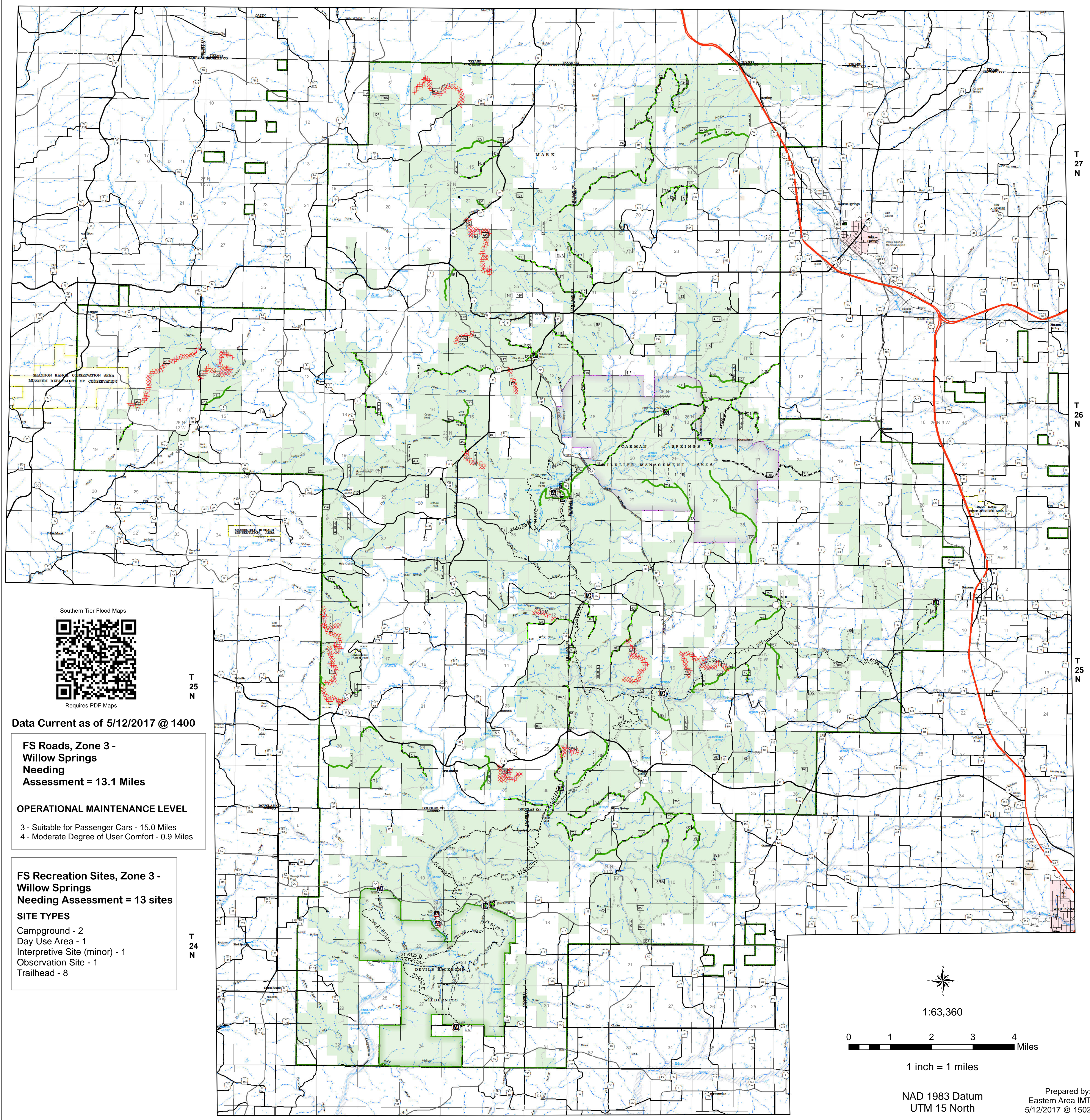
T 26 N

T 26 N

T 25 N

T 25 N

T 24 N



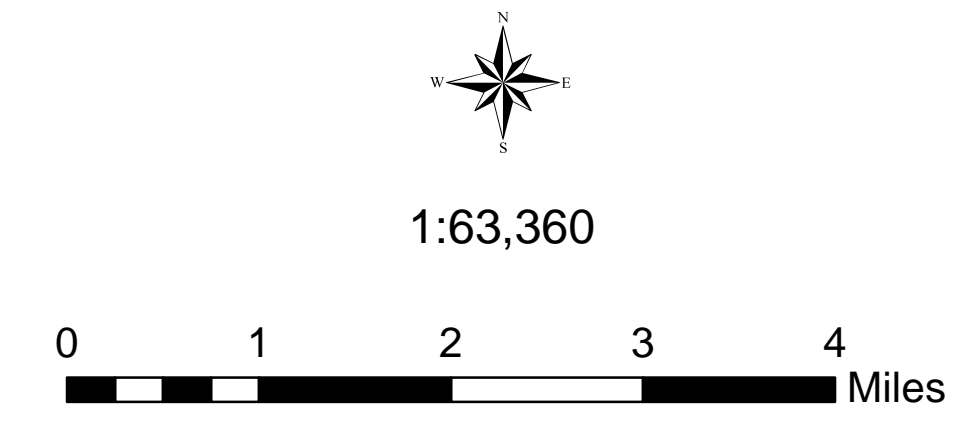
Data Current as of 5/12/2017 @ 1400

FS Roads, Zone 3 - Willow Springs
Needing Assessment = 13.1 Miles

OPERATIONAL MAINTENANCE LEVEL
 3 - Suitable for Passenger Cars - 15.0 Miles
 4 - Moderate Degree of User Comfort - 0.9 Miles

FS Recreation Sites, Zone 3 - Willow Springs
Needing Assessment = 13 sites

SITE TYPES
 Campground - 2
 Day Use Area - 1
 Interpretive Site (minor) - 1
 Observation Site - 1
 Trailhead - 8



Prepared by:
 Eastern Area IMT
 5/12/2017 @ 1502

USDA Southern Tier Flood 2017
 MO-MTF-170313

**Assessment Map
 Roads & Recreation Sites**

May 13, 2017 0700
 Branch One

Division Zone 3
 Willow Springs Ranger District
 Mark Twain National Forest

Assessment Layers

Impassable - 3.2 miles	Unreported - all sites (13)
Passable with Damage - 19.8 miles	Open/minor damage (0)
No damage - 6.4 miles	Closed/significant damage (0)
Unreported - 13.1 miles	

Legend

Campground (2)	Non-Motorized Trail
Trailhead (9)	Gate (31)
Observation Site (1)	Barrier (5)
Interpretive Site (Minor) (1)	OPER_MAINT_LEVEL
Day Use Area (1)	1 - BASIC CUSTODIAL CARE (CLOSED)
Campground (1)	2 - HIGH CLEARANCE VEHICLES
	3/4 - SUITABLE FOR PASSENGER CARS

US Numbered Routes	Flood Hazard	Sand Area
Missouri Numbered Routes	Stream - Intermittent	Strip Mine
Missouri Lettered Route	Stream - Perennial	Mark Twain National Forest
County Road	Waterfall	National Wilderness Area
Other Roads	Open Water - Perennial	State/County Special Area
Private Road	Open Water - Intermittent	FS Spec Mgt/Rec Area
Railroad	Quarry or Open Pit Mine	USDA Forest Service