



Southern Tier Flood 2017
MO-MTF-170313



Assessment Map Trails

May 13, 2017 0700

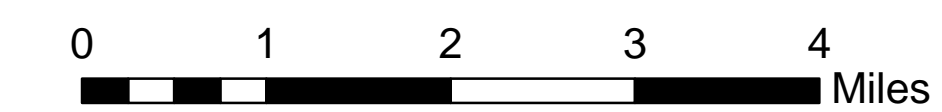
Branch Two

Divisions Eleven Point and Current River

Eleven Point/Doniphan Ranger District
Mark Twain National Forest



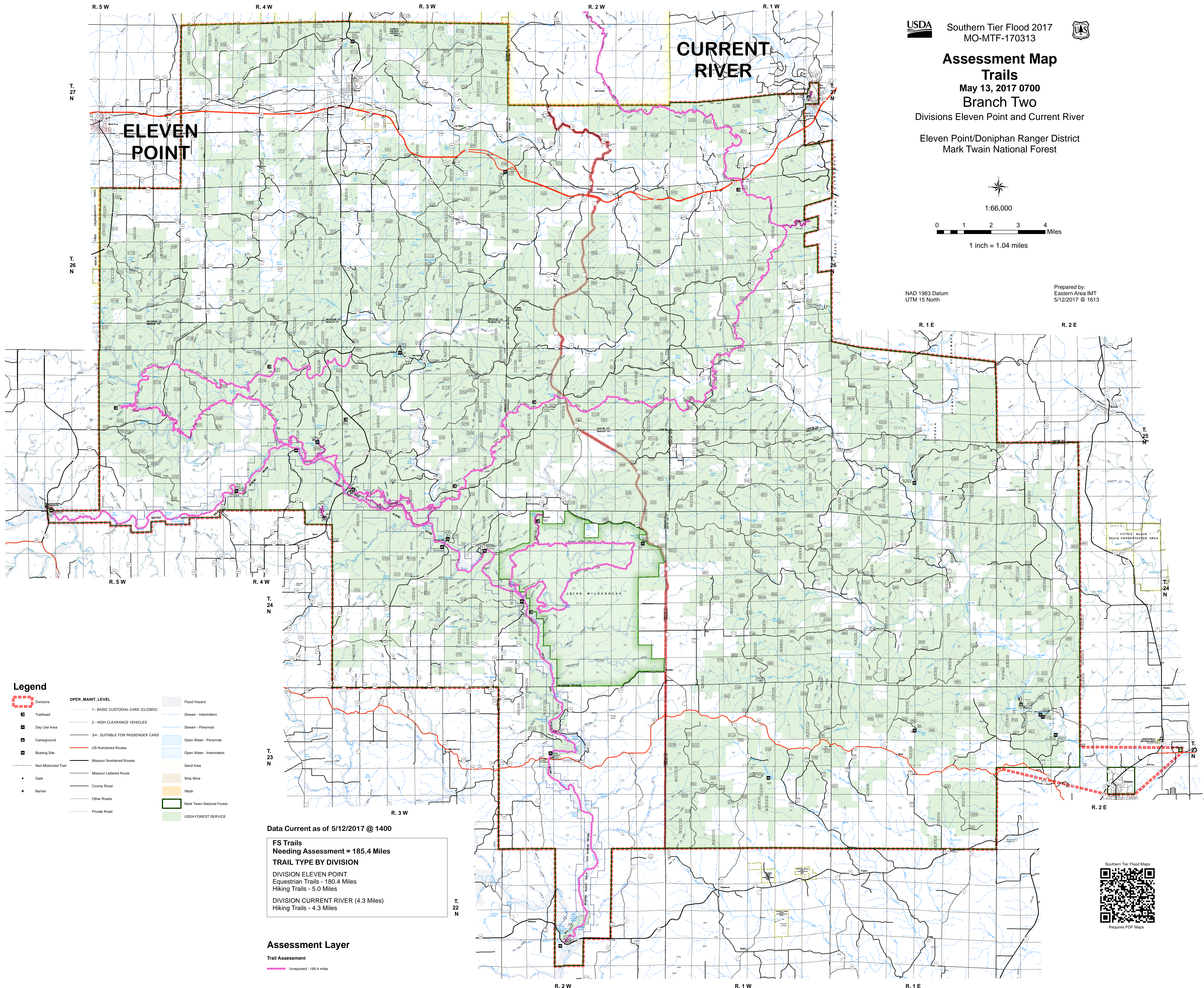
1:66,000



1 inch = 1.04 miles

NAD 1983 Datum
UTM 15 North

Prepared by:
Eastern Area IMT
5/12/2017 @ 1613



Legend

- | | | |
|---------------------|-----------------------------------|----------------------------|
| Divisions | OPER. MAINT. LEVEL | Flood Hazard |
| Trailhead | 1 - BASIC CUSTODIAL CARE (CLOSED) | Stream - Intermittent |
| Day Use Area | 2 - HIGH CLEARANCE VEHICLES | Stream - Perennial |
| Campground | 3/4 - SUITABLE FOR PASSENGER CARS | Open Water - Perennial |
| Boating Site | US Numbered Routes | Open Water - Intermittent |
| Non-Motorized Trail | Missouri Numbered Routes | Sand Area |
| Gate | Missouri Lettered Route | Strip Mine |
| Barrier | County Road | Wash |
| | Other Roads | Mark Twain National Forest |
| | Private Road | USDA FOREST SERVICE |

Data Current as of 5/12/2017 @ 1400

**FS Trails
Needing Assessment = 185.4 Miles**

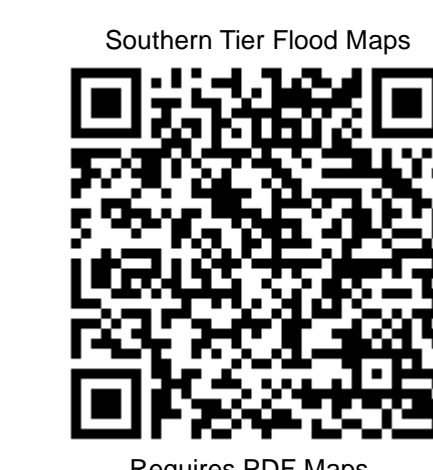
TRAIL TYPE BY DIVISION

DIVISION ELEVEN POINT
Equestrian Trails - 180.4 Miles
Hiking Trails - 5.0 Miles

DIVISION CURRENT RIVER (4.3 Miles)
Hiking Trails - 4.3 Miles

Assessment Layer

Trail Assessment
 Unreported - 185.4 miles



Requires PDF Maps