



Requires PDF Maps

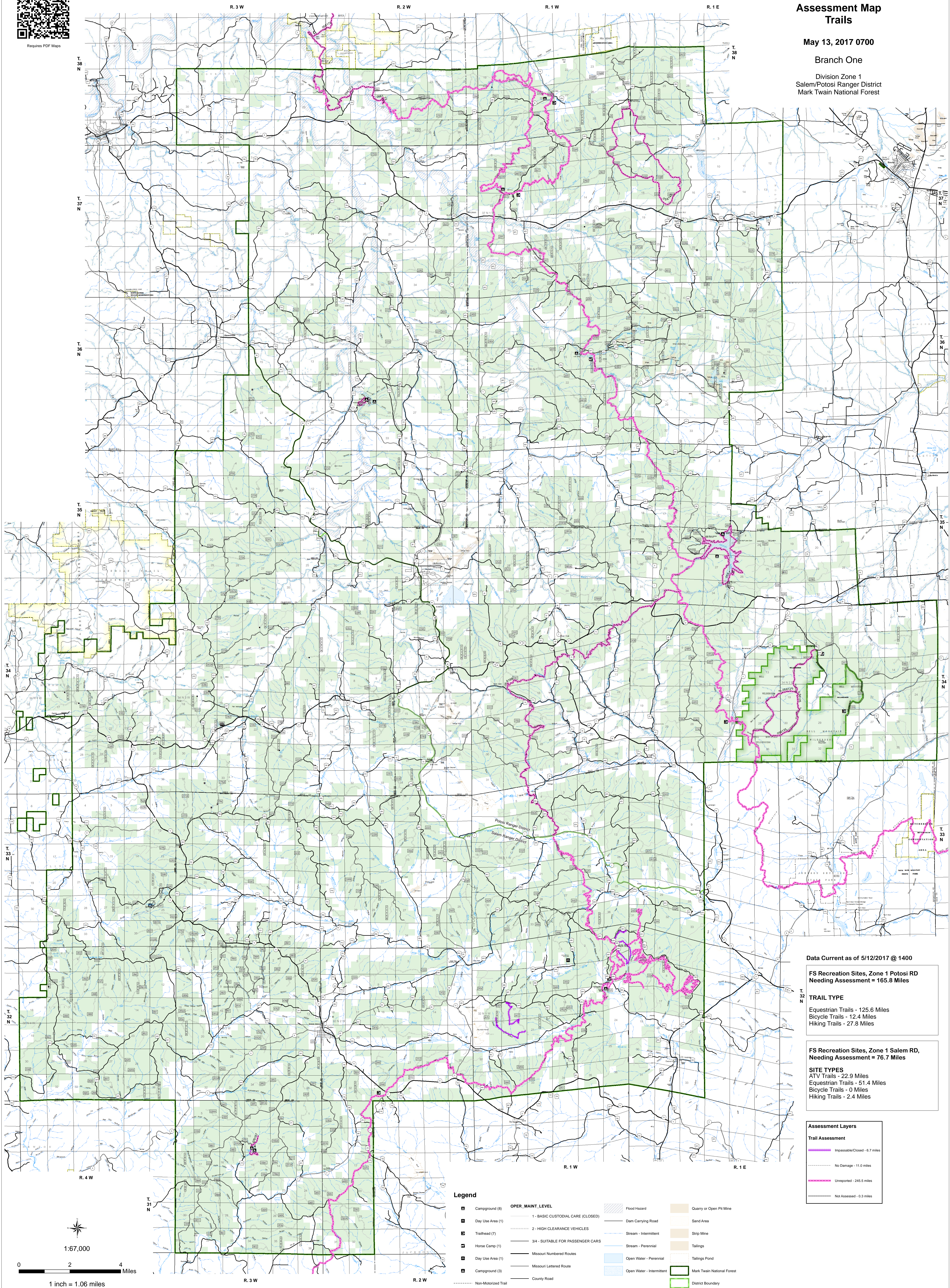


Assessment Map Trails

May 13, 2017 0700

Branch One

Division Zone 1
Salem/Potosi Ranger District
Mark Twain National Forest



Data Current as of 5/12/2017 @ 1400

FS Recreation Sites, Zone 1 Potosi RD
Needing Assessment = 165.8 Miles

TRAIL TYPE

Equestrian Trails - 125.6 Miles
Bicycle Trails - 12.4 Miles
Hiking Trails - 27.8 Miles

FS Recreation Sites, Zone 1 Salem RD,
Needing Assessment = 76.7 Miles

SITE TYPES

ATV Trails - 22.9 Miles
Equestrian Trails - 51.4 Miles
Bicycle Trails - 0 Miles
Hiking Trails - 2.4 Miles

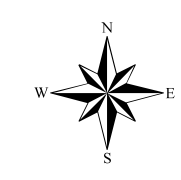
Assessment Layers

Trail Assessment

- Impassable/Closed - 6.7 miles
- No Damage - 11.0 miles
- Unreported - 245.5 miles
- Not Assessed - 0.3 miles

Legend

- | | | | | | | | |
|--|---------------------|--|-----------------------------------|--|---------------------------|--|----------------------------|
| | Campground (8) | | 1 - BASIC CUSTODIAL CARE (CLOSED) | | Flood Hazard | | Quarry or Open Pit Mine |
| | Day Use Area (1) | | 2 - HIGH CLEARANCE VEHICLES | | Dam Carrying Road | | Sand Area |
| | Trailhead (7) | | 3/4 - SUITABLE FOR PASSENGER CARS | | Stream - Intermittent | | Strip Mine |
| | Horse Camp (1) | | Missouri Numbered Routes | | Stream - Perennial | | Tailings |
| | Day Use Area (1) | | Missouri Lettered Routes | | Open Water - Perennial | | Tailings Pond |
| | Campground (3) | | County Road | | Open Water - Intermittent | | Mark Twain National Forest |
| | Non-Motorized Trail | | Other Roads | | District Boundary | | USDA FOREST SERVICE |
| | Gate | | Private Road | | | | |
| | Barrier | | Railroad | | | | |



1:67,000

0 2 4 Miles

1 inch = 1.06 miles