

R. 20 W

R. 19 W

R. 18 W



Southern Tier Flood 2017  
MO-MTF-170313



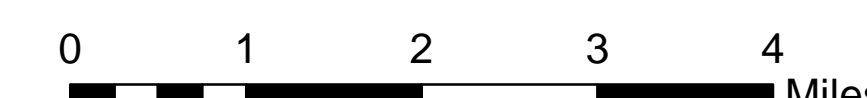
# Assessment Map Trails

May 13, 2017 0700

Branch One  
Division Zone 3  
Ava Ranger District  
Mark Twain National Forest



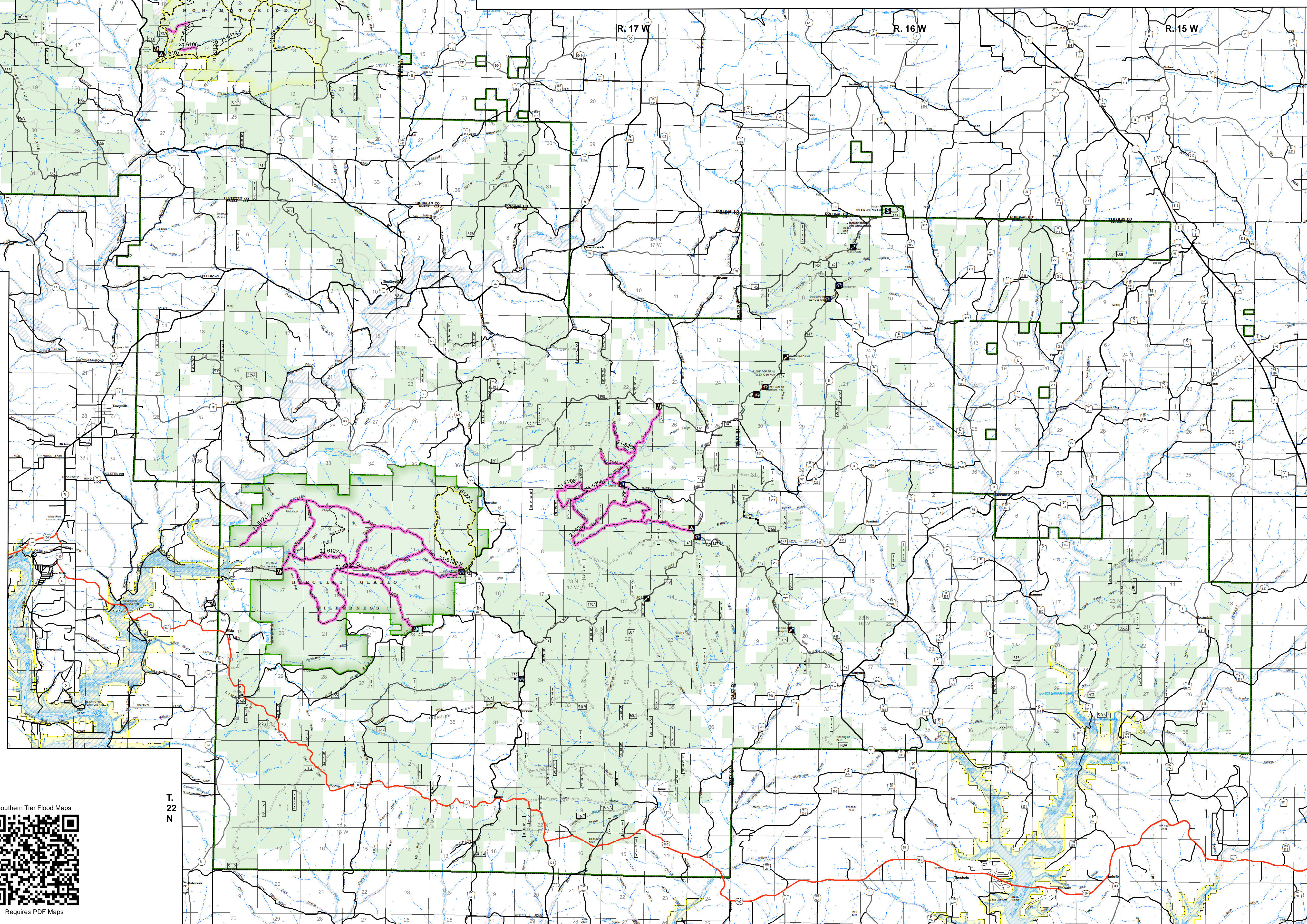
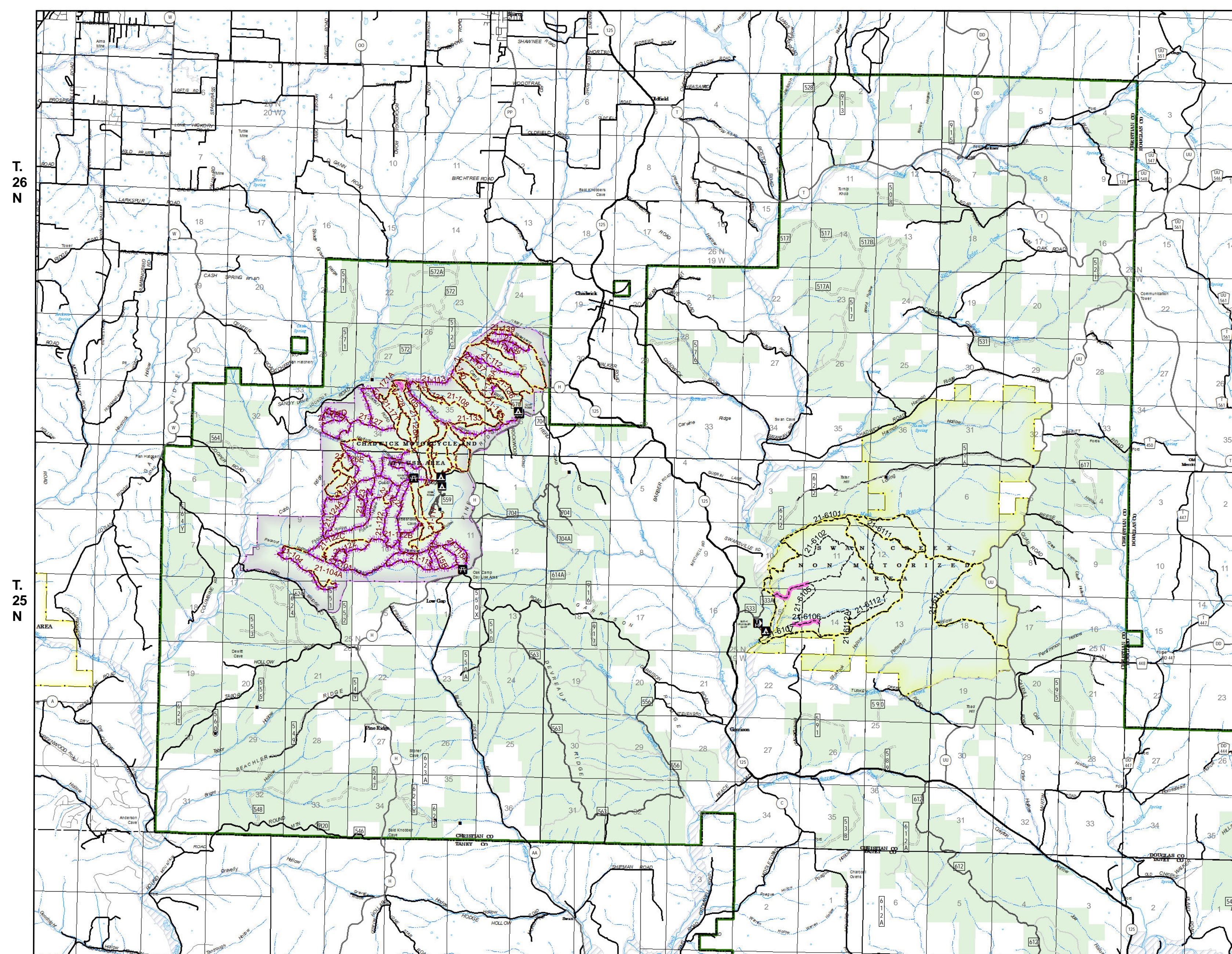
1:69,238



1 inch = 1.09 miles

NAD 1983 Datum  
UTM 15 North

Prepared by:  
Eastern Area IMT  
5/12/2017 @ 1630

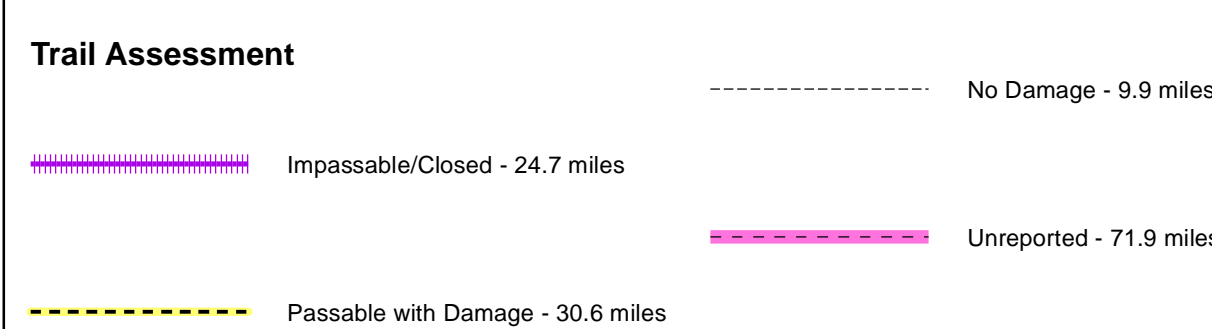


Data Current as of 5/12/2017 @ 1400

FS Trails, Division Zone 3 Ava RD  
Needing Assessment = 71.9 Miles  
**TRAIL TYPE**

ATV Trails - 16.8 Miles  
Equestrian Trails - 55.1 Miles  
Bicycle Trails - 0 Miles  
Hiking Trails - 0 Miles

### Assessment Layer



### Legend

- Campground (2)
- Day Use Area (3)
- TRAILHEAD (2)
- Trailhead (3)
- Observation Site (4)
- Info Site/Fee Station (1)
- Day Use Area (9)
- Campground (5)
- Non-Motorized Trail
- Motorized Trail
- Gate
- Barrier
- OPER\_MAINT\_LEVEL**
- 1 - BASIC CUSTODIAL CARE (CLOSED)
- 2 - HIGH CLEARANCE VEHICLES
- 3/4 - SUITABLE FOR PASSENGER CARS
- US Numbered Routes
- Missouri Numbered Routes
- Missouri Lettered Route
- County Road
- Other Roads
- Private Road
- Flood Hazard
- Channel in Water Area
- Stream - Intermittent
- Stream - Perennial
- Land Subject to Inundation
- Open Water - Perennial
- Open Water - Intermittent
- Pit
- Sand Area
- Mark Twain National Forest
- National Wilderness Area (2)
- State/County Special Area (5)
- FS Spec Mgt/Rec Area (1)
- USDA FOREST SERVICE



Requires PDF Maps