



Requires PDF Maps



R. 3 E R. 4 E R. 5 E R. 6 E R. 7 E

T. 28 N

T. 27 N

T. 26 N

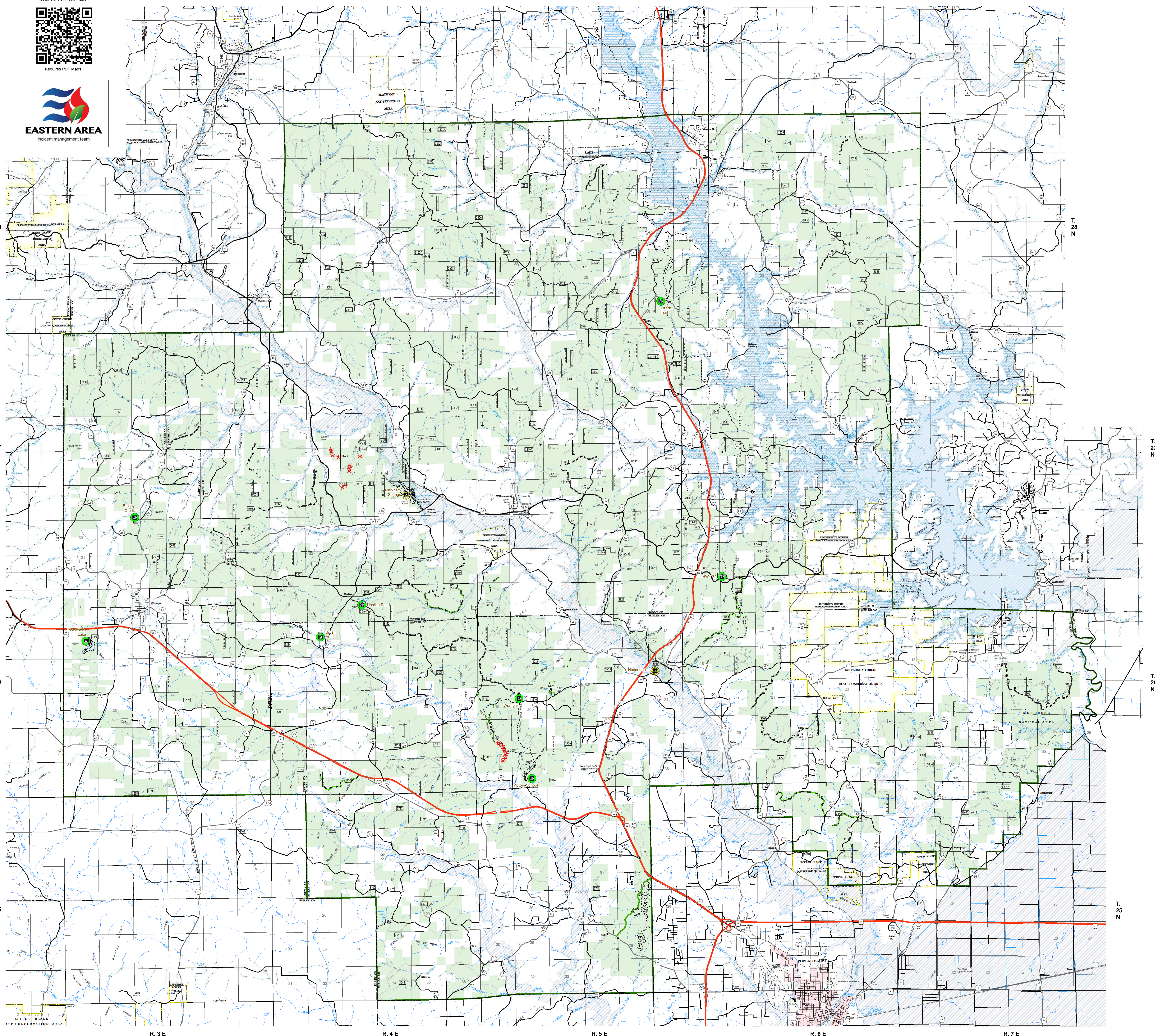
T. 25 N

T. 28 N

T. 27 N

T. 26 N

T. 25 N



R. 3 E R. 4 E R. 5 E R. 6 E R. 7 E

USDA Southern Tier Flood 2017 MO-MTF-170313

**Assessment Map
Roads & Recreation Sites**

May 15, 2017 0700

Branch Two
Division Black River
Poplar Bluff Ranger District / Mark Twain National Forest

Legend

Campground (2)	Trailhead (7)	Boating Site (1)	Non-Motorized Trail	Gate	Barrier
OPER_MAINT_LEVEL					
1 - BASIC CUSTODIAL CARE (CLOSED)	2 - HIGH CLEARANCE VEHICLES	3/4 - SUITABLE FOR PASSENGER CARS	US Numbered Routes	Missouri Numbered Routes	Missouri Lettered Route
County Road	Other Roads	Private Road	Railroad	Flood Hazard	Canal/Aque/Ditch
Stream - Intermittent	Stream - Perennial	Sand Area	Strip Mine	Land Subject to Inundation	Open Water - Perennial
Open Water - Intermittent	Mark Twain National Forest	USDA Forest Service			

Assessment Layers

Road Assessment

- Unreported - 47.0 miles
- No Damage - 2.2 miles
- Passable with Damage - 11.1 miles
- Impassable/Closed - 3.2 miles

Rec Site Assessment

- Unreported (0)
- No Damage (8)
- Open/minor damage (2)
- Closed/significant damage (0)

Data Current as of 5/13/2017 @ 1900

**FS Roads, Zone Black River, Poplar Bluff RD
Needing Assessment = 47.0 Miles**

OPERATIONAL MAINTENANCE LEVEL

- 3 - Suitable for Passenger Cars - 36.1 Miles
- 4 - Moderate Degree of User Comfort - 10.9 Miles

**FS Recreation Sites, Zone Black River, Poplar Bluff RD
Needing Assessment = No Sites**

North arrow

1:63,360

0 1 2 3 4 Miles

1 inch = 1 miles

NAD 1983 Datum
UTM 15 North

Prepared by:
Eastern Area IMT
5/14/2017 @ 1050