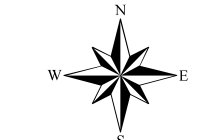


Assessment Map Roads & Recreation Sites

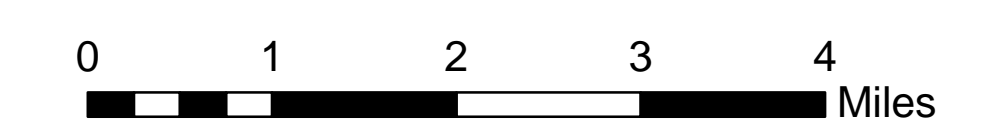
May 15, 2017 0700

Branch Two

Divisions Eleven Point and Current River
Eleven Point/Doniphan Ranger District
Mark Twain National Forest



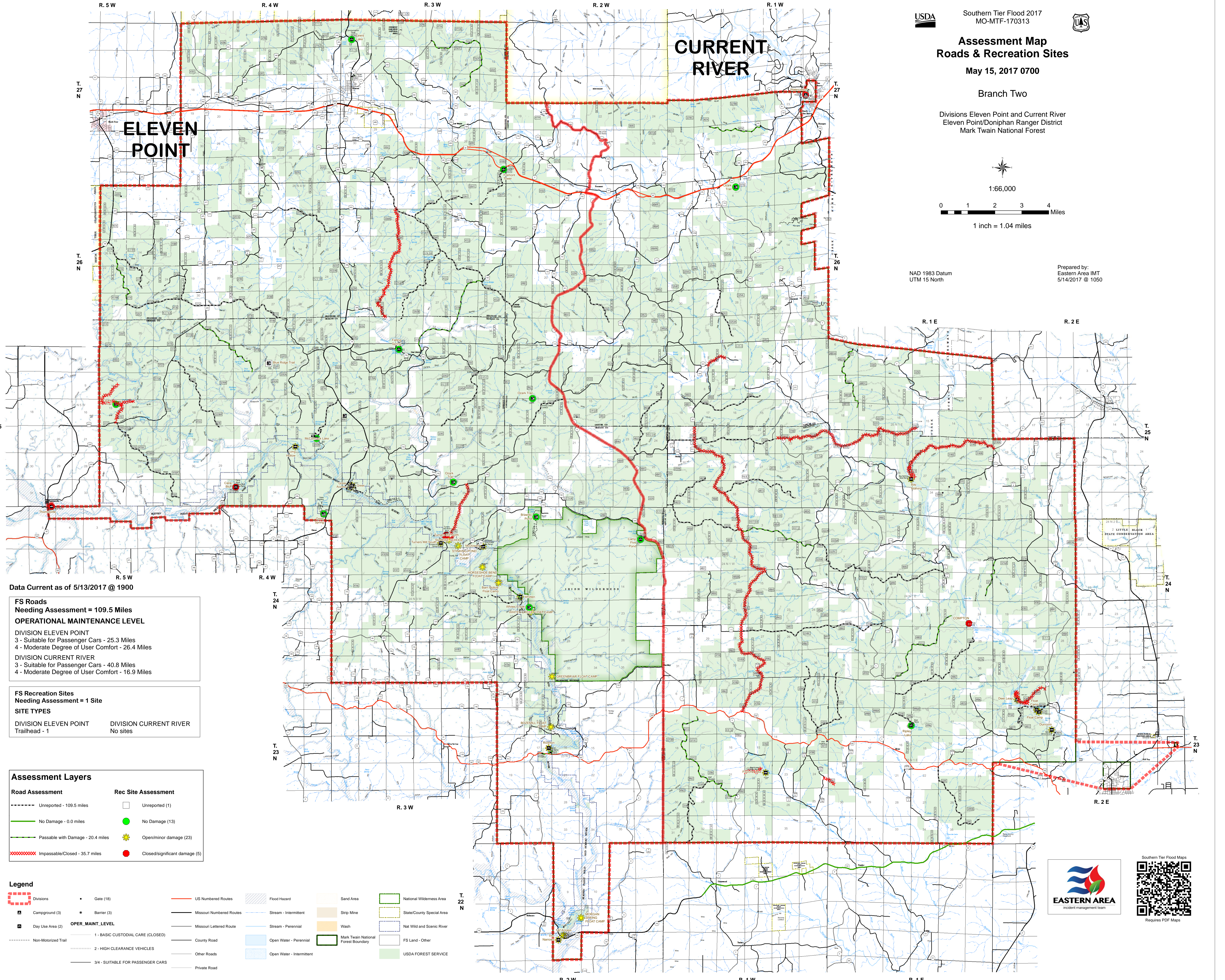
1:66,000



1 inch = 1.04 miles

NAD 1983 Datum
UTM 15 North

Prepared by:
Eastern Area IMT
5/14/2017 @ 1050



Data Current as of 5/13/2017 @ 1900

FS Roads
Needing Assessment = 109.5 Miles
OPERATIONAL MAINTENANCE LEVEL
DIVISION ELEVEN POINT
3 - Suitable for Passenger Cars - 25.3 Miles
4 - Moderate Degree of User Comfort - 26.4 Miles
DIVISION CURRENT RIVER
3 - Suitable for Passenger Cars - 40.8 Miles
4 - Moderate Degree of User Comfort - 16.9 Miles

FS Recreation Sites
Needing Assessment = 1 Site
SITE TYPES
DIVISION ELEVEN POINT
Trailhead - 1
DIVISION CURRENT RIVER
No sites

Assessment Layers

Road Assessment	Rec Site Assessment
--- Unreported - 109.5 miles	□ Unreported (1)
— No Damage - 0.0 miles	● No Damage (13)
— Passable with Damage - 20.4 miles	★ Open/minor damage (23)
— Impassable/Closed - 35.7 miles	● Closed/significant damage (5)

Legend

□ Divisions	● Gate (18)	— US Numbered Routes	▨ Flood Hazard	□ Sand Area	□ National Wilderness Area
□ Campground (3)	● Barrier (3)	— Missouri Numbered Routes	— Stream - Intermittent	□ Strip Mine	□ State/County Special Area
□ Day Use Area (2)	OPER_MAINT_LEVEL	— Missouri Lettered Route	— Stream - Perennial	□ Wash	□ Nat Wild and Scenic River
--- Non-Motorized Trail	1 - BASIC CUSTODIAL CARE (CLOSED)	— County Road	□ Open Water - Perennial	□ Mark Twain National Forest Boundary	□ FS Land - Other
--- 2 - HIGH CLEARANCE VEHICLES	2 - HIGH CLEARANCE VEHICLES	— Other Roads	□ Open Water - Intermittent	□ Mark Twain National Forest Boundary	□ USDA FOREST SERVICE
--- 3/4 - SUITABLE FOR PASSENGER CARS	3/4 - SUITABLE FOR PASSENGER CARS	— Private Road			



Southern Tier Flood Maps
Requires PDF Maps