

Assessment Map Roads & Recreation Sites

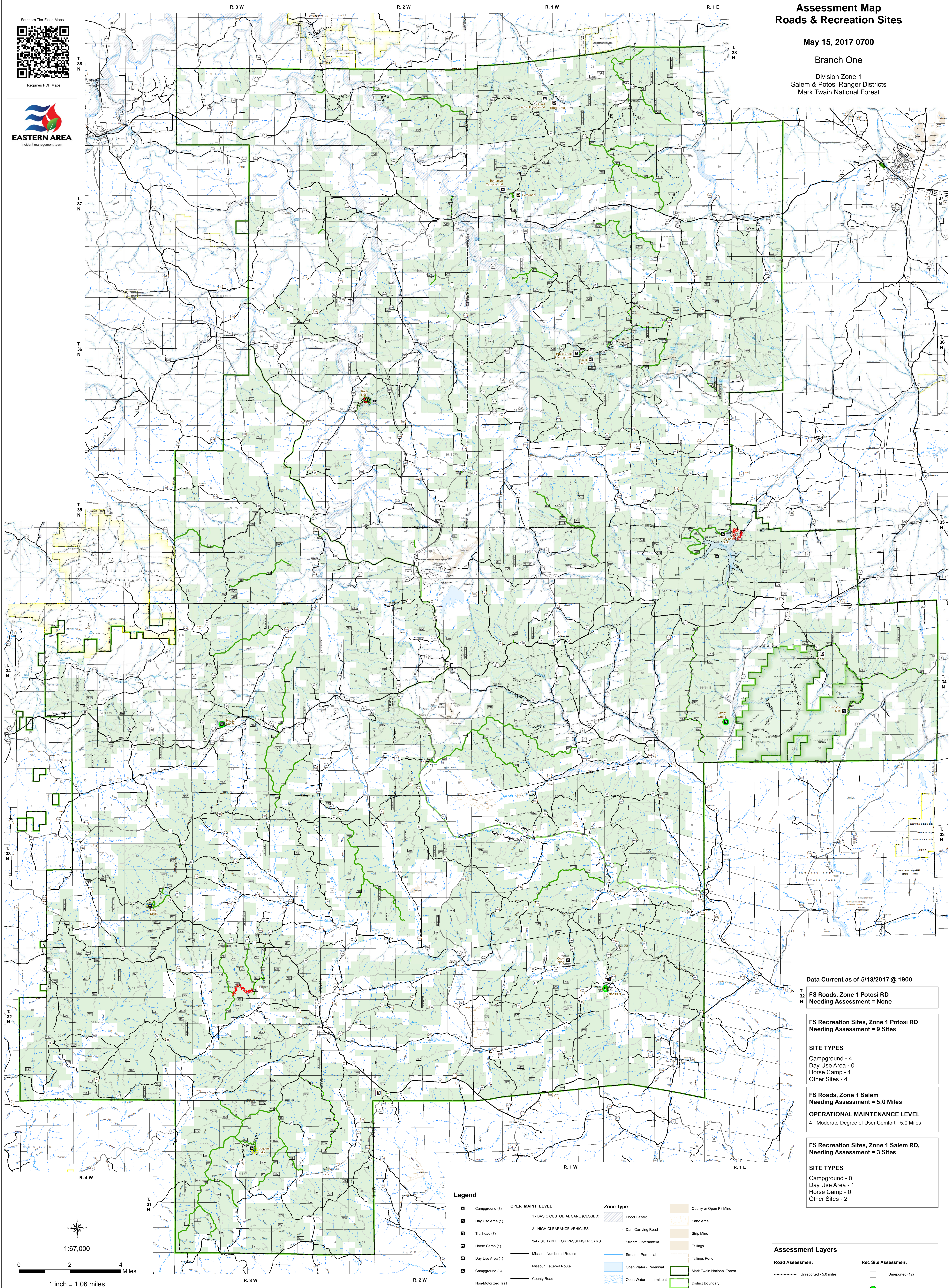
May 15, 2017 0700

Branch One

Division Zone 1
Salem & Potosi Ranger Districts
Mark Twain National Forest



Requires PDF Maps



Data Current as of 5/13/2017 @ 1900

FS Roads, Zone 1 Potosi RD
Needling Assessment = None

FS Recreation Sites, Zone 1 Potosi RD
Needling Assessment = 9 Sites

SITE TYPES
Campground - 4
Day Use Area - 0
Horse Camp - 1
Other Sites - 4

FS Roads, Zone 1 Salem
Needling Assessment = 5.0 Miles

OPERATIONAL MAINTENANCE LEVEL
4 - Moderate Degree of User Comfort - 5.0 Miles

FS Recreation Sites, Zone 1 Salem RD,
Needling Assessment = 3 Sites

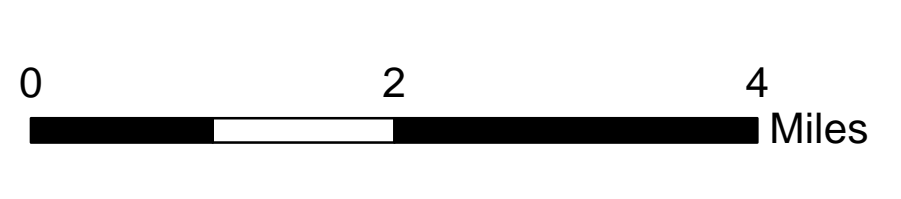
SITE TYPES
Campground - 0
Day Use Area - 1
Horse Camp - 0
Other Sites - 2

Legend

Campground (8)	Day Use Area (1)	Trailhead (7)	Horse Camp (1)	Day Use Area (1)	Campground (3)	Non-Motorized Trail	Gate	Barrier	OPER. MAINT. LEVEL	Zone Type	Quarry or Open Pit Mine	Sand Area	Strip Mine	Tailings	Tailings Pond	Mark Twain National Forest	District Boundary	USDA FOREST SERVICE
									1 - BASIC CUSTODIAL CARE (CLOSED)	Flood Hazard								
									2 - HIGH CLEARANCE VEHICLES	Dam Carrying Road								
									3/4 - SUITABLE FOR PASSENGER CARS	Stream - Intermittent								
									Missouri Numbered Routes	Stream - Perennial								
									Missouri Lettered Routes	Open Water - Perennial								
									County Road	Open Water - Intermittent								
									Other Roads									
									Private Road									
									Railroad									



1:67,000



1 inch = 1.06 miles

Road Assessment	Rec Site Assessment
Unreported - 5.0 miles	Unreported (12)
No Damage - 106.8 miles	No Damage (3)
Passable with Damage - 28.5 miles	Open/minor damage (2)
Impassible/Closed - 1.3 miles	Closed/significant damage (1)