

R. 27 W

R. 26 W

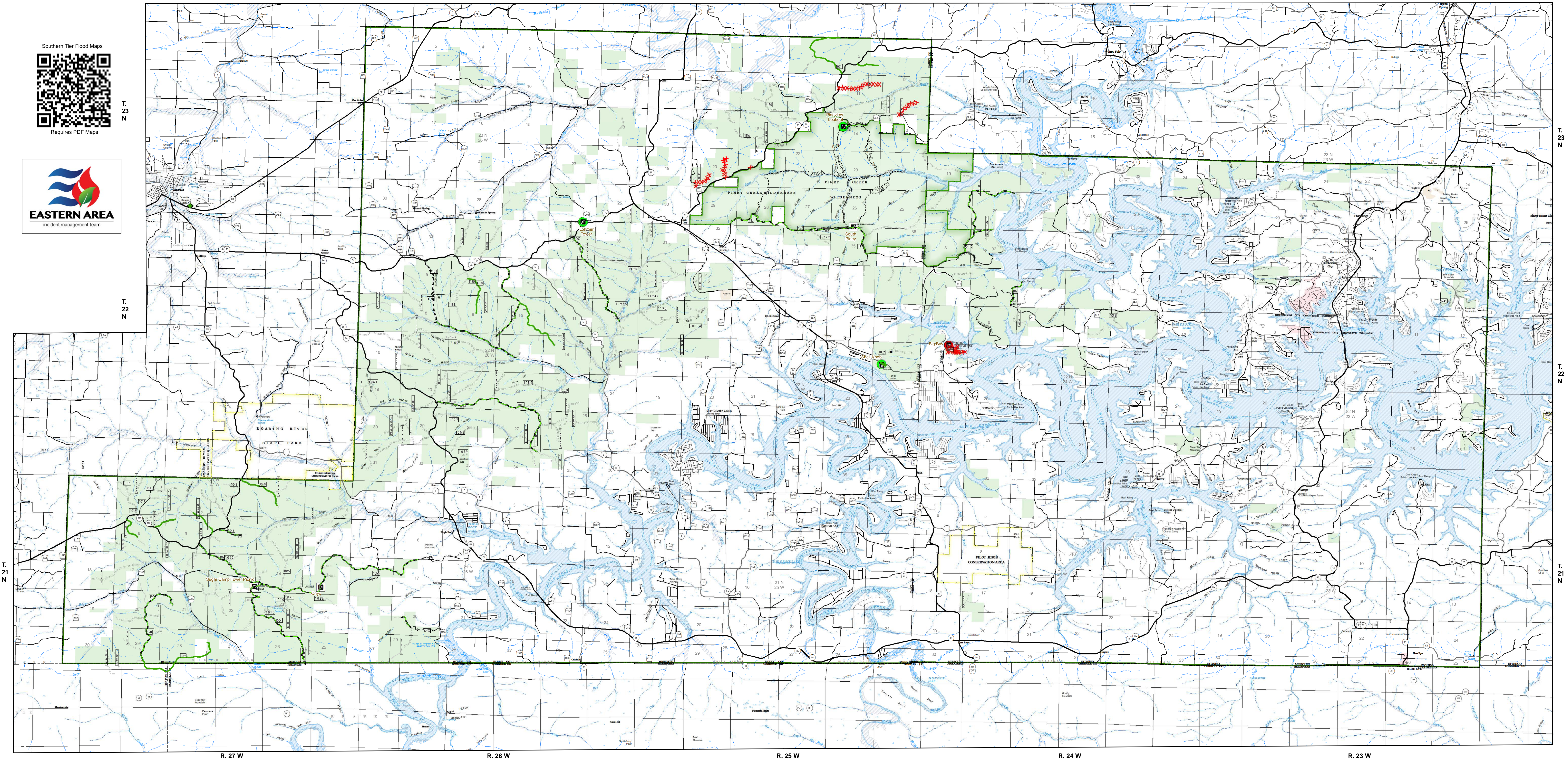
R. 25 W

R. 24 W

R. 23 W



Requires PDF Maps



R. 27 W

R. 26 W

R. 25 W

R. 24 W

R. 23 W

T. 21 N

T. 22 N

T. 23 N

T. 22 N

T. 21 N

USDA Southern Tier Flood 2017 MO-MTF-170313

**Assessment Map
Roads & Recreation Sites**

May 15, 2017 0700

Branch One
Division Zone 3
Cassville Ranger District
Mark Twain National Forest

Data Current as of 5/13/2017 @ 1900

**FS Roads, Zone 3 - Cassville RD
Needing Assessment = 2.0 Miles**

OPERATIONAL MAINTENANCE LEVEL
3 - Suitable for Passenger Cars - 2.0 Miles

**FS Recreation Sites, Zone 3 - Cassville RD
Needing Assessment = 3 sites**

SITE TYPES
Day Use Area - 2
Other Sites - 1

Assessment Layers

- Road Assessment**
- Unreported - 2.0 miles
 - No Damage - 4.5 miles
 - Passable with Damage - 26.7 miles
 - Impassable/Closed - 1.0 miles
- Rec Site Assessment**
- Unreported (3)
 - No Damage (3)
 - Open/minor damage (0)
 - Closed/significant damage (1)

Legend

- Campground (1)
 - Trailhead (2)
 - Observation Site (1)
 - Day Use Area (4)
 - Non-Motorized Trail
 - Gate
- OPER_MAJNT_LEVEL**
- 1 - BASIC CUSTODIAL CARE (CLOSED)
 - 2 - HIGH CLEARANCE VEHICLES
 - 3/4 - SUITABLE FOR PASSENGER CARS
- Missouri Numbered Routes
 - Missouri Lettered Route
 - County Road
 - Other Roads
 - Private Road
 - Railroad
- Flood Hazard
 - Channel in Water Area
 - Stream - Intermittent
 - Stream - Perennial
 - Land Subject to Inundation
 - Open Water - Perennial
 - Open Water - Intermittent
- Pit
 - Quarry or Open Pit Mine
 - Sand Area
 - Mark Twain National Forest
 - USDA FOREST SERVICE

North Arrow

1:63,360

0 1 2 3 4 Miles

1 inch = 1 miles

NAD 1983 Datum
UTM 15 North

Prepared by:
Eastern Area IMT
5/14/2017 @ 1455