

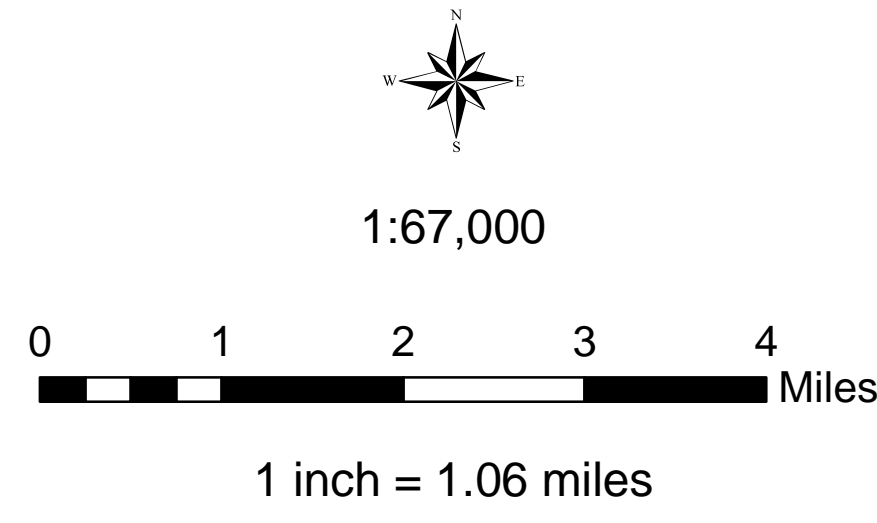


USDA Southern Tier Flood 2017 MO-MTF-170313

**Assessment Map
Roads & Recreation Sites**

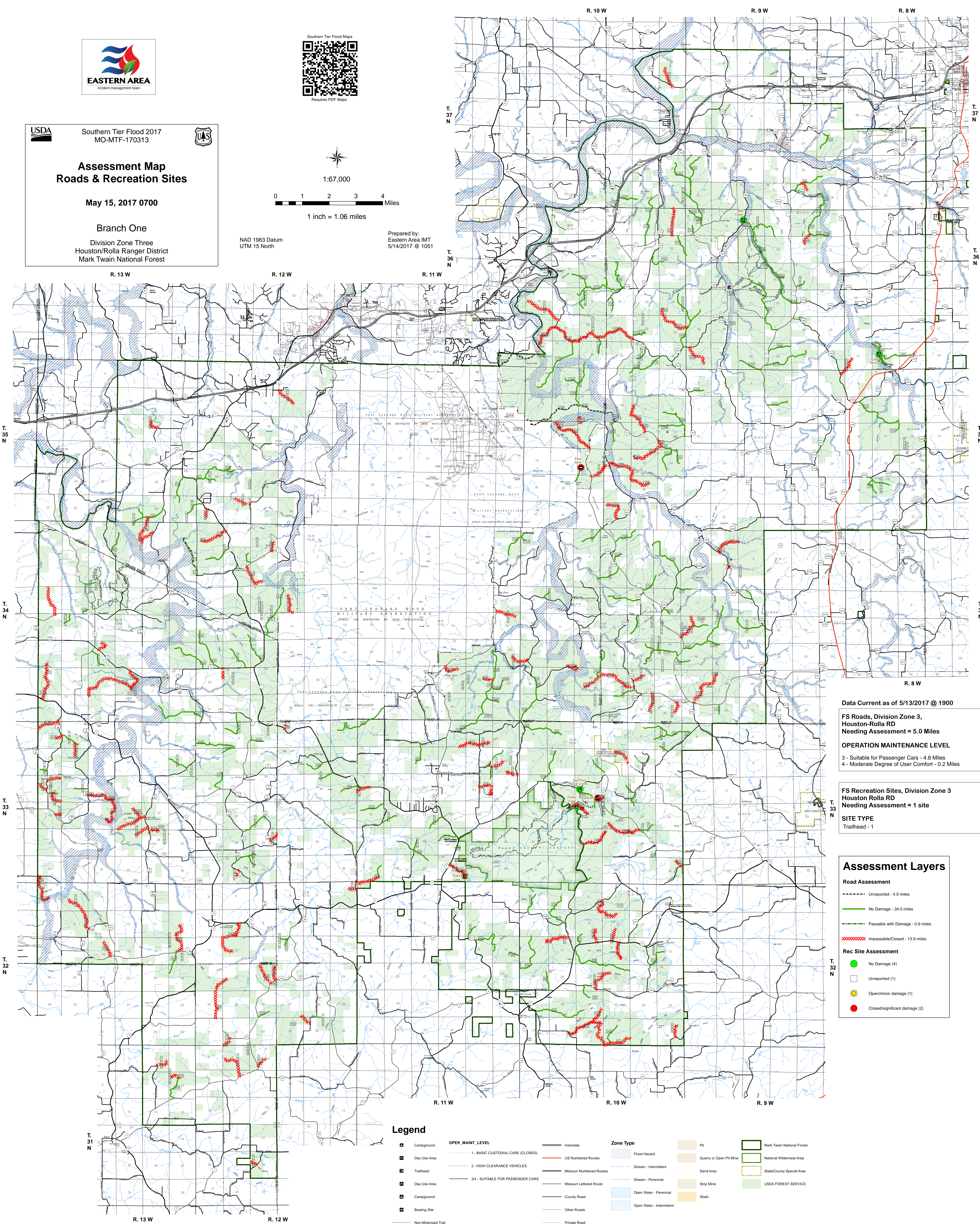
May 15, 2017 0700

Branch One
Division Zone Three
Houston/Rolla Ranger District
Mark Twain National Forest



NAD 1983 Datum
UTM 15 North

Prepared by:
Eastern Area IMT
5/14/2017 @ 1051



Data Current as of 5/13/2017 @ 1900

FS Roads, Division Zone 3,
Houston-Rolla RD
Needing Assessment = 5.0 Miles

OPERATION MAINTENANCE LEVEL
3 - Suitable for Passenger Cars - 4.8 Miles
4 - Moderate Degree of User Comfort - 0.2 Miles

FS Recreation Sites, Division Zone 3
Houston Rolla RD
Needing Assessment = 1 site

SITE TYPE
Trailhead - 1

Assessment Layers

- Road Assessment**
- Unreported - 4.9 miles
 - No Damage - 34.0 miles
 - Passable with Damage - 0.9 miles
 - Impassable/Closed - 13.9 miles
- Rec Site Assessment**
- No Damage (4)
 - Unreported (1)
 - Open/minor damage (1)
 - Closed/significant damage (2)

Legend

- | | | | | | |
|---------------------|-----------------------------------|--------------------------|---------------------------|-------------------------|----------------------------|
| Campground | OPER_MAINT_LEVEL | Interstate | Zone Type | Pit | Mark Twain National Forest |
| Day Use Area | 1 - BASIC CUSTODIAL CARE (CLOSED) | US Numbered Routes | Flood Hazard | Quarry or Open Pit Mine | National Wilderness Area |
| Trailhead | 2 - HIGH CLEARANCE VEHICLES | Missouri Numbered Routes | Stream - Intermittent | Sand Area | State/County Special Area |
| Day Use Area | 3/4 - SUITABLE FOR PASSENGER CARS | Missouri Lettered Route | Stream - Perennial | Strip Mine | USDA FOREST SERVICE |
| Campground | | County Road | Open Water - Perennial | Wash | |
| Boasting Site | | Other Roads | Open Water - Intermittent | | |
| Non-Motorized Trail | | Private Road | | | |
| Gate | | Railroad | | | |
| Barrier | | | | | |