

R 12 W

R 11 W

R 10 W

R 9 W

T 27 N

T 27 N

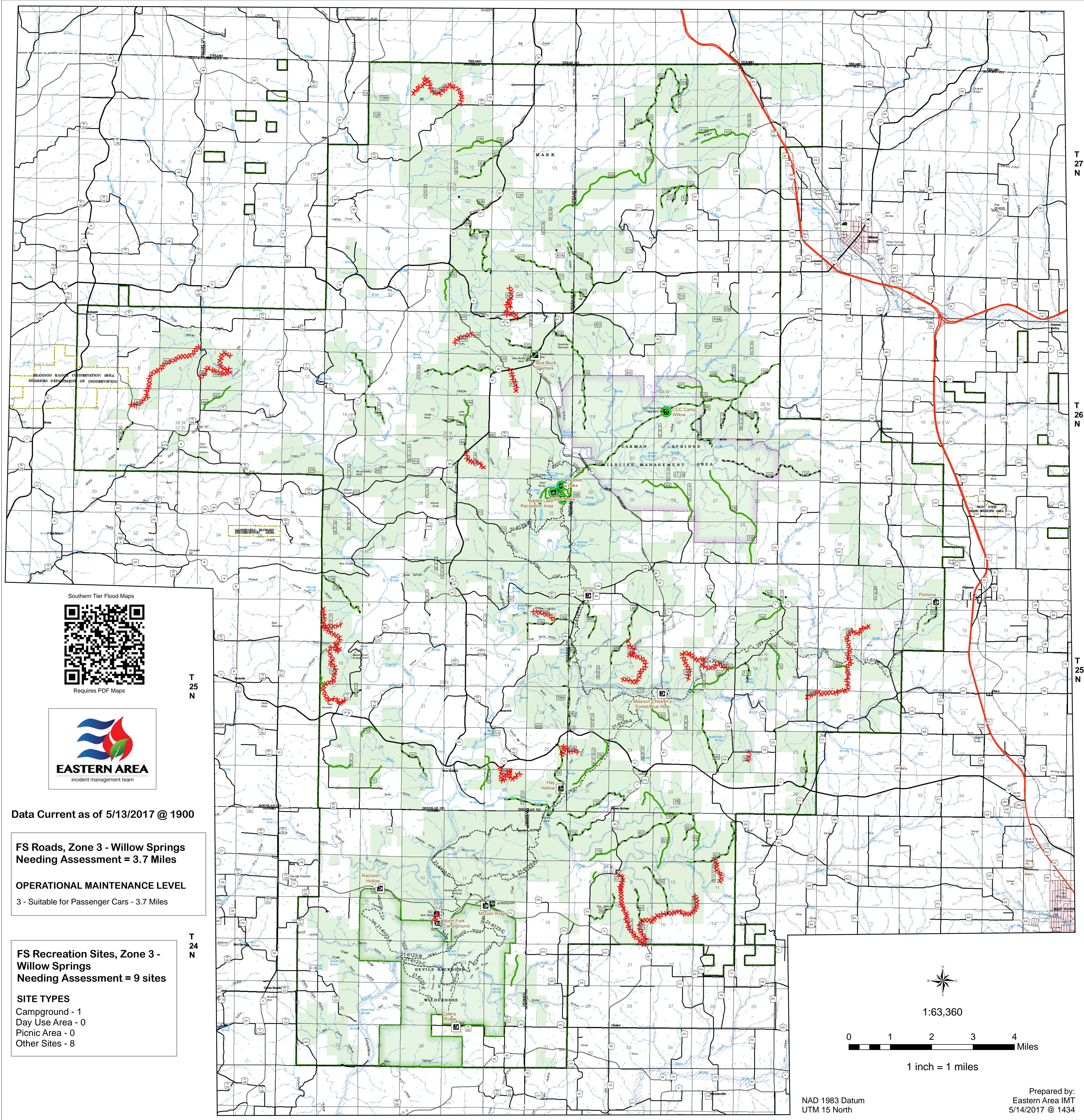
T 26 N

T 26 N

T 25 N

T 25 N

T 24 N



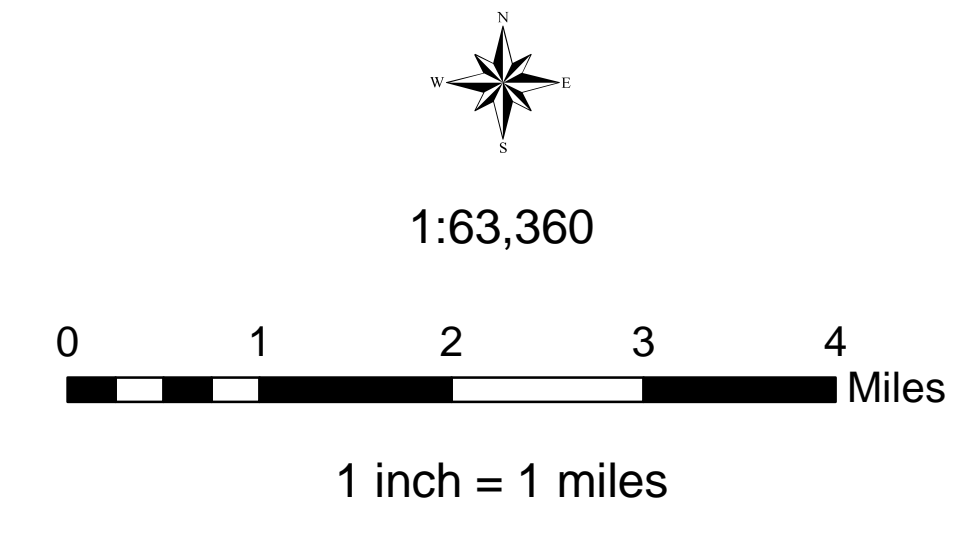
Data Current as of 5/13/2017 @ 1900

**FS Roads, Zone 3 - Willow Springs
Needing Assessment = 3.7 Miles**

OPERATIONAL MAINTENANCE LEVEL
3 - Suitable for Passenger Cars - 3.7 Miles

**FS Recreation Sites, Zone 3 -
Willow Springs
Needing Assessment = 9 sites**

SITE TYPES
Campground - 1
Day Use Area - 0
Picnic Area - 0
Other Sites - 8



NAD 1983 Datum
UTM 15 North

Prepared by:
Eastern Area IMT
5/14/2017 @ 1434

USDA Southern Tier Flood 2017
MO-MTF-170313

**Assessment Map
Roads & Recreation Sites**
May 15, 2017 0700

Branch One

Division Zone 3
Willow Springs Ranger District
Mark Twain National Forest

Assessment Layers

Road Assessment	Rec Site Assessment
----- Unreported - 3.7 miles	□ Unreported (9)
———— No Damage - 8.8 miles	● No Damage (4)
——— Passable with Damage - 27.0 miles	✱ Open/minor damage (0)
XXXXXXXXXX Impassable/Closed - 0.6 miles	● Closed/significant damage (0)

Legend

⊠ Campground (2)	----- Non-Motorized Trail	— US Numbered Routes	▨ Flood Hazard	□ Sand Area
⊠ Trailhead (9)	▪ Gate (31)	— Missouri Numbered Routes	— Stream - Intermittent	▨ Strip Mine
⊠ Observation Site (1)	● Barrier (5)	— Missouri Lettered Route	— Stream - Perennial	▨ Mark Twain National Forest
⊠ Interpretive Site (Minor) (1)	OPER_MAINT_LEVEL	— County Road	— Waterfall	▨ National Wilderness Area
⊠ Day Use Area (1)	— 1 - BASIC CUSTODIAL CARE (CLOSED)	— Other Roads	— Open Water - Perennial	▨ State/County Special Area
⊠ Campground (1)	— 2 - HIGH CLEARANCE VEHICLES	— Private Road	— Open Water - Intermittent	▨ FS Spec Mgt/Rec Area
	— 3/4 - SUITABLE FOR PASSENGER CARS	— Railroad	▨ Quarry or Open Pit Mine	▨ USDA Forest Service