

R. 20 W

R. 19 W

R. 18 W



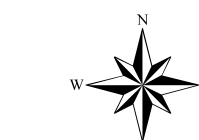
Southern Tier Flood 2017
MO-MTF-170313



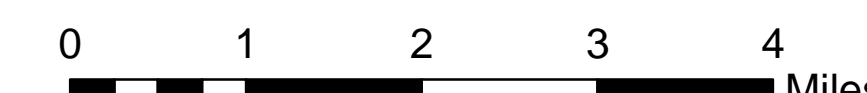
Assessment Map Trails

May 15, 2017 0700

Branch One
Division Zone 3
Ava Ranger District
Mark Twain National Forest



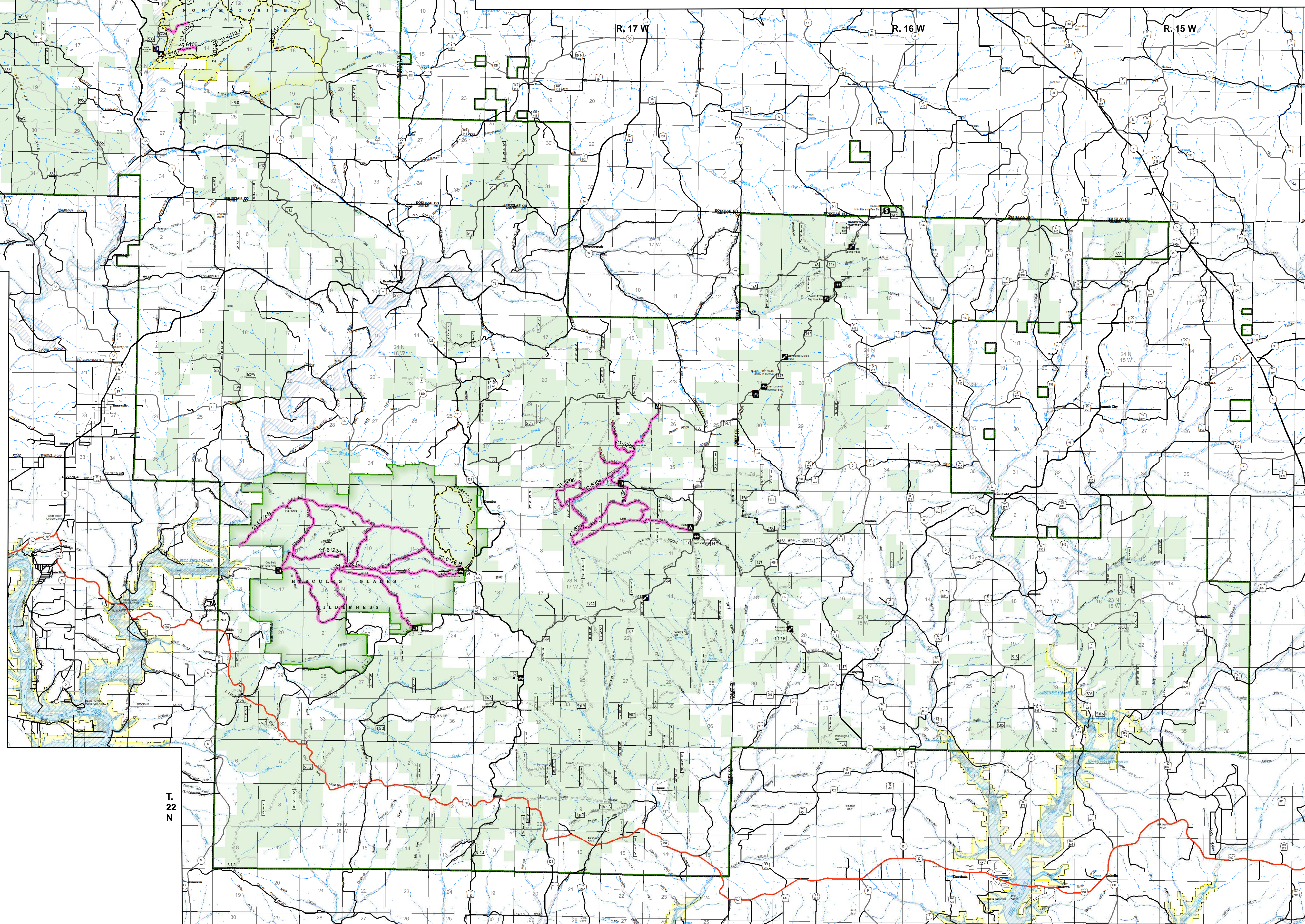
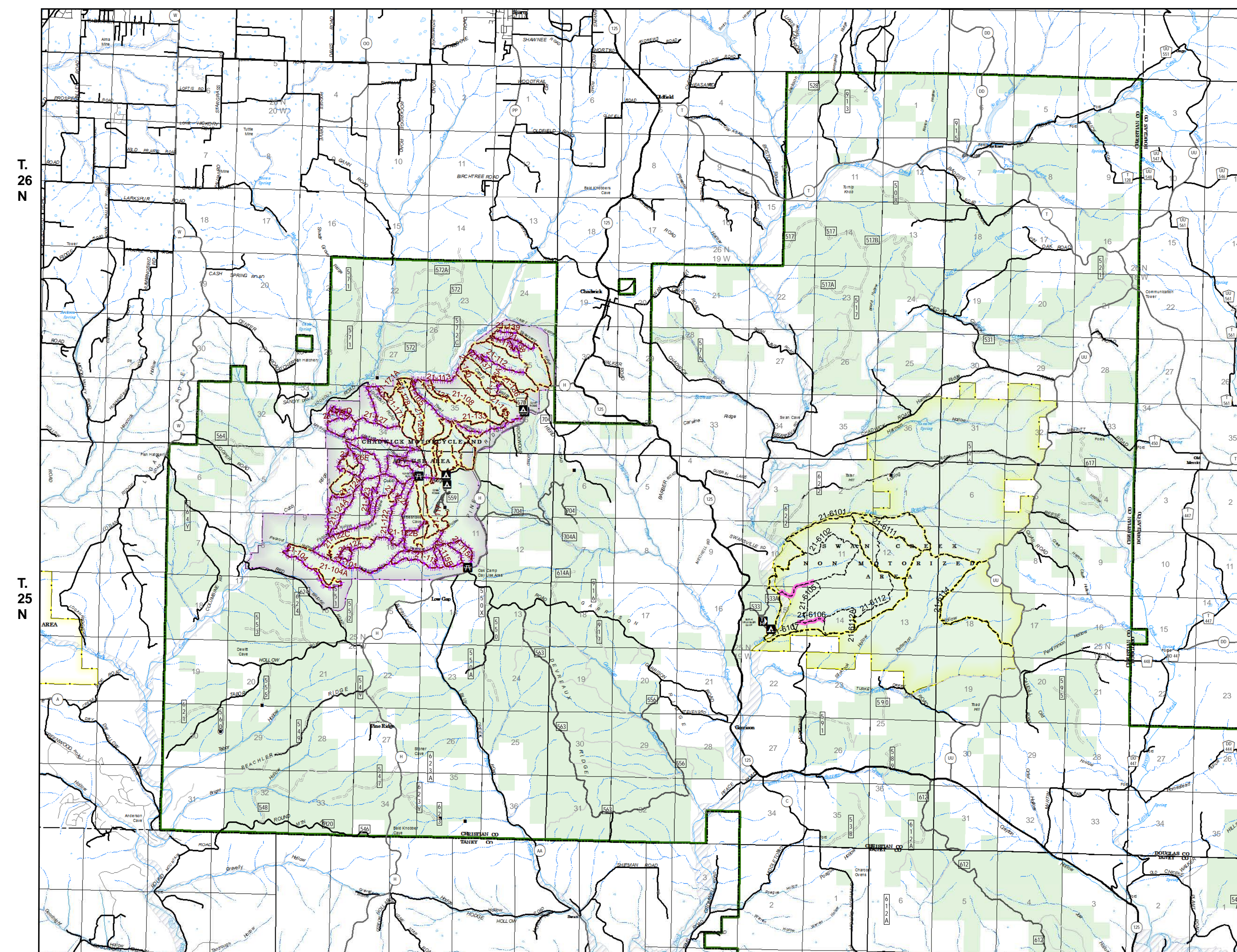
1:69,238



1 inch = 1.09 miles

NAD 1983 Datum
UTM 15 North

Prepared by:
Eastern Area IMT
5/14/2017 @ 1645



Data Current as of 5/13/2017 @ 1900

FS Trails, Division Zone 3 Ava RD
Needing Assessment = 40.2 Miles

TRAIL TYPE
Equestrian Trails - 40.2 Miles

Assessment Layer

Trail Assessment

- Unreported - 40.2 miles
- No Damage - 10.0 miles
- Passable with Damage - 50.3 miles
- Impassable/Closed - 36.4 miles

Legend

- Campground (2)
- Day Use Area (3)
- TRAILHEAD (2)
- Trailhead (3)
- Observation Site (4)
- Info Site/Fee Station (1)
- Day Use Area (9)
- Campground (5)
- Non-Motorized Trail
- Motorized Trail
- Gate
- Barrier
- 1 - BASIC CUSTODIAL CARE (CLOSED)
- 2 - HIGH CLEARANCE VEHICLES
- 3/4 - SUITABLE FOR PASSENGER CARS
- US Numbered Routes
- Missouri Numbered Routes
- Missouri Lettered Route
- County Road
- Other Roads
- Private Road
- Flood Hazard
- Channel in Water Area
- Stream - Intermittent
- Stream - Perennial
- Land Subject to Inundation
- Open Water - Perennial
- Open Water - Intermittent
- Pit
- Sand Area
- Mark Twain National Forest
- National Wilderness Area (2)
- State/County Special Area (5)
- FS Spec Mgt/Rec Area (1)
- USDA FOREST SERVICE