

R. 27 W

R. 26 W

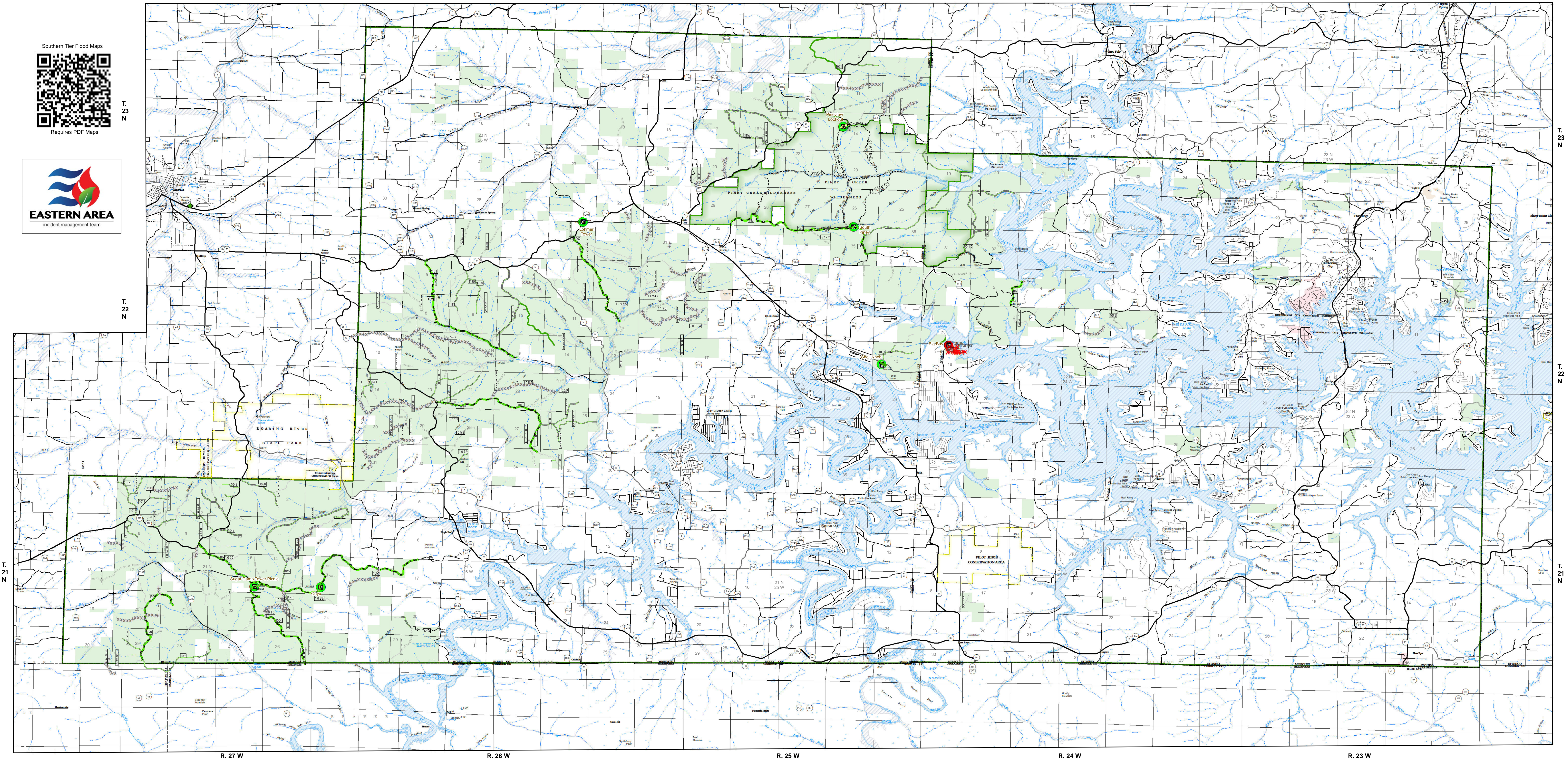
R. 25 W

R. 24 W

R. 23 W



Requires PDF Maps



R. 27 W

R. 26 W

R. 25 W

R. 24 W

R. 23 W

T. 21 N

T. 22 N

T. 23 N

T. 22 N

T. 21 N

USDA Southern Tier Flood 2017 MO-MTF-170313

**Assessment Map  
Roads & Recreation Sites**

May 17, 2017 0700

Branch One  
Division Zone 3  
Cassville Ranger District  
Mark Twain National Forest

Data Current as of 5/16/2017 @ 1400

**FS Roads, Zone 3 - Cassville RD  
Needing Assessment = 0.3 Miles  
OPERATIONAL MAINTENANCE LEVEL**

3 - Suitable for Passenger Cars - 0.3 Miles

**FS Recreation Sites, Zone 3 - Cassville RD  
Needing Assessment = None**

**Assessment Layers**

**OML 2 Road Assessment**

- No Damage - 27.4 miles (47)
- Passable with Damage - 14.4 miles (12)
- Impassible/Closed - 28.7 miles (37)

**OML 3 & 4 Road Assessment**

- Unreported - 0.3 miles (2)
- No Damage - 4.7 miles (5)
- Passable with Damage - 28.4 miles (15)
- Impassible/Closed - 1.0 miles (1)

**Rec Site Assessment**

- Unreported (0)
- No Damage (6)
- Open/minor damage (0)
- Closed/significant damage (1)

**Legend**

- Campground (1)
- Trailhead (2)
- Observation Site (1)
- Day Use Area (4)
- Non-Motorized Trail
- Gate

**OPER\_MAINT\_LEVEL**

- 1 - BASIC CUSTODIAL CARE (CLOSED)
- 2 - HIGH CLEARANCE VEHICLES
- 3/4 - SUITABLE FOR PASSENGER CARS

- Missouri Numbered Routes
- Missouri Lettered Route
- County Road
- Other Roads
- Private Road
- Railroad

- Flood Hazard
- Channel in Water Area
- Stream - Intermittent
- Stream - Perennial
- Land Subject to Inundation
- Open Water - Perennial
- Open Water - Intermittent

- Pit
- Quarry or Open Pit Mine
- Sand Area
- Mark Twain National Forest
- USDA FOREST SERVICE

Scale: 1:63,360  
0 1 2 3 4 Miles  
1 inch = 1 miles

NAD 1983 Datum  
UTM 15 North

Prepared by:  
Eastern Area IMT  
5/16/2017 @ 1703