

R 12 W

R 11 W

R 10 W

R 9 W

T 27 N

T 27 N

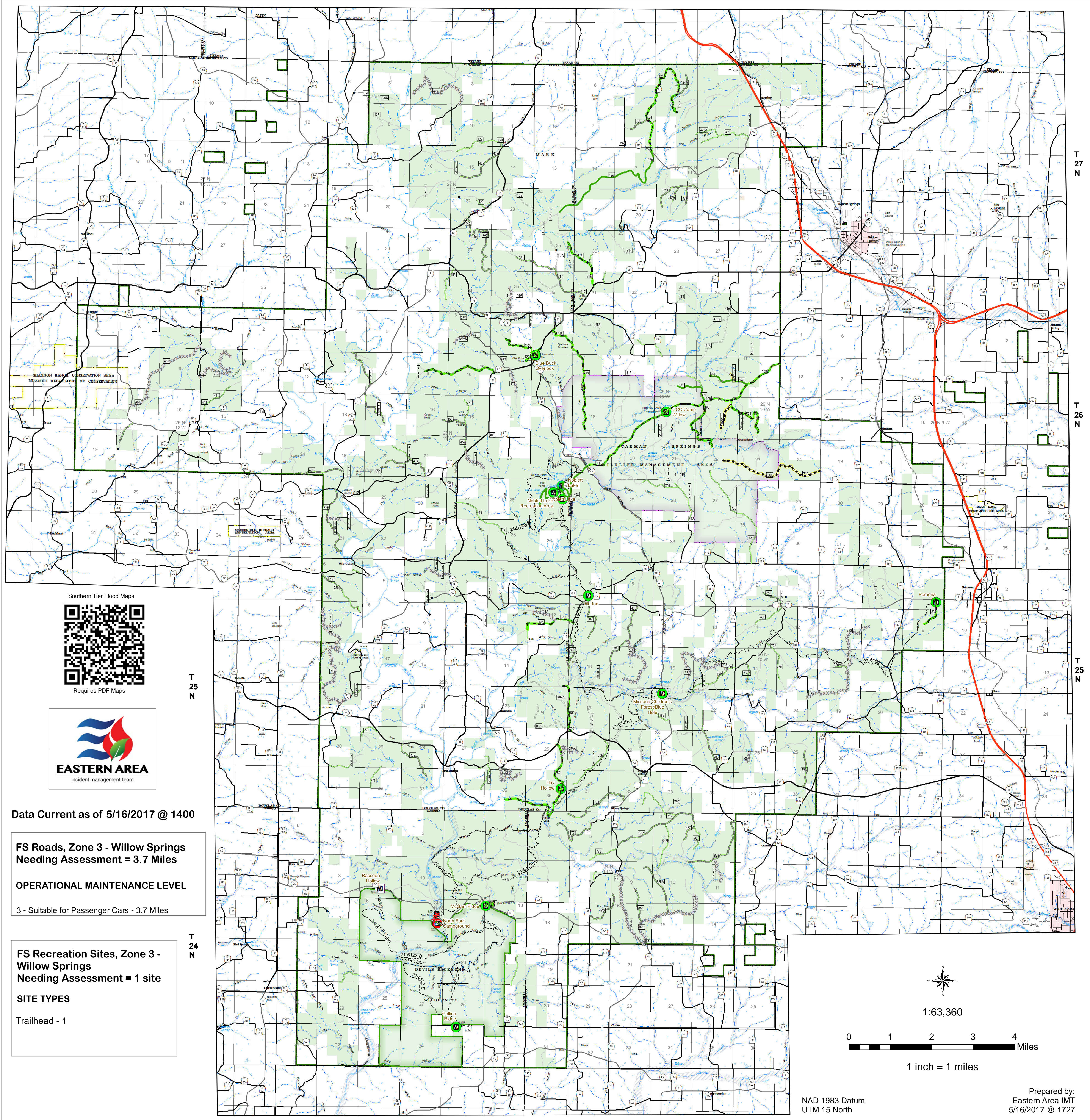
T 26 N

T 26 N

T 25 N

T 25 N

T 24 N



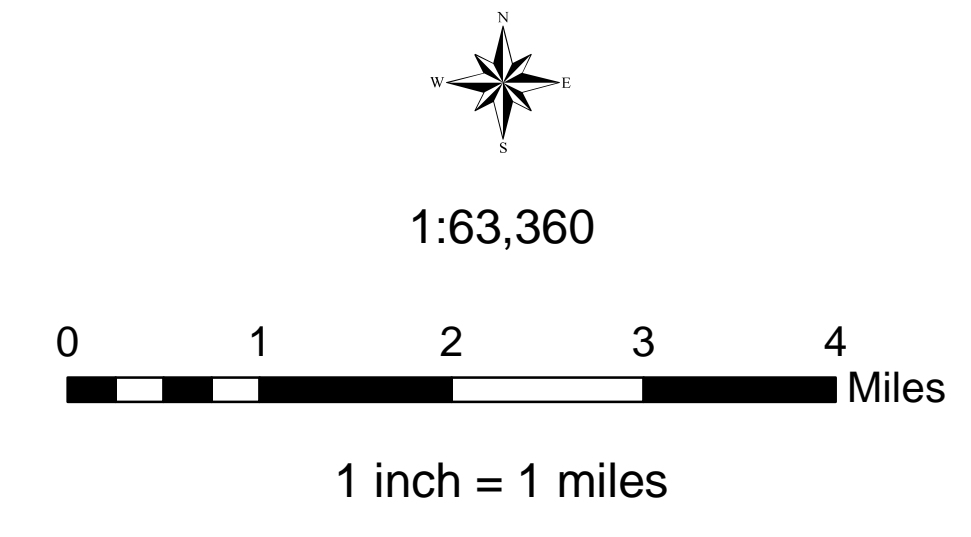
Data Current as of 5/16/2017 @ 1400

**FS Roads, Zone 3 - Willow Springs  
Needing Assessment = 3.7 Miles**

**OPERATIONAL MAINTENANCE LEVEL**  
3 - Suitable for Passenger Cars - 3.7 Miles

**FS Recreation Sites, Zone 3 -  
Willow Springs  
Needing Assessment = 1 site**

**SITE TYPES**  
Trailhead - 1



NAD 1983 Datum  
UTM 15 North  
Prepared by:  
Eastern Area IMT  
5/16/2017 @ 1727

USDA Southern Tier Flood 2017 MO-MTF-170313

**Assessment Map  
Roads & Recreation Sites**  
May 17, 2017 0700

Branch One

Division Zone 3  
Willow Springs Ranger District  
Mark Twain National Forest

Assessment Layers		Rec Site Assessment
<b>OML 2 Road Assessment</b>	<b>OML 3 &amp; 4 Road Assessment</b>	<b>Unreported (1)</b>
— No Damage - 31.0 miles	— Unreported - 3.7 miles	— No Damage (11)
— Passable with Damage - 37.6 miles	— No Damage - 8.8 miles	— Open/minor damage (0)
XXXXXXXXXX Impassible/Closed - 29.8 miles	— Passable with Damage - 27.1 miles	— Closed/significant damage (1)
	XXXXXXXXXX Impassible/Closed - 0.6 miles	

Legend	
■ Campground (2)	— Non-Motorized Trail
■ Trailhead (9)	■ Gate (31)
■ Observation Site (1)	● Barrier (5)
■ Interpretive Site (Minor) (1)	— <b>OPER_MAINT_LEVEL</b>
■ Day Use Area (1)	1 - BASIC CUSTODIAL CARE (CLOSED)
■ Campground (1)	2 - HIGH CLEARANCE VEHICLES
	3/4 - SUITABLE FOR PASSENGER CARS
— US Numbered Routes	— Flood Hazard
— Missouri Numbered Routes	— Stream - Intermittent
— Missouri Lettered Route	— Stream - Perennial
— County Road	— Waterfall
— Other Roads	— Open Water - Perennial
— Private Road	— Open Water - Intermittent
— Railroad	— Quarry or Open Pit Mine
	— Sand Area
	— Strip Mine
	— Mark Twain National Forest
	— National Wilderness Area
	— State/County Special Area
	— FS Spec Mgt/Rec Area
	— USDA Forest Service