



Southern Tier Flood 2017
MO-MTF-170313



Assessment Map Trails

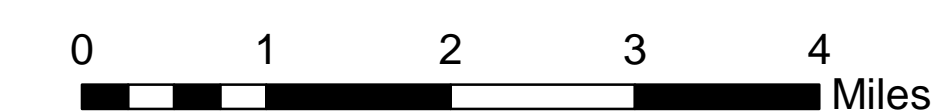
May 17, 2017 0700

Branch Two

Divisions Eleven Point and Current River
Eleven Point/Doniphan Ranger District
Mark Twain National Forest



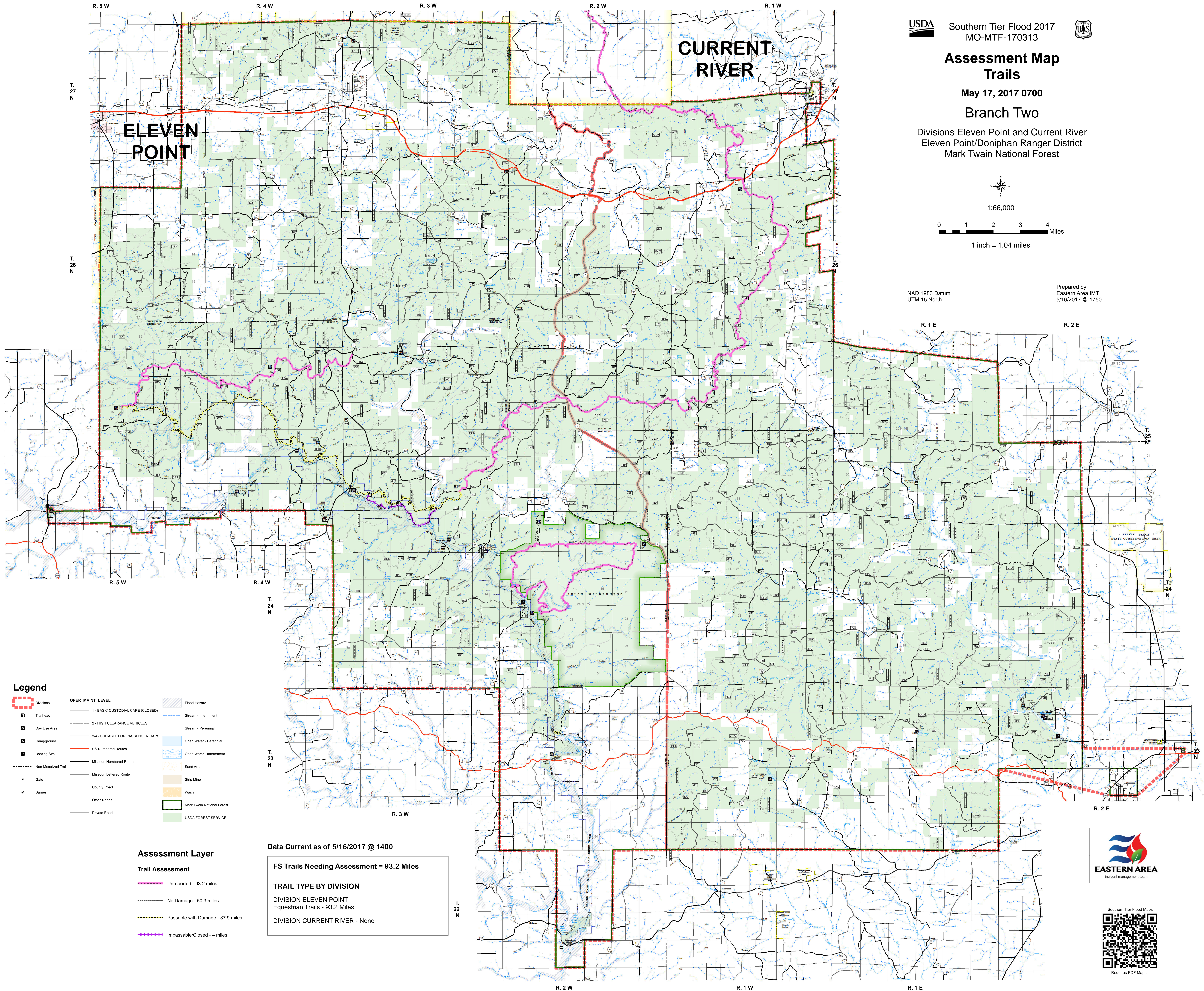
1:66,000



1 inch = 1.04 miles

NAD 1983 Datum
UTM 15 North

Prepared by:
Eastern Area IMT
5/16/2017 @ 1750



Legend

- Divisions
- Trailhead
- Day Use Area
- Campground
- Boating Site
- Non-Motorized Trail
- Gate
- Barrier
- OPER. MAINT. LEVEL**
 - 1 - BASIC CUSTODIAL CARE (CLOSED)
 - 2 - HIGH CLEARANCE VEHICLES
 - 3/4 - SUITABLE FOR PASSENGER CARS
 - US Numbered Routes
 - Missouri Numbered Routes
 - Missouri Lettered Route
 - County Road
 - Other Roads
 - Private Road
- Flood Hazard
- Stream - Intermittent
- Stream - Perennial
- Open Water - Perennial
- Open Water - Intermittent
- Sand Area
- Strip Mine
- Wash
- Mark Twain National Forest
- USDA FOREST SERVICE

Assessment Layer

Trail Assessment

- Unreported - 93.2 miles
- No Damage - 50.3 miles
- Passable with Damage - 37.9 miles
- Impassable/Closed - 4 miles

Data Current as of 5/16/2017 @ 1400

FS Trails Needing Assessment = 93.2 Miles

TRAIL TYPE BY DIVISION

DIVISION ELEVEN POINT
Equestrian Trails - 93.2 Miles
DIVISION CURRENT RIVER - None



Requires PDF Maps