

R. 20 W

R. 19 W

R. 18 W



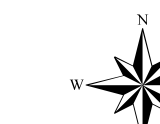
Southern Tier Flood 2017
MO-MTF-170313



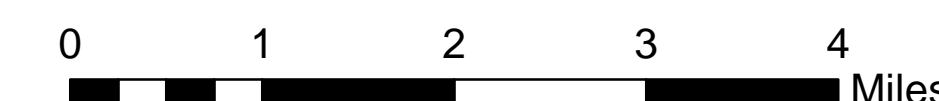
Assessment Map Roads & Recreation Sites

May 18, 2017 0700

Branch One
Division Zone 3
Ava Ranger District
Mark Twain National Forest



1:63,360



1 inch = 1 miles

NAD 1983 Datum
UTM 15 North

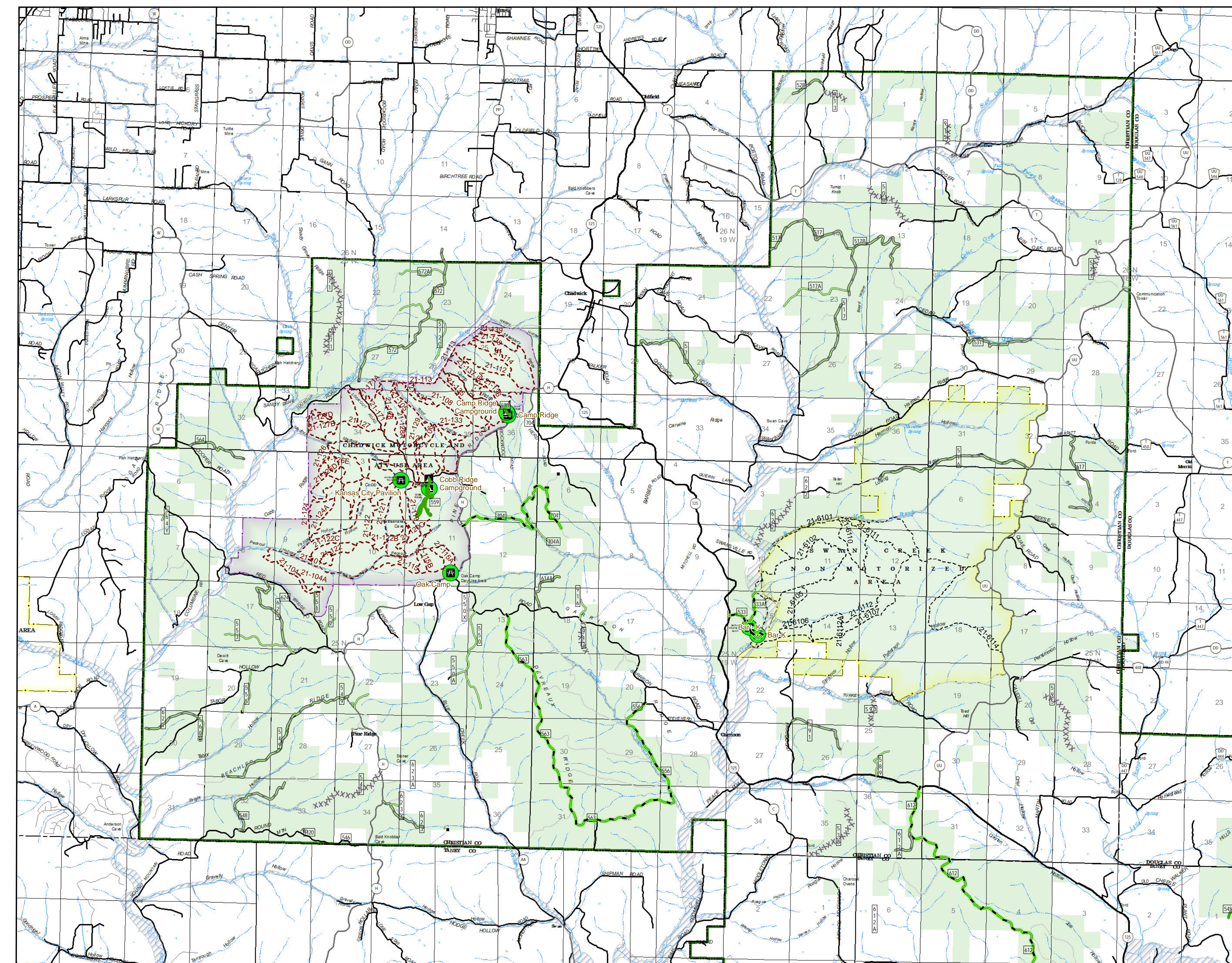
Prepared by:
Eastern Area IMT
5/17/2017 @ 1754

Legend

- Trailhead (3)
 - Observation Site (4)
 - Info Site/Fee Station (1)
 - Day Use Area (9)
 - Campground (5)
 - Non-Motorized Trail
 - Motorized Trail
 - Gate (37)
 - Barrier (1)
- OPER. MAINT. LEVEL**
- 1 - BASIC CUSTODIAL CARE (CLOSED)
 - 2 - HIGH CLEARANCE VEHICLES
 - 3/4 - SUITABLE FOR PASSENGER CARS
 - US Numbered Routes
 - Missouri Numbered Routes
 - Missouri Lettered Route
 - County Road
 - Other Roads
 - Private Road
- Flood Hazard
 - Channel in Water Area
 - Stream - Intermittent
 - Stream - Perennial
 - Land Subject to Inundation
 - Open Water - Perennial
 - Open Water - Intermittent
 - Mark Twain National Forest
 - USDA Forest Service
- Pit
 - Sand Area
 - National Wilderness Area
 - State/County Special Area
 - FS Spec Mgt/Rec Area

T. 26 N

T. 25 N



R. 17 W

R. 16 W

R. 15 W

T. 24 N

T. 23 N

T. 22 N

Data Current as of 5/17/2017 @ 1515

FS Roads, Zone 3 Ava RD
Needing Assessment = 0 Miles

OPERATIONAL MAINTENANCE LEVEL

- 3 - Suitable for Passenger Cars - 0 Miles
- 4 - Moderate Degree of User Comfort - 0 Miles

FS Recreation Sites, Zone 3 Ava RD
Needing Assessment = 0 Sites

Assessment Layers

- OML 2 Road Assessment**
- No Damage - 33.8 miles
 - Passable with Damage - 64.7 miles
 - Impassible/Closed - 54.6 miles
- OML 3 & 4 Road Assessment**
- Unreported - 0 miles
 - No Damage - 4.7 miles
 - Passable with Damage - 57.9 miles
 - Impassible/Closed - 1.5 miles
- Rec Site Assessment**
- Unreported (0)
 - No Damage (26)
 - Open/minor damage (0)
 - Closed/significant damage (0)



Requires PDF Maps