

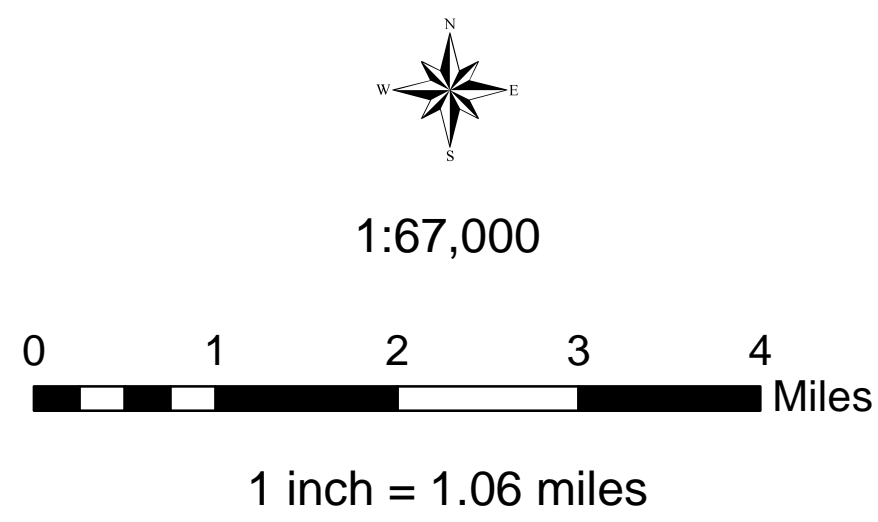


USDA Southern Tier Flood 2017 MO-MTF-170313

**Assessment Map
Roads & Recreation Sites**

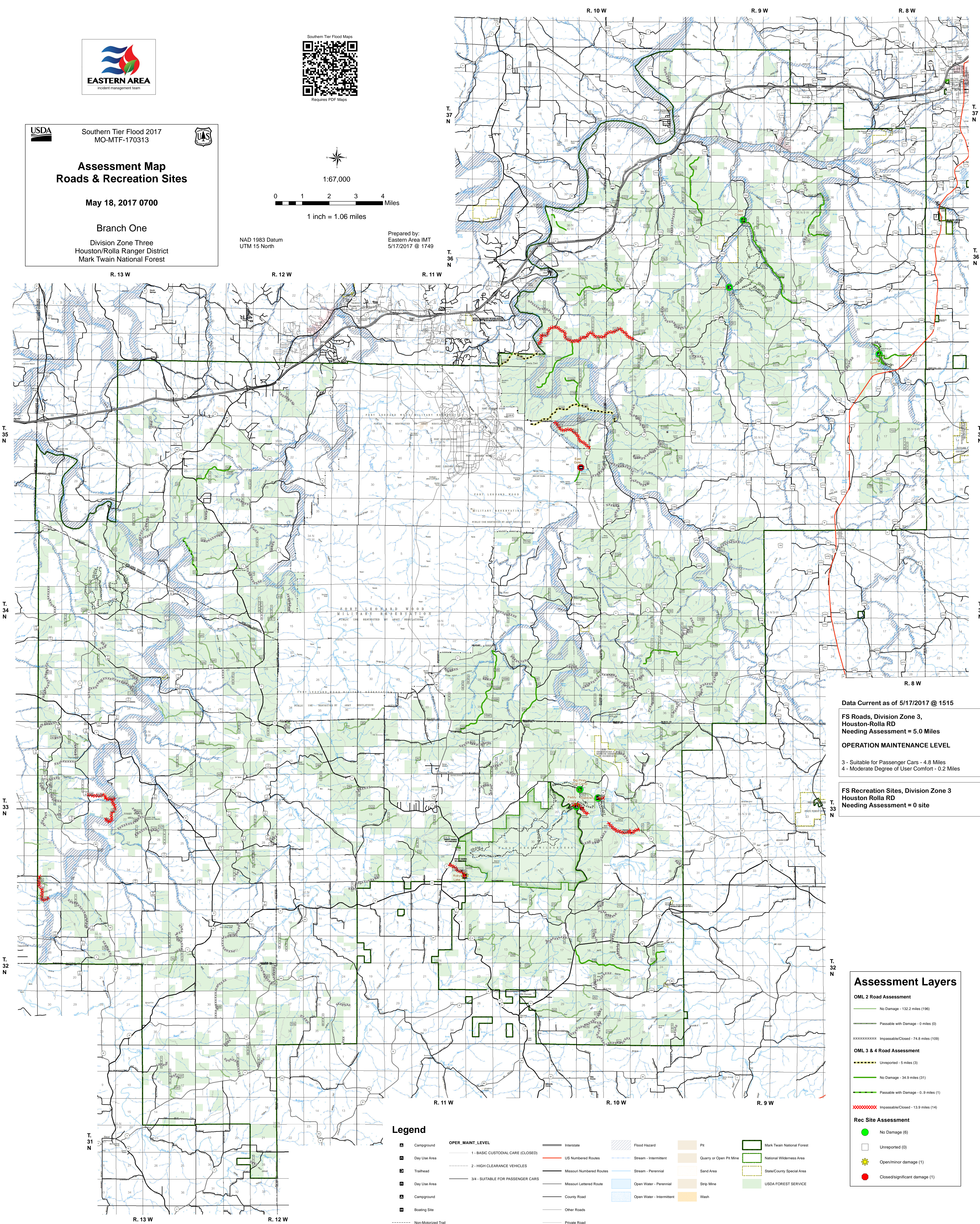
May 18, 2017 0700

Branch One
Division Zone Three
Houston/Rolla Ranger District
Mark Twain National Forest



NAD 1983 Datum
UTM 15 North

Prepared by:
Eastern Area IMT
5/17/2017 @ 1749



Data Current as of 5/17/2017 @ 1515

**FS Roads, Division Zone 3,
Houston-Rolla RD**
Needing Assessment = 5.0 Miles

OPERATION MAINTENANCE LEVEL

- 3 - Suitable for Passenger Cars - 4.8 Miles
- 4 - Moderate Degree of User Comfort - 0.2 Miles

**FS Recreation Sites, Division Zone 3
Houston Rolla RD**
Needing Assessment = 0 site

Assessment Layers

OML 2 Road Assessment

- No Damage - 132.2 miles (196)
- Passable with Damage - 0 miles (0)
- XXXXXXXXXX Impassable/Closed - 74.8 miles (109)

OML 3 & 4 Road Assessment

- Unreported - 5 miles (3)
- No Damage - 34.9 miles (31)
- Passable with Damage - 0.9 miles (1)
- XXXXXXXXXX Impassable/Closed - 13.9 miles (14)

Rec Site Assessment

- No Damage (6)
- Unreported (0)
- Open/Minor damage (1)
- Closed/significant damage (1)

Legend

- | | | | | | |
|---------------------|-----------------------------------|--------------------------|---------------------------|-------------------------|----------------------------|
| Campground | OPER_MAINT_LEVEL | Interstate | Flood Hazard | Pit | Mark Twain National Forest |
| Day Use Area | 1 - BASIC CUSTODIAL CARE (CLOSED) | US Numbered Routes | Stream - Intermittent | Quarry or Open Pit Mine | National Wilderness Area |
| Trailhead | 2 - HIGH CLEARANCE VEHICLES | Missouri Numbered Routes | Stream - Perennial | Sand Area | State/County Special Area |
| Day Use Area | 3/4 - SUITABLE FOR PASSENGER CARS | Missouri Lettered Routes | Open Water - Perennial | Strip Mine | USDA FOREST SERVICE |
| Campground | County Road | Other Roads | Open Water - Intermittent | Wash | |
| Boasting Site | Private Road | Railroad | | | |
| Non-Motorized Trail | | | | | |
| Gate | | | | | |
| Barrier | | | | | |