

R 12 W

R 11 W

R 10 W

R 9 W

T 27 N

T 27 N

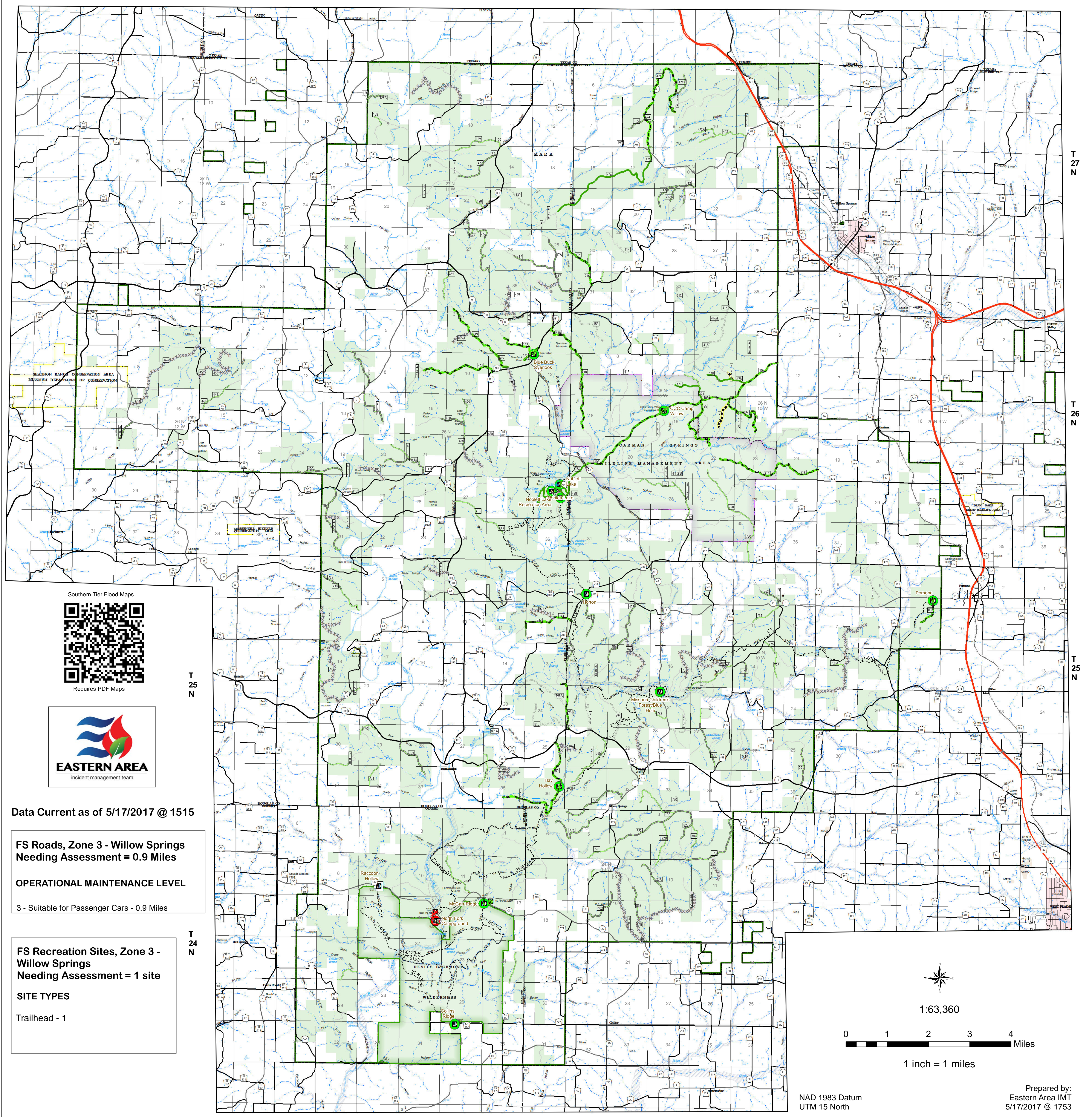
T 26 N

T 26 N

T 25 N

T 25 N

T 24 N



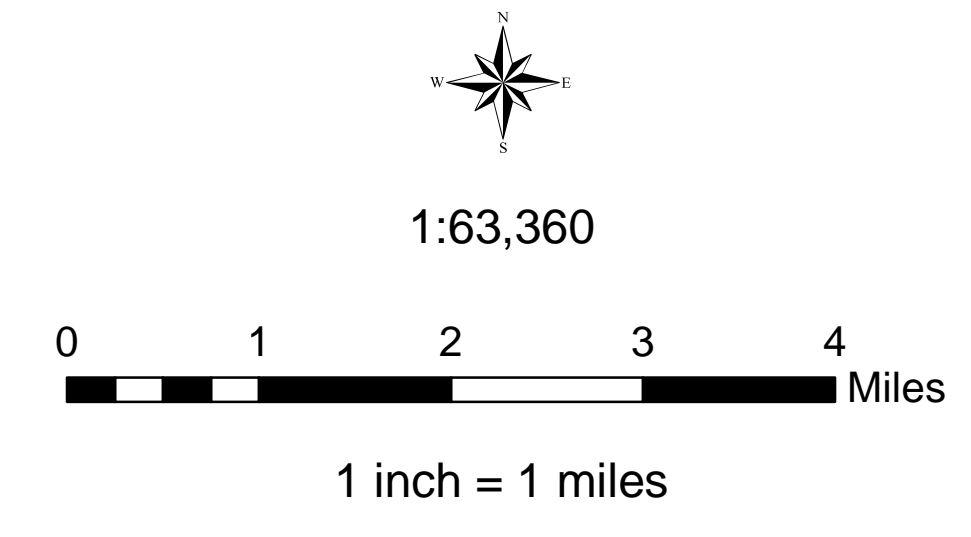
Data Current as of 5/17/2017 @ 1515

**FS Roads, Zone 3 - Willow Springs
Needing Assessment = 0.9 Miles**

OPERATIONAL MAINTENANCE LEVEL
3 - Suitable for Passenger Cars - 0.9 Miles

**FS Recreation Sites, Zone 3 -
Willow Springs
Needing Assessment = 1 site**

SITE TYPES
Trailhead - 1



NAD 1983 Datum
UTM 15 North

Prepared by:
Eastern Area IMT
5/17/2017 @ 1753

USDA Southern Tier Flood 2017 MO-MTF-170313

**Assessment Map
Roads & Recreation Sites**
May 18, 2017 0700

Branch One

Division Zone 3
Willow Springs Ranger District
Mark Twain National Forest

Assessment Layers		Rec Site Assessment
OML 2 Road Assessment	OML 3 & 4 Road Assessment	Unreported (1)
— No Damage - 31.3 miles	— Unreported - 0.9 miles	— No Damage (11)
— Passable with Damage - 38.9 miles	— No Damage - 8.8 miles	— Open/minor damage (0)
XXXXXXXXXX Impassible/Closed - 32.1 miles	— Passable with Damage - 32.2 miles	— Closed/significant damage (1)
	XXXXXXXXXX Impassible/Closed - 0.6 miles	

Legend	
■ Campground (2)	— Non-Motorized Trail
■ Trailhead (9)	■ Gate (31)
■ Observation Site (1)	● Barrier (5)
■ Interpretive Site (Minor) (1)	— OPER_MAINT_LEVEL
■ Day Use Area (1)	1 - BASIC CUSTODIAL CARE (CLOSED)
■ Campground (1)	2 - HIGH CLEARANCE VEHICLES
	3/4 - SUITABLE FOR PASSENGER CARS
— US Numbered Routes	— Missouri Numbered Routes
— Missouri Lettered Route	— County Road
— Other Roads	— Private Road
— Railroad	— Flood Hazard
— Stream - Intermittent	— Stream - Perennial
— Waterfall	— Open Water - Perennial
— Open Water - Intermittent	— Open Water - Intermittent
— Quarry or Open Pit Mine	— Sand Area
— Strip Mine	— Mark Twain National Forest
— National Wilderness Area	— State/County Special Area
— FS Spec Mgt/Rec Area	— USDA Forest Service