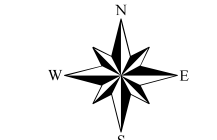


# Assessment Map Roads & Recreation Sites

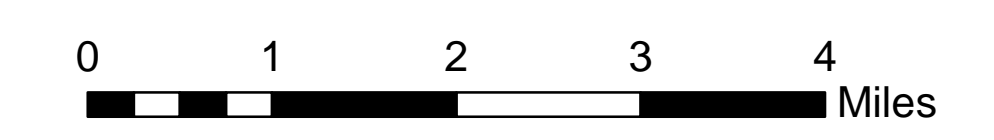
May 19, 2017 0700

Branch Two

Divisions Eleven Point and Current River  
Eleven Point/Doniphan Ranger District  
Mark Twain National Forest



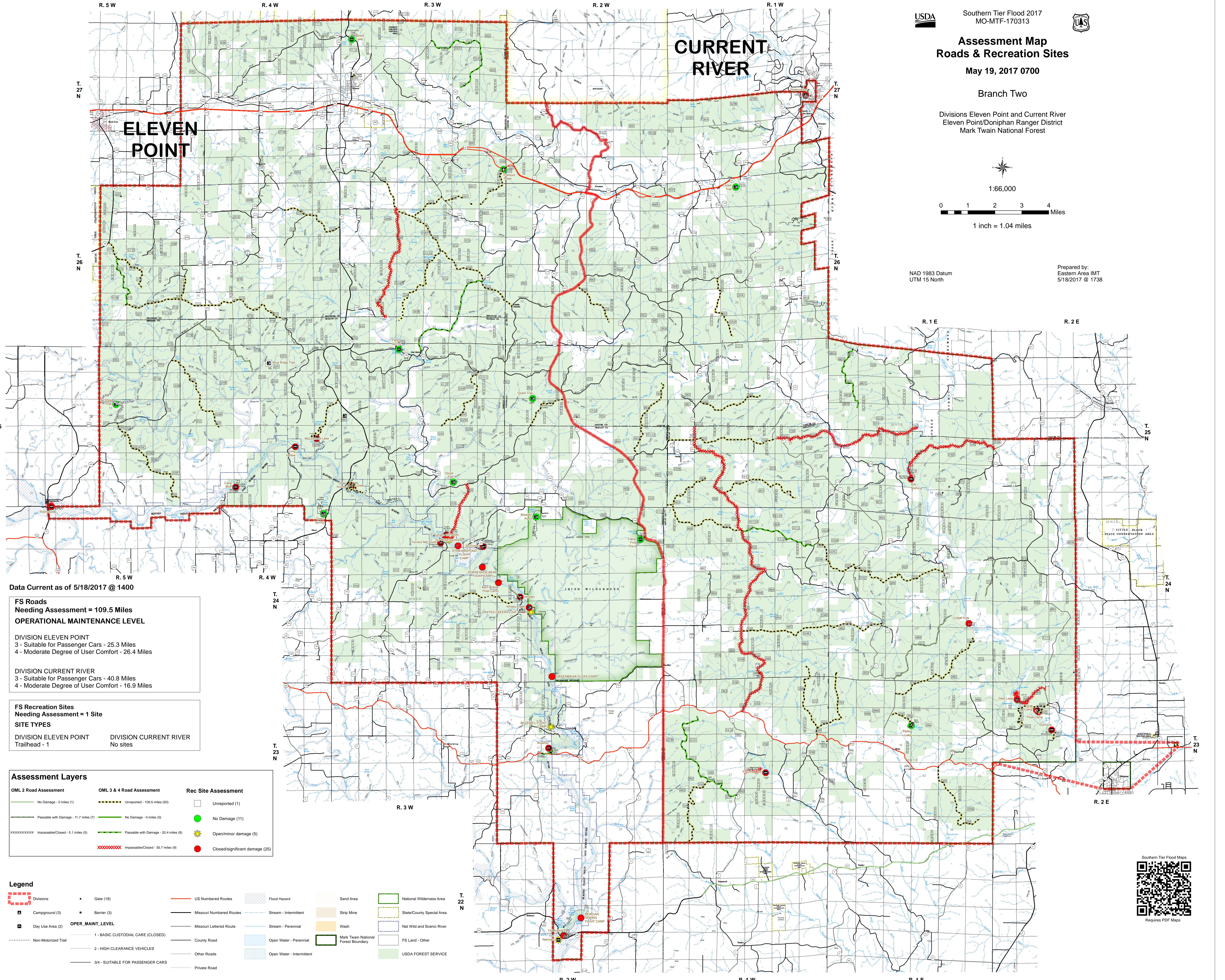
1:66,000



1 inch = 1.04 miles

NAD 1983 Datum  
UTM 15 North

Prepared by:  
Eastern Area IMT  
5/18/2017 @ 1738



Data Current as of 5/18/2017 @ 1400

**FS Roads  
Needing Assessment = 109.5 Miles  
OPERATIONAL MAINTENANCE LEVEL**

**DIVISION ELEVEN POINT**  
3 - Suitable for Passenger Cars - 25.3 Miles  
4 - Moderate Degree of User Comfort - 26.4 Miles

**DIVISION CURRENT RIVER**  
3 - Suitable for Passenger Cars - 40.8 Miles  
4 - Moderate Degree of User Comfort - 16.9 Miles

**FS Recreation Sites  
Needing Assessment = 1 Site  
SITE TYPES**

**DIVISION ELEVEN POINT**  
Trailhead - 1

**DIVISION CURRENT RIVER**  
No sites

**Assessment Layers**

OML 2 Road Assessment	OML 3 & 4 Road Assessment	Rec Site Assessment
No Damage - 0 miles (1)	Unreported - 109.5 miles (50)	Unreported (1)
Passable with Damage - 11.7 miles (7)	No Damage - 0 miles (0)	No Damage (11)
Impassible/Closed - 5.1 miles (5)	Passable with Damage - 20.4 miles (8)	Open/minor damage (5)
Impassible/Closed - 35.7 miles (9)	Impassible/Closed - 35.7 miles (9)	Closed/significant damage (25)

**Legend**

Divisions	Gate (18)	US Numbered Routes	Flood Hazard	Sand Area	National Wilderness Area
Campground (3)	Barrier (3)	Missouri Numbered Routes	Stream - Intermittent	Strip Mine	State/County Special Area
Day Use Area (2)	<b>OPER_MAINT_LEVEL</b>	Missouri Lettered Route	Stream - Perennial	Wash	Nat Wild and Scenic River
Non-Motorized Trail	1 - BASIC CUSTODIAL CARE (CLOSED)	County Road	Open Water - Perennial	Mark Twain National Forest Boundary	FS Land - Other
	2 - HIGH CLEARANCE VEHICLES	Other Roads	Open Water - Intermittent	USDA FOREST SERVICE	
	3/4 - SUITABLE FOR PASSENGER CARS	Private Road			



Requires PDF Maps