



Southern Tier Flood 2017
MO-MTF-170313



Assessment Map Trails

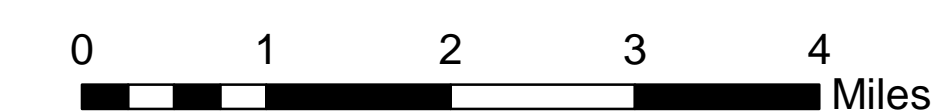
May 19, 2017 0700

Branch Two

Divisions Eleven Point and Current River
Eleven Point/Doniphan Ranger District
Mark Twain National Forest



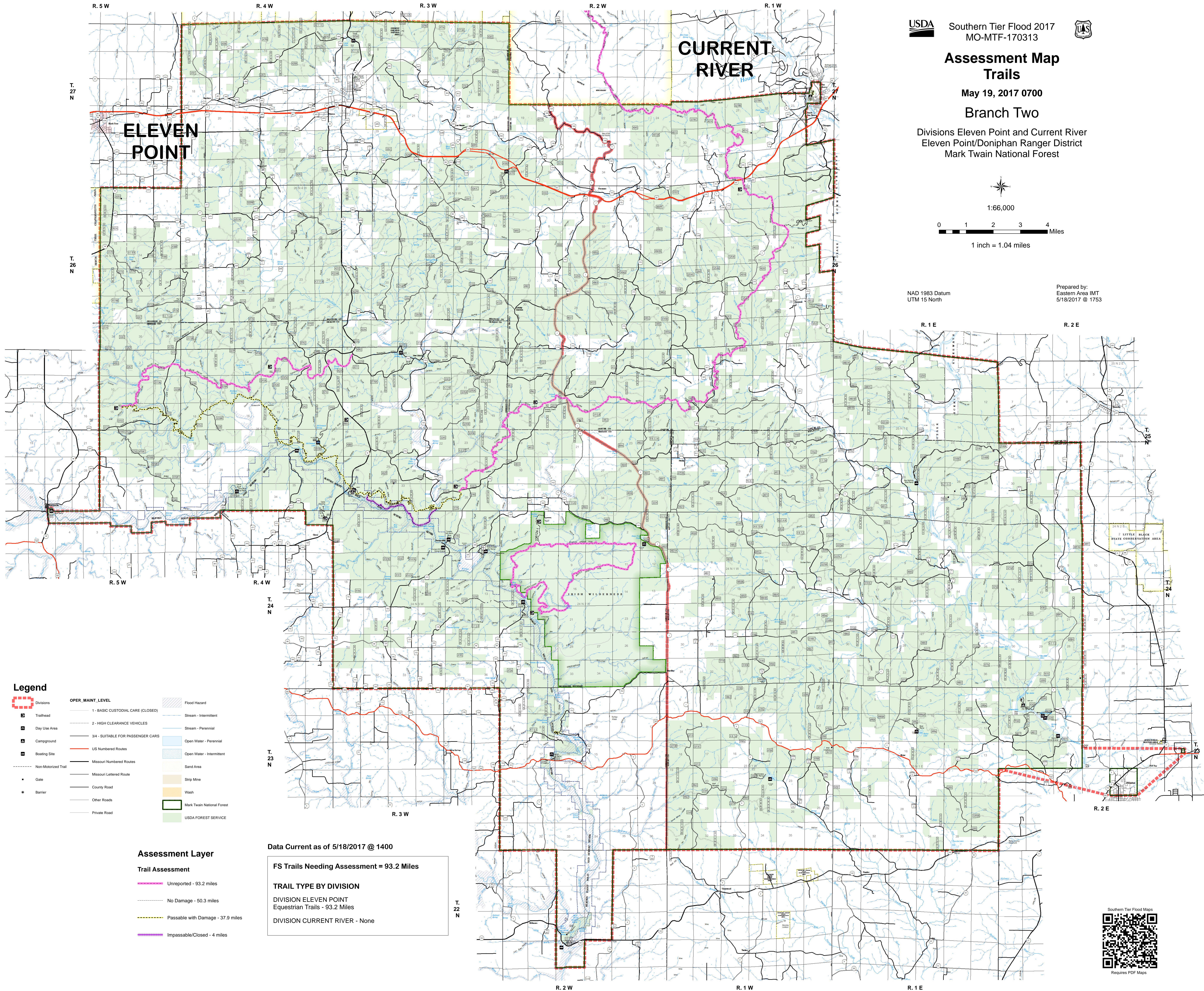
1:66,000



1 inch = 1.04 miles

NAD 1983 Datum
UTM 15 North

Prepared by:
Eastern Area IMT
5/18/2017 @ 1753



Legend

- Divisions
 - Trailhead
 - Day Use Area
 - Compground
 - Boating Site
 - Non-Motorized Trail
 - Gate
 - Barrier
- | OPER. MAINT. LEVEL | |
|-----------------------------------|----------------------------|
| 1 - BASIC CUSTODIAL CARE (CLOSED) | Flood Hazard |
| 2 - HIGH CLEARANCE VEHICLES | Stream - Intermittent |
| 3/4 - SUITABLE FOR PASSENGER CARS | Stream - Perennial |
| US Numbered Routes | Open Water - Perennial |
| Missouri Numbered Routes | Open Water - Intermittent |
| Missouri Lettered Route | Sand Area |
| County Road | Strip Mine |
| Other Roads | Wash |
| Private Road | Mark Twain National Forest |
| | USDA FOREST SERVICE |

Assessment Layer

Trail Assessment

- Unreported - 93.2 miles
- No Damage - 50.3 miles
- Passable with Damage - 37.9 miles
- Impassable/Closed - 4 miles

Data Current as of 5/18/2017 @ 1400

FS Trails Needing Assessment = 93.2 Miles

TRAIL TYPE BY DIVISION

DIVISION ELEVEN POINT
Equestrian Trails - 93.2 Miles

DIVISION CURRENT RIVER - None



Requires PDF Maps