

R 12 W

R 11 W

R 10 W

R 9 W

T 27 N

T 27 N

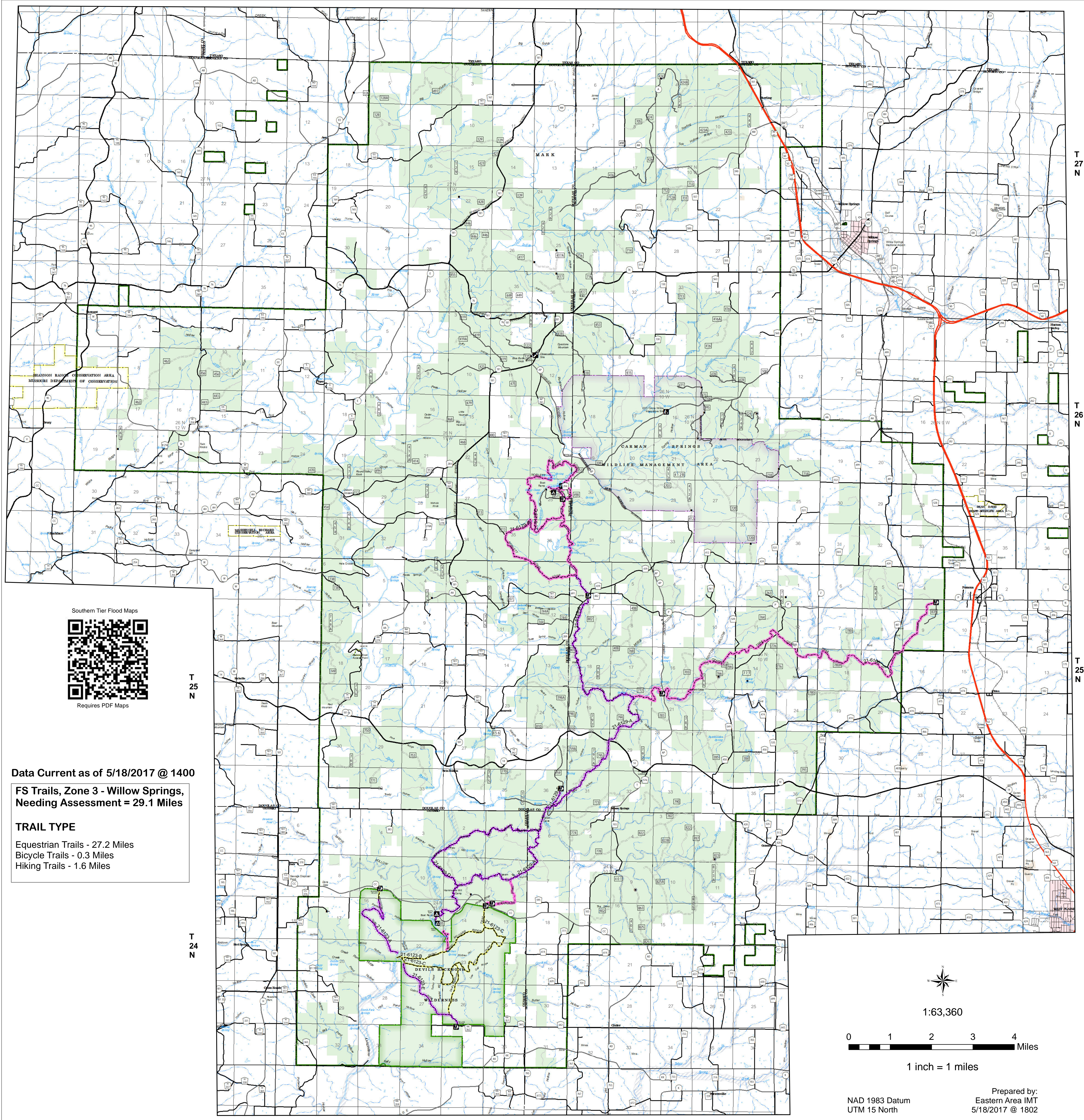
T 26 N

T 26 N

T 25 N

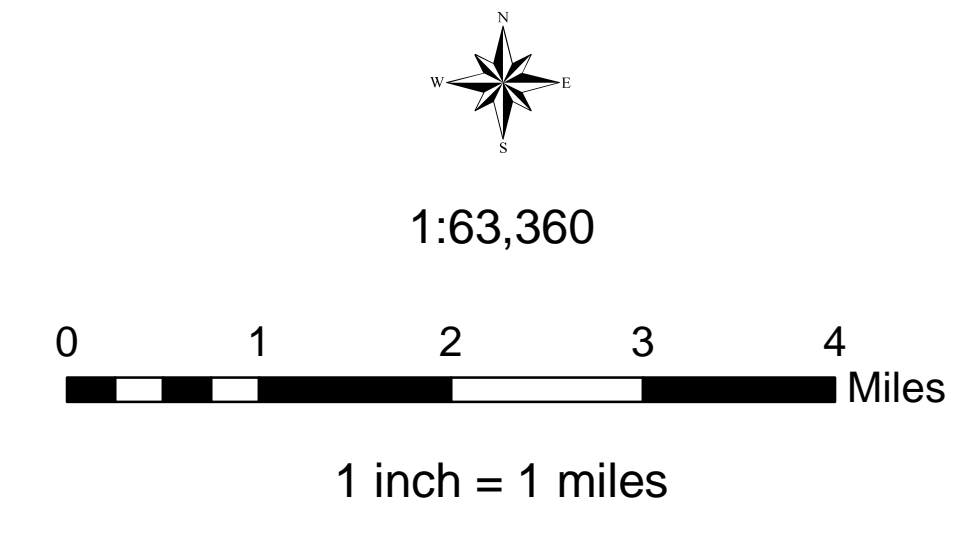
T 25 N

T 24 N



Data Current as of 5/18/2017 @ 1400
FS Trails, Zone 3 - Willow Springs, Needing Assessment = 29.1 Miles

TRAIL TYPE
 Equestrian Trails - 27.2 Miles
 Bicycle Trails - 0.3 Miles
 Hiking Trails - 1.6 Miles



Prepared by:
 Eastern Area IMT
 5/18/2017 @ 1802

USDA Southern Tier Flood 2017 MO-MTF-170313 UAS

Assessment Map Trails

May 19, 2017 0700

Branch One
 Division Zone 3
 Willow Springs Ranger District
 Mark Twain National Forest

Assessment Layers

| |
|-----------------------------------|
| Unreported - 29.1 miles |
| No Damage - 0 miles |
| Passable with Damage - 10.1 miles |
| Impassable/Closed - 26.5 miles |

Legend

| | | | | | |
|-------------------------------|-----------------------------------|--------------------------|---------------------------|-------------------------|----------------------------|
| Campground (2) | Non-Motorized Trail | US Numbered Routes | Flood Hazard | Quarry or Open Pit Mine | Mark Twain National Forest |
| Trailhead (9) | Gate (31) | Missouri Numbered Routes | Stream - Intermittent | Sand Area | National Wilderness Area |
| Observation Site (1) | Barrier (5) | Missouri Lettered Route | Stream - Perennial | Strip Mine | State/County Special Area |
| Interpretive Site (Minor) (1) | OPER. MAINT. LEVEL | County Road | Waterfall | Open Water - Perennial | FS Spec Mgt/Rec Area |
| Day Use Area (1) | 1 - BASIC CUSTODIAL CARE (CLOSED) | Other Roads | Open Water - Intermittent | USDA Forest Service | |
| Campground (1) | 2 - HIGH CLEARANCE VEHICLES | Private Road | | | |
| | 3/4 - SUITABLE FOR PASSENGER CARS | Railroad | | | |