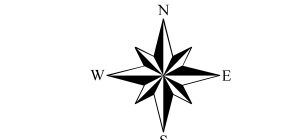


Assessment Map Roads & Recreation Sites

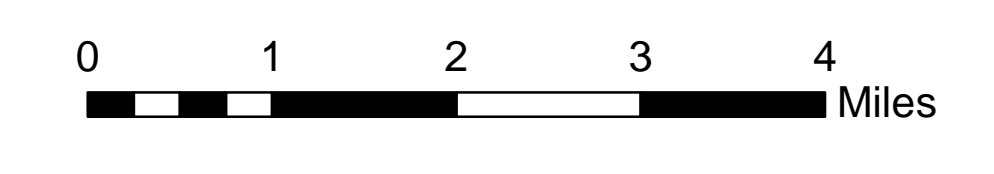
May 20, 2017 0700

Branch Two

Divisions Eleven Point and Current River
Eleven Point/Doniphan Ranger District
Mark Twain National Forest



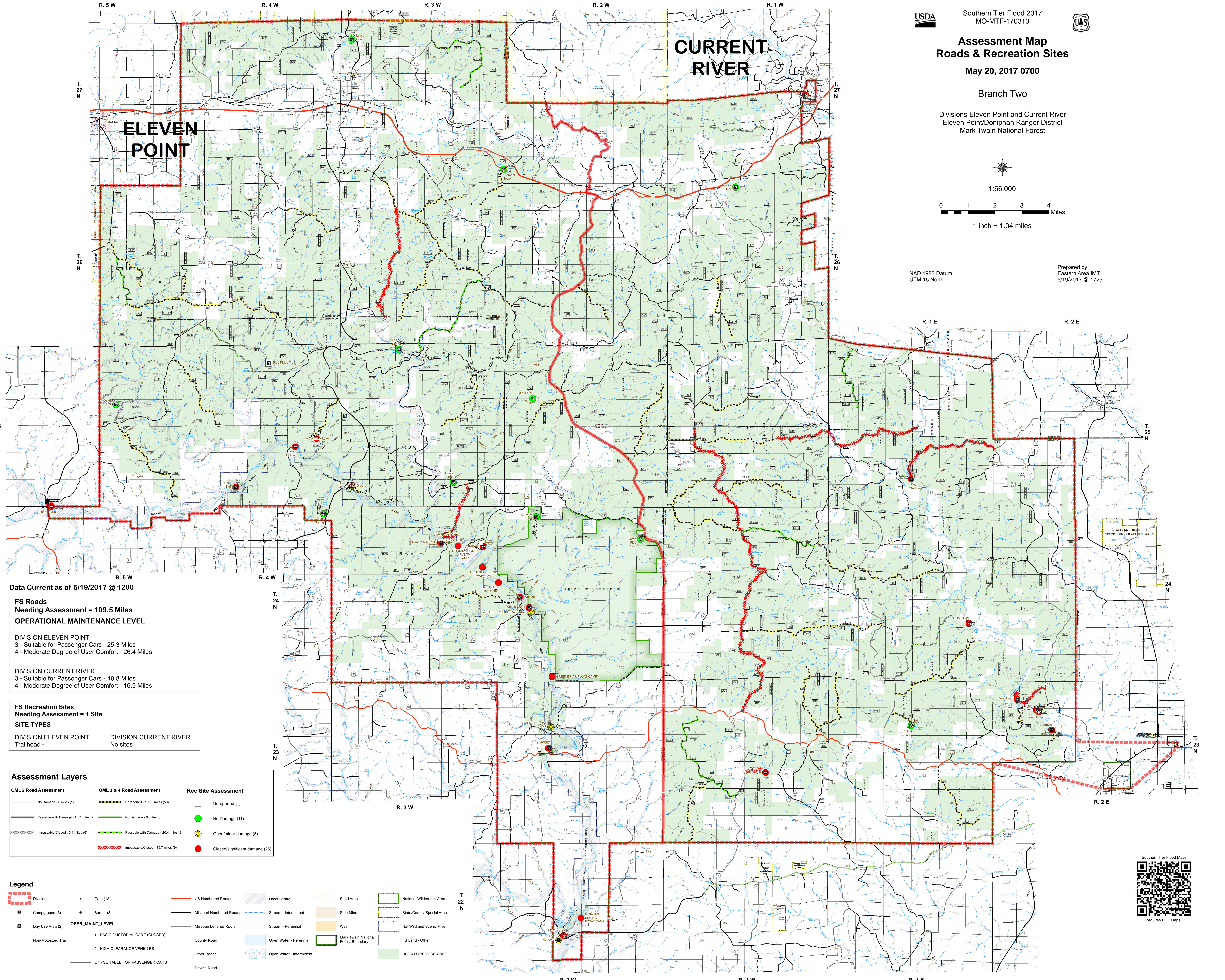
1:66,000



1 inch = 1.04 miles

NAD 1983 Datum
UTM 15 North

Prepared by:
Eastern Area IMT
5/19/2017 @ 1725



Data Current as of 5/19/2017 @ 1200

**FS Roads
Needing Assessment = 109.5 Miles
OPERATIONAL MAINTENANCE LEVEL**

DIVISION ELEVEN POINT
3 - Suitable for Passenger Cars - 25.3 Miles
4 - Moderate Degree of User Comfort - 26.4 Miles
DIVISION CURRENT RIVER
3 - Suitable for Passenger Cars - 40.8 Miles
4 - Moderate Degree of User Comfort - 16.9 Miles

**FS Recreation Sites
Needing Assessment = 1 Site
SITE TYPES**

DIVISION ELEVEN POINT	DIVISION CURRENT RIVER
Trailhead - 1	No sites

Assessment Layers

OML 2 Road Assessment	OML 3 & 4 Road Assessment	Rec Site Assessment
<ul style="list-style-type: none"> No Damage - 0 miles (1) Passable with Damage - 11.7 miles (7) Impassable/Closed - 5.1 miles (5) 	<ul style="list-style-type: none"> Unreported - 109.5 miles (50) No Damage - 0 miles (0) Passable with Damage - 20.4 miles (8) Impassable/Closed - 35.7 miles (9) 	<ul style="list-style-type: none"> Unreported (1) No Damage (11) Open/minor damage (5) Closed/significant damage (25)

Legend

<ul style="list-style-type: none"> Divisions Campground (3) Day Use Area (2) Non-Motorized Trail Gate (18) Barrier (3) OPER_MAINT_LEVEL 1 - BASIC CUSTODIAL CARE (CLOSED) 2 - HIGH CLEARANCE VEHICLES 3/4 - SUITABLE FOR PASSENGER CARS 	<ul style="list-style-type: none"> US Numbered Routes Missouri Numbered Routes Missouri Lettered Route County Road Other Roads Private Road Flood Hazard Stream - Intermittent Stream - Perennial Open Water - Perennial Open Water - Intermittent Sand Area Strip Mine Wash Mark Twain National Forest Boundary 	<ul style="list-style-type: none"> National Wilderness Area State/County Special Area Nat Wild and Scenic River FS Land - Other USDA FOREST SERVICE
---	---	--



Requires PDF Maps