


 Southern Tier Flood 2017
 MO-MTF-170313



Assessment Map

Roads & Recreation Sites

May 20, 2017 0700
 Branch One
 Division Zone 1
 Fredericktown Ranger District
 Mark Twain National Forest

Data Current as of 5/19/2017 @ 1200

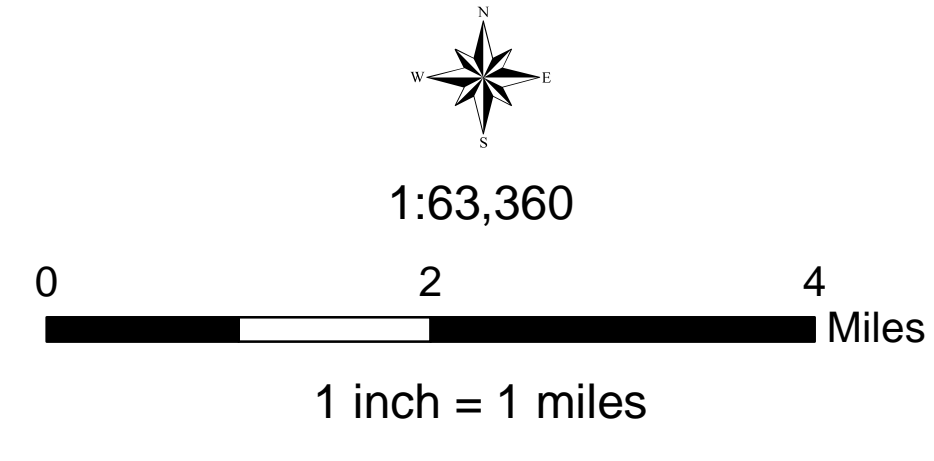
FS Roads, Zone 1 - Fredericktown RD
 Needing Assessment = None

FS Recreation Sites, Zone 1 - Fredericktown RD
 Needing Assessment = 0 sites

SITE TYPES
 Trailhead - 1

Assessment Layers

OML 2 Road Assessment No Damage - 0.6 miles Passable with Damage - 3.3 miles Impossible/Closed - 0 miles	OML 3 & 4 Road Assessment Unreported - 0.0 miles No Damage - 12.7 miles Passable with Damage - 11.4 miles Impossible/Closed - 0 miles	Rec Site Assessment Unreported (1) No Damage (0) Open/minor damage (3) Closed/significant damage (0)
--	--	---

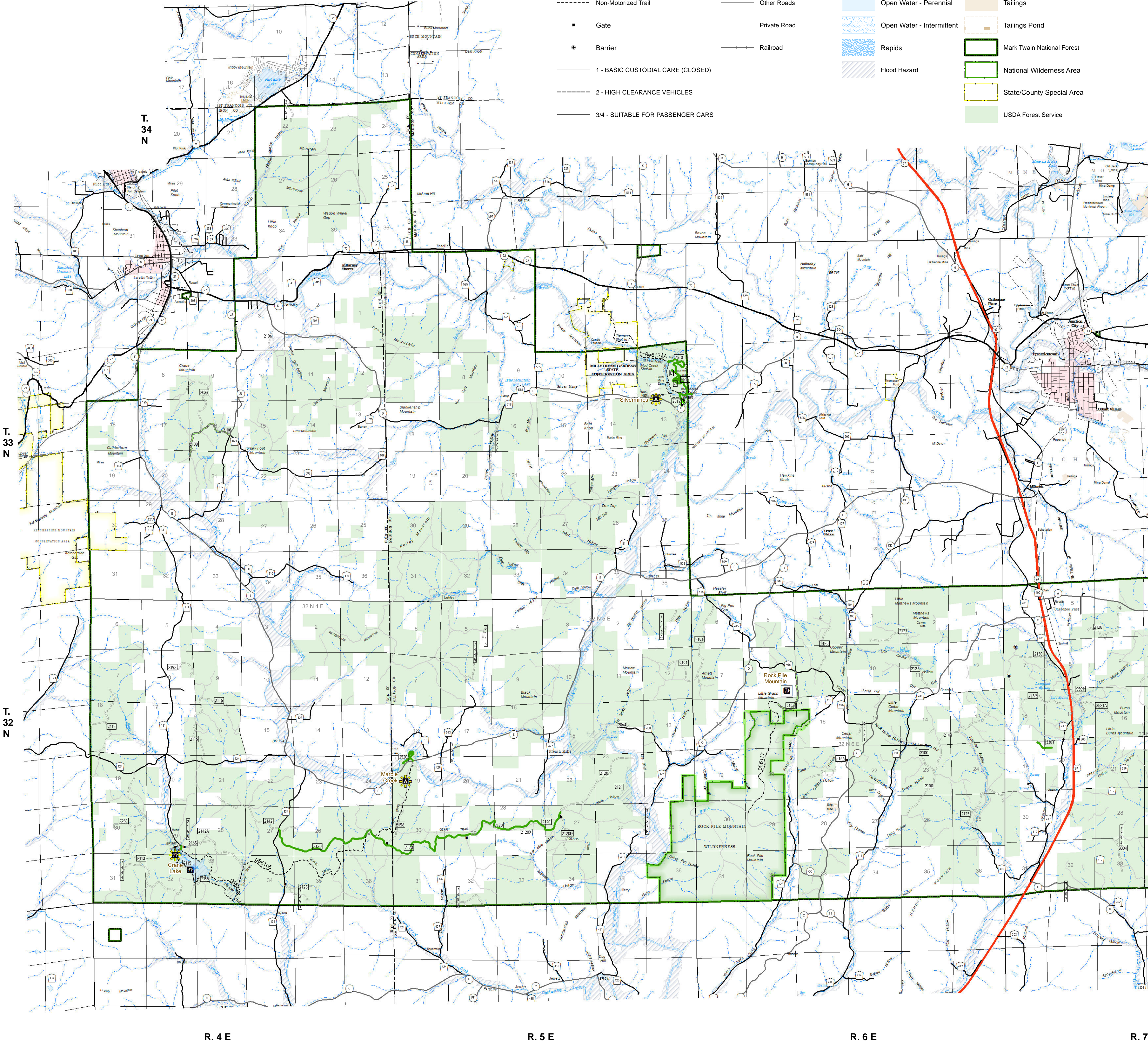
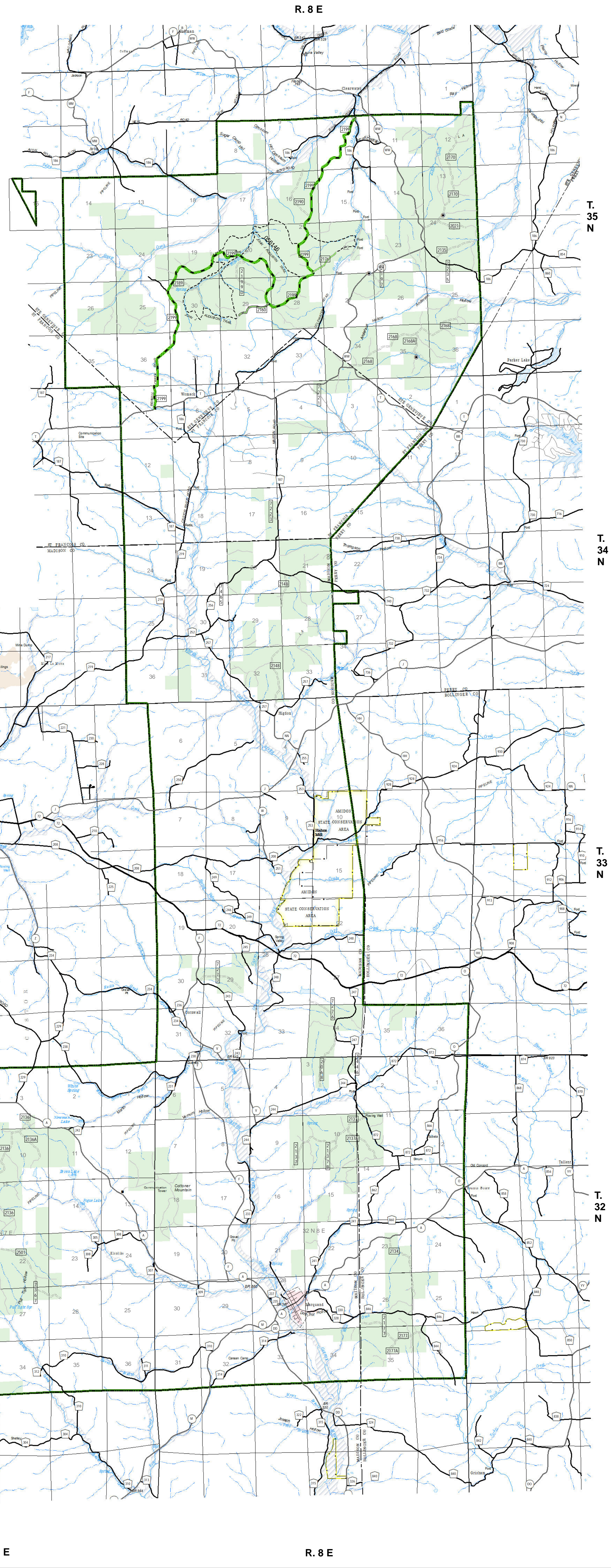


NAD 1983 Datum
UTM 15 North

Prepared by:
Eastern Area IMT
5/19/2017 @ 1724

Legend

- | | |
|--|---|
| <ul style="list-style-type: none"> Campground (2) Day Use Area (1) Trailhead (1) Day Use Area (1) Non-Motorized Trail Gate Barrier 1 - BASIC CUSTODIAL CARE (CLOSED) 2 - HIGH CLEARANCE VEHICLES 3/4 - SUITABLE FOR PASSENGER CARS | <ul style="list-style-type: none"> US Numbered Routes Missouri Numbered Routes Missouri Lettered Route County Road Other Roads Private Road Railroad Canal/Aque/Ditch Dam Carrying Road Stream - Intermittent Stream - Perennial Open Water - Perennial Open Water - Intermittent Rapids Flood Hazard Mine Dump Pit Sand Area Strip Mine Tailings Tailings Pond Mark Twain National Forest National Wilderness Area State/County Special Area USDA Forest Service |
|--|---|



R.4 E R.5 E R.6 E R.7 E R.8 E